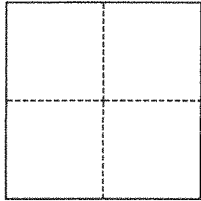


# CORNER RECORD

Agency Index BK 145 PG 13Document Number CR 15643City of HAYWARD County of ALAMEDA, CaliforniaBrief Legal Description MONUMENT AT ~ 263 WEST A ST**CORNER TYPE**

- ☐ Government Corner ☒ Control  
☐ Meander ☐ Property  
☐ Rancho ☐ Other

Date of Survey September 17, 2021**COORDINATES (Optional)**

N. \_\_\_\_\_ E. \_\_\_\_\_

Elevation \_\_\_\_\_

Units ☐ Metric ☒ U.S. Survey Foot

Horizontal Datum \_\_\_\_\_

Zone \_\_\_\_\_ Epoch Date \_\_\_\_\_

Vertical Datum \_\_\_\_\_

☐ Complies with Public Resources Code §§8801-8819☐ Complies with Public Resources Code §§8890-8902

PLS Act Ref.:

☐ 8765(d)☒ 8771☐ 8773☐ Other:Corner/  
Monument:☒ Left as found☐ Established☐ Rebuilt☒ Pre-Construction☐ Found and tagged☐ Reestablished☒ Referenced☐ Post-Construction

Narrative of corner identified and monument as found, set, reset, replaced, or removed:

☒ See sheet #2 for description(s):**SURVEYOR'S STATEMENT**

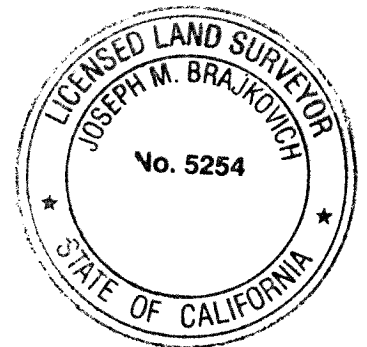
This Corner Record was prepared by me or under my direction in conformance with

the Professional Land Surveyors' Act on

Signed

Joseph M. Brajkovich 11-23-21

P.L.S. or R.C.E. No.

5254**COUNTY SURVEYOR'S STATEMENT**

This Corner Record was received

and examined and filed

JAN 12 2022

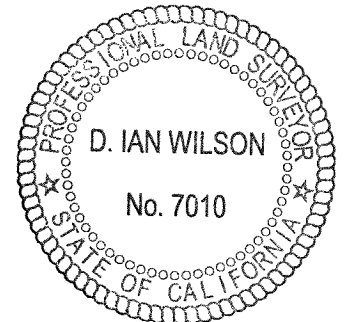
Signed

D. Ian Wilson

P.L.S. or R.C.E. No.

7010Title ALAMEDA COUNTY SURVEYOR

County Surveyor's Comment



LEGEND



#####

STREET ADDRESS

APN

ASSESSOR'S PARCEL NUMBER



FOUND SURVEY MONUMENT  
(PUNCH IN DISC IN WELL)

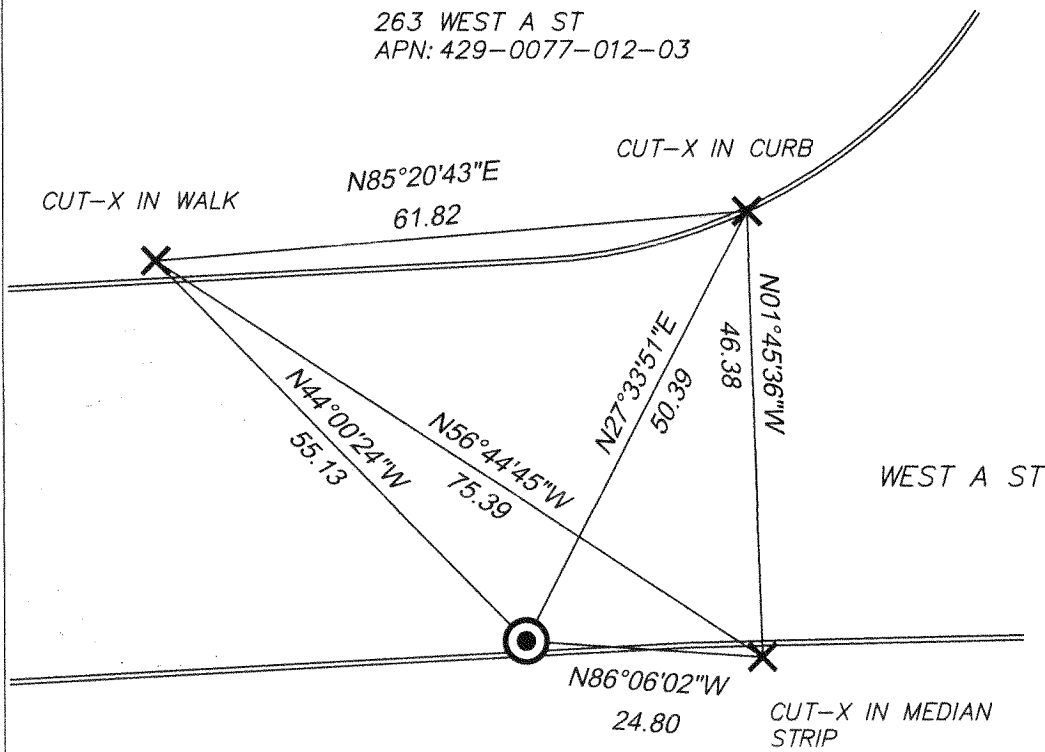


CUT CROSS SET IN CURB  
OR WALK AS DISPLAYED

SCALE: 1" = 20'

263 WEST A ST  
APN: 429-0077-012-03

HATHAWAY AVE



21-157 SHEET C-4