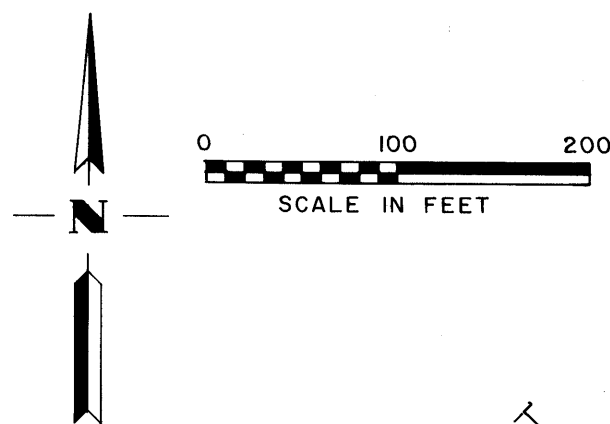


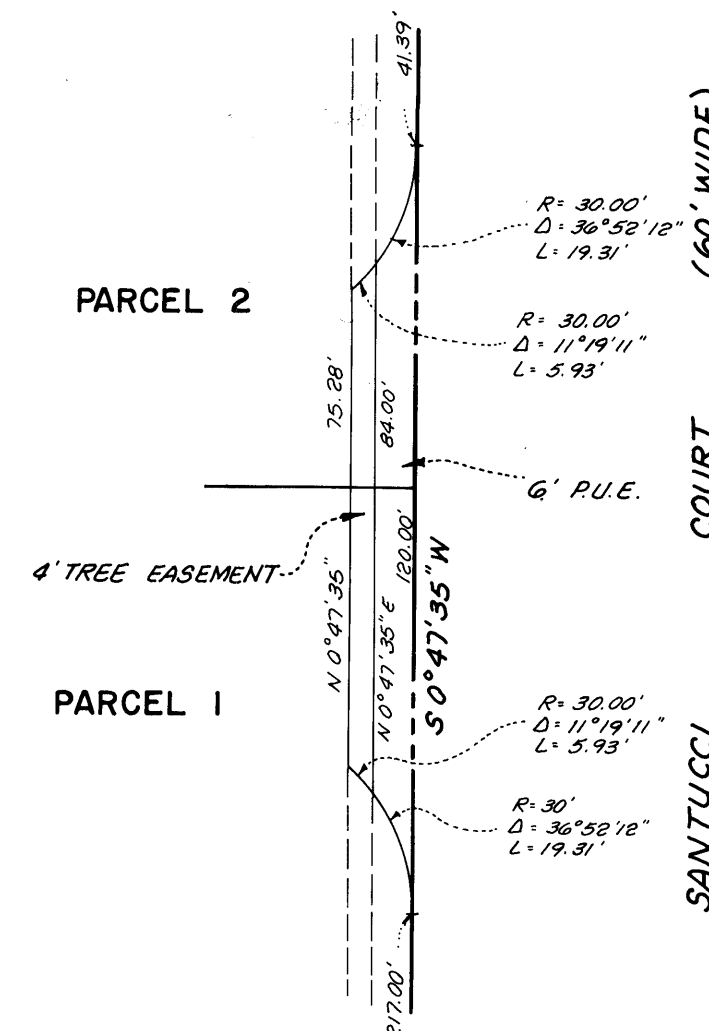
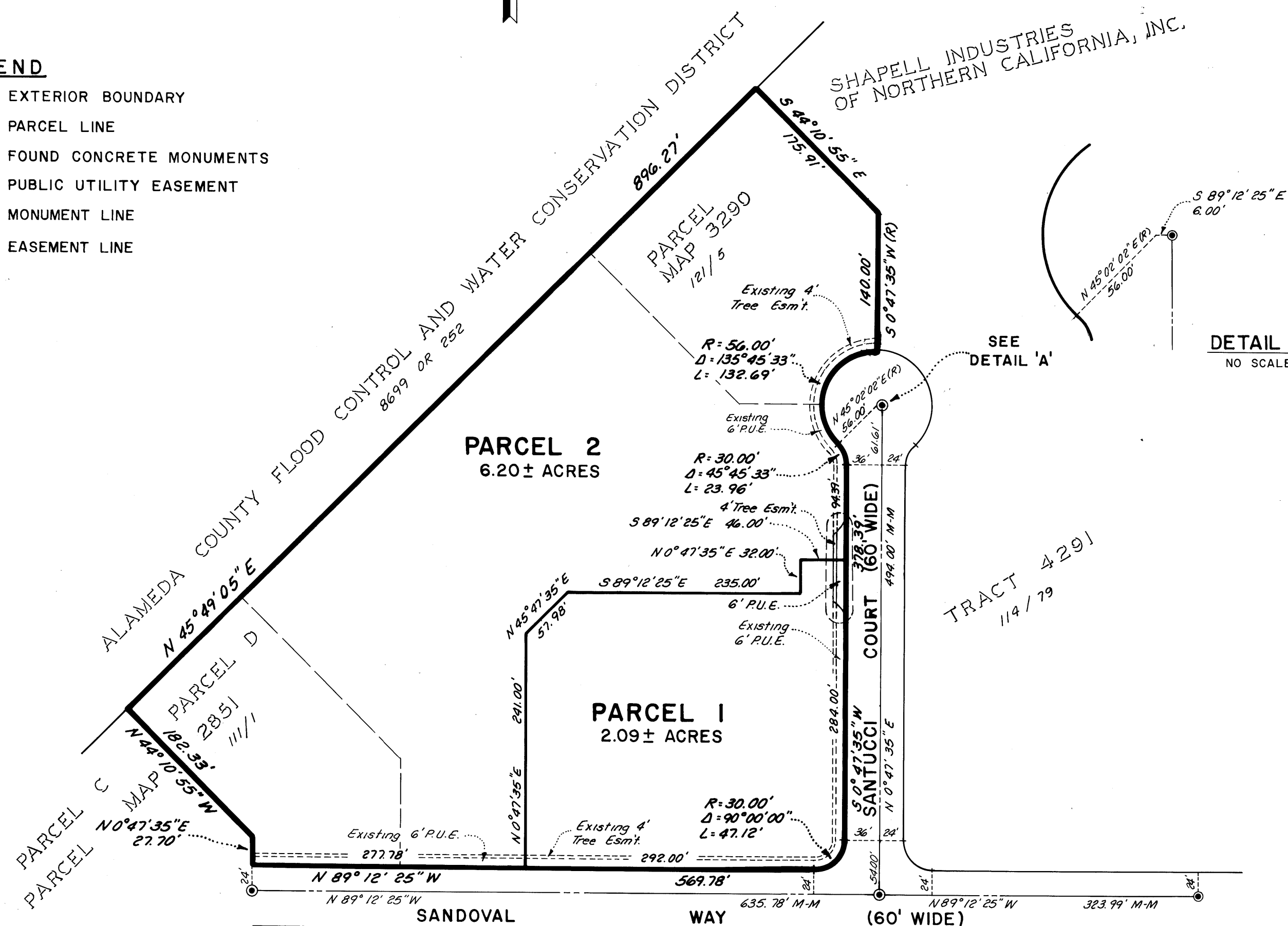
BASIS OF BEARINGS

THE LINE BETWEEN FOUND MONUMENTS
635.78' APART ON SANDOVAL WAY
TAKEN AS N 89°12' 25" W.



LEGEND

- EXTERIOR BOUNDARY
- PARCEL LINE
- FOUND CONCRETE MONUMENTS
- P.U.E. PUBLIC UTILITY EASEMENT
- MONUMENT LINE
- EASEMENT LINE



DETAIL 'B'
NO SCALE

NOTE

THIS PARCEL MAP WAS APPROVED BY THE CITY COUNCIL OF THE CITY OF HAYWARD ON AUGUST 7, 1984 BY RESOLUTION NO. 84-248 C.S. THEREBY VACATING THAT PORTION OF NASRIN COURT LYING WESTERLY OF THE WESTERN RIGHT-OF-WAY LINE OF SANTUCCI COURT PURSUANT TO SECTION 66499.20 1/2 OF THE SUBDIVISION MAP ACT.

★ USE WITH CAUTION ★
THIS IS A PUBLIC WORKS DEPARTMENT WORKING COPY OF AN OFFICIAL MAP ON FILE IN THE OFFICE OF THE COUNTY ENGINEER, COUNTY OF ALAMEDA. OF RECORD INFORMATION OR CALCULATIONS MAY HAVE BEEN ADDED HEREON.

PARCEL MAP NO. 4345

A RESUBDIVISION OF TRACT 4578, PARCEL MAP NO. 3290 AND A PORTION OF PARCEL MAP NO. 2851

CITY OF HAYWARD
ALAMEDA COUNTY, CALIFORNIA

BISSELL & KARN, INC.
CIVIL ENGINEERS
SAN LEANDRO, CALIFORNIA
JUNE, 1984
SCALE: 1" = 100'

filed 1-16-86

159/26

159/26
PN 4345
Map BK 159 pg 26