

VERIFY QUANTITIES AND REQUIREMENTS OF HVAC & KITCHEN EQUIPMENT PRIOR TO ROUGH IN. TELEPHONE/DATA/TV CABLES AND WIRES, TERMINATIONS, AND ALL REQUIRED CABLE AND JACKS WILL BE INSTALLED BY THIRD PARTY.

POWER SUPPLY FOR COMPUTER, CASH REGISTER (86A & 94) SHALL BE ON THE SAME CIRCUIT BREAKER, W/ISOLATED GROUND & ORANGE RECEPTACLE.

CIRCUITRY SHOWN WITHOUT TICKS SHALL HAVE (2) WIRES PLUS EQUIPMENT GROUNDING CONDUCTOR.

ALL MULTI-WIRE BRANCH CIRCUITS SHALL HAVE SEPARATE NEUTRALS TO MEET THE REQUIREMENTS OF 2017 NEC 210.4(B).

TRANSFORMERS SHALL BE MOUNTED ABOVE CEILING BELOW TRUSSES WITH LOW VOLTAGE WIRING FEEDING TO ALL EXTERIOR LIGHTS.

UNDERGROUND CONDUITS SHALL BE 12" BELOW F.F.

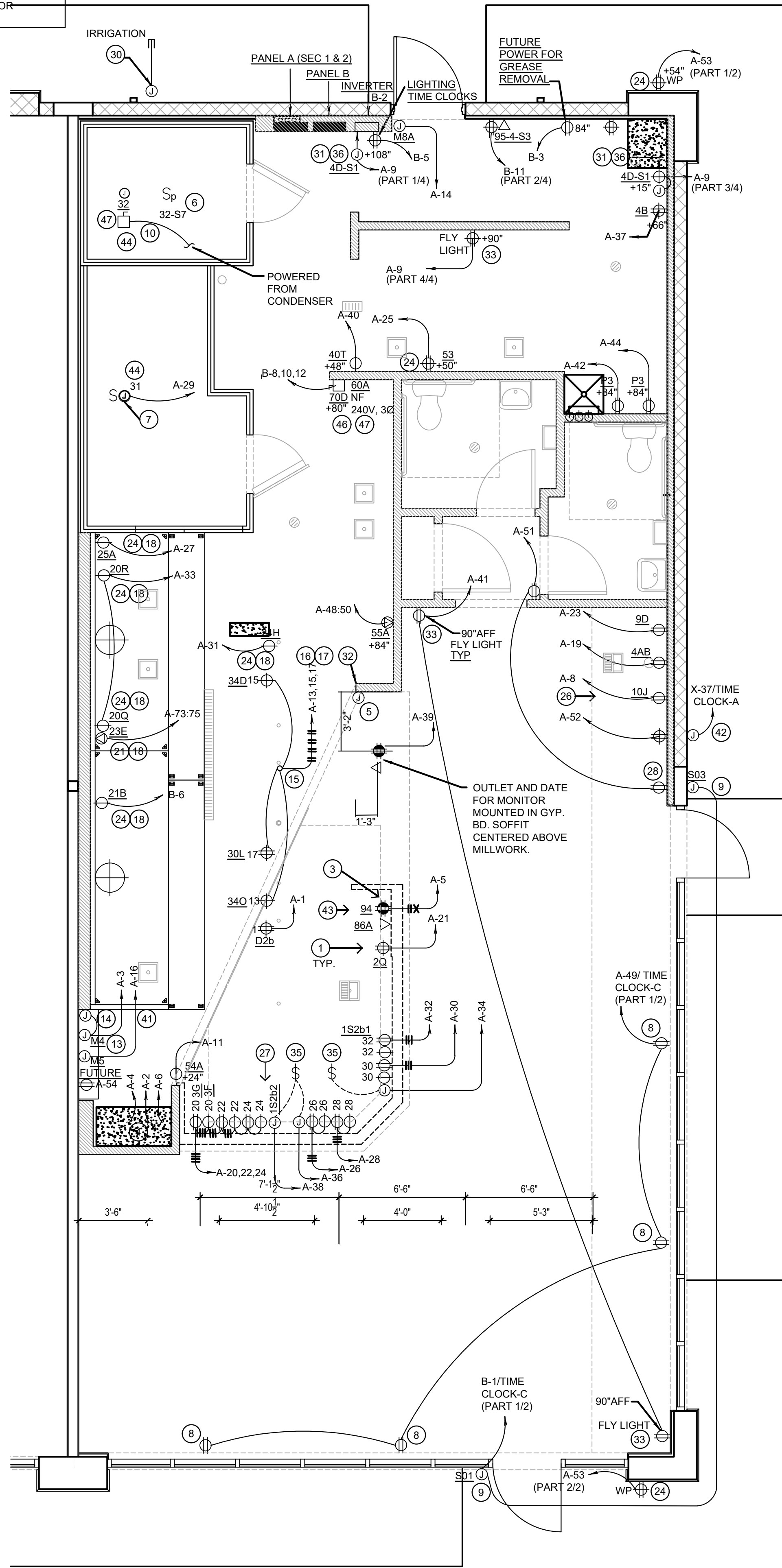
POWER PLAN GENERAL NOTES	2
NOT TO SCALE	E-100

- ALL CIRCUITRY/CONDUIT FOR FRONT LINE EQUIPMENT TO BE ROUTED IN CASEWORK TO J-BOX IN WALL AND CONCEALED IN WALL.
- NOT USED.
- PROVIDE (2) 1-1/2" CONDUITS WITH PULL STRINGS FROM CASH REGISTER TO MANAGER STATION. SEE P.O.S. AND SERVICE LINE ELEVATIONS, 1/E-200.
- SEE 'MANAGER STATION ELEVATION' 6/E-200 FOR OUTLETS AND J-BOXES.
- ANSUL PULL STATION. REFER TO DETAIL, 2/E-400.
- REFER TO 'LTG AND DOOR HEATER' WIRING DIAGRAM, 10/E-400.
- REFER TO 'COOLER EVAPORATOR COIL' WIRING DIAGRAM, 8/E-400.
- SHOW WINDOW RECEPTACLE SHALL BE CONTROLLED VIA SWITCH "1". REFER TO LIGHTING SWITCHBANK SCHEDULE, SHEET 4/E101. RECEPTACLE SHALL BE MOUNTED IN WALL AS CLOSE TO TOP OF STRUCTURAL HEADER AS POSSIBLE.
- BUILDING SIGNAGE/LOGO DEDICATED/ PROPOSED W.P. J-BOX FOR SIGNAGE. COORDINATE LOCATION WITH ARCHITECT / OWNER / SIGN PACKAGE. SIGN DISCONNECT PROVIDED BY SIGN CONTRACTOR.
- REFER TO 'FREEZER EVAPORATOR COIL' WIRING DIAGRAM, 9/E-400. THE FAN COIL UNIT IS POWERED FROM THE CONDENSER UNIT VIA DICONNECT CONNECTION. HEAT TAPE PROVIDED AND INSTALLED BY ELECTRICIAN.
- NOT USED.
- SEE TICKET PRINTER ELEVATIONS, 11/E-200.
- HOOD CONTROL PANEL/ANSUL SYSTEM CABINET. MOUNT CABINET DIRECTLY BELOW T-BAR CEILING.
- PROVIDE 2-GANG J-BOX @ 42" AFF FOR HOOD CONTROL SWITCHES. REFER TO M-400 THRU M-402.
- 1" CONDUIT STUB UP LOCATION IN STAINLESS STEEL POWER PANEL FOR ISLAND KITCHEN EQUIPMENT CONNECTION. REFER TO DETAIL 2/A-109. COORDINATE LOCATION WITH ARCHITECT / OWNER.
- ROUTE CABLING / CIRCUITRY THROUGH 1" CONDUIT IN SLAB.
- UTILIZE SEAL TIGHT CONDUIT FOR ALL WIRING INCLUDED ALONG LOW WALL PANEL.
- DEVICES UNDER HOOD TO BE PROVIDED AND INSTALLED WITH GROUND FAULT CIRCUIT BREAKER AND WATERPROOFING BOX (RED DOT #CKSUV) UNLESS OTHERWISE NOTED. REFER TO COOKLINE ELECTRICAL ELEVATIONS, 3/E-200. ROUTE HOMERUN THROUGH CONTRACTOR INTERFACED WITH THE HOOD FIRE SUPPRESSION SYSTEM. REFERENCE 13/E-400 FOR ADDITIONAL INFORMATION.
- SIMPLEX RECEPTACLE TO BE CONNECTED TO BACK-OF-HOUSE LIGHTING CIRCUITRY/CONTROL. CONTRACTOR TO PROVIDE PIGTAIL FROM CIRCULATION PUMP.
- NOT USED.
- ELECTRIC GRILL '23E': FEED WITH (2) #6,(1) #10 GROUND, 3/4" CONDUIT. REFER TO 9/E-200.
- NOT USED.
- NOT USED.
- PROVIDE WATERPROOFING, COVER, IN-USE RED DOT (#CKSUV).
- NOT USED.
- SEE DRINK STATION ELEVATIONS, 8/E-200.
- SEE 6/E-200 FOR SERVICE LINE ELEVATIONS.
- SEE DEVICE / RECEPTACLE SCHEDULE 3/E-400.
- NOT USED.
- PROVIDE AND INSTALL 3/4" CONDUIT AND PULL STRING FROM CLOSEST LANDSCAPE AREA, THROUGH WALL UP TO EMPTY FLUSH MOUNTED JUNCTION BOX @ 64" A.F.F. (FOR IRRIGATION CONTROLS). CLOSE OFF CONDUIT IN LANDSCAPE AREA WITH REMOVABLE CAP. UTILIZE WP CIRCUIT B-7 NEAR ENTRY POINT.
- REFER TO 7/E-200 FOR INSTALLATION OF CO2 MONITOR.
- SEE SWITCH BANK ELEVATION , DETAIL 10/E-200.
- FLY LIGHT RECEPTACLE SHALL BE INSTALLED WITH A RECESSED CLOCK OUTLET. TYP OF ALL LOCATIONS.
- NOT USED.
- CONNECT HEAT LAMPS TO COUNTER-MOUNTED SWITCH PROVIDED AND INSTALLED BY CONTRACTOR. COORDINATE EXACT LOCATION WITH KITCHEN EQUIPMENT PROVIDER.
- PANDA EXPRESS TO PROVIDE CO2 MONITOR, E.C. TO MOUNT OVER J-BOX WITH WIRING THROUGH WALL CONDUIT FOR CLEAN INSTALLATION. PROVIDE ALL OTHER REQUIRED CONNECTIONS AND COMPONENTS FOR FULLY WORKING SYSTEM.
- NOT USED.
- NOT USED.
- NOT USED.
- PROVIDE NORTH SHORE SAFETY 50AMP 2PHASE GFCI DEVICE(OR EQUAL) IN LINE WITH 23E GAS GRILL.
- FIRE SUPPRESSION SHUT DOWN CONTACTOR LOCATION ABOVE CEILING, REFER TO 13/E-400.
- CONTRACTOR TO FURNISH J-BOX FOR AWNING LIGHT FIXTURES. COORDINATE IN FIELD FOR EXACT LOCATION FOR J-BOX AND ANY ADDITIONAL REQUIREMENTS PRIOR TO STARTING ANY WORK AND INCLUDE ALL ASSOCIATED COSTS IN THE BID.
- SEE P.O.S. AND SERVICE LINE ELEVATIONS, SHEET 1 / E-200.
- CONTRACTOR SHALL PROVIDE CONTROL WIRING FOR EVAPORATOR COIL SERVICE SWITCH TO CONDENSOR ON ROOF TO SHUT DOWN SIMULTANEOUSLY WITH EVAPORATOR WHEN INTERIOR EVAPORATOR, BLOWER, FANS ARE BEING SERVICES OR CLEANED. COORDINATE WITH EQUIPMENT MANUFACTURER PRIOR TO START OF WORK.
- NOT USED.
- ELECTRICIAN TO WALL MOUNT A NEMA ELECTRICAL DISCONNECT BOX. ELECTRICIAN TO SUPPLY A WIRE WHIP FROM BOX TO MACHINE, FINAL CONNECTIONS BY HOBART SERVICE.
- CONTRACTOR SHALL PROVIDE DISCONNECTING MEANS THAT COMPLIES WITH NEC 422.31. THE DISCONNECTING MEANS SHALL BE WITHIN SIGHT FROM THE APPLIANCE OR BE CAPABLE OF BEING LOCKED IN THE OPEN POSITION IN COMPLIANCE WITH NEC 110.25.

POWER PLAN KEYED NOTES	3
NOT TO SCALE	E-100

NOTE FOR GFI TYPE RECEPTACLES IN KITCHEN PREP AREAS:

THE CONTRACTOR SHALL PROVIDE GROUND FAULT CIRCUIT INTERRUPTER PROTECTION FOR PERSONNEL FOR ALL RECEPTACLES SUPPLIED BY 120V SINGLE-PHASE BRANCH CIRCUIT 50AMPS OR LESS, 208V SINGLE-PHASE BRANCH CIRCUIT 50AMPS OR LESS, AND 208V THREE-PHASE BRANCH CIRCUIT 100AMPS OR LESS. SEE FLOOR PLANS FOR ADDITIONAL INFORMATION. [NEC 210.8(B)(2)].



POWER FLOOR PLAN	1
Scale: 1/4"=1'-0"	E-100



PANDA EXPRESS, INC.  
1683 Walnut Grove Ave.  
Rosemead, California  
91770  
Telephone: 626.799.9898  
Facsimile: 626.372.8288

All ideas, designs, arrangement and plans indicated or represented by this drawing are the property of Panda Express Inc. and were created for use on this specific project. None of these ideas, designs, arrangements or plans may be used by or disclosed to any person, firm, or corporation without the written permission of Panda Express Inc.

REVISIONS:


ISSUE DATE:

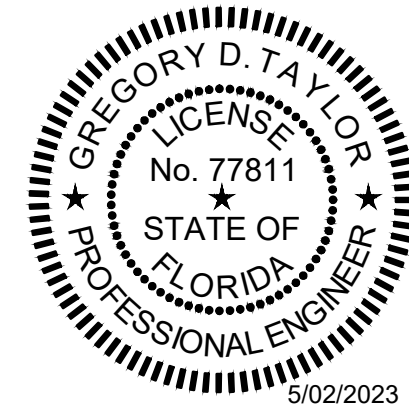
1	BID SET	2023-05-02

DRAWN BY: CPH

PANDA PROJECT #: S4-24-D22020

ARCH PROJECT #: P7377

<b>cph</b> www.cphcorp.com <b>A Full Service A &amp; E Firm</b>	Plans Prepared By <b>CPH, LLC</b>
	500 West Fulton St. Sanford, FL 32771 Ph: 407.322.6841
	Licenses: Eng. C.O.A. No. 3215 Survey L.B. No. 7143 Arch. Lic. No. AA2600926 Lndscp. Lic. No. LC0000298



PANDA EXPRESS

PANDA END CAP  
3301 W HILLSBORO BLVD  
DEERFIELD BEACH, FL 33442

E-100

POWER FLOOR PLAN

PANDA HOME 2600 R4/DAB