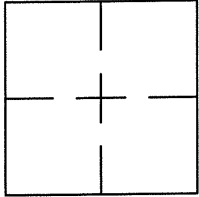


CORNER RECORD

Document Number CR 7827UNINCORPORATED EDEN TOWNSHIPCounty of ALAMEDA, CaliforniaBrief Legal Description RAILROAD SPIKE LOCATED WITHIN THE INTERSECTION OF LIBERTY STREET AND TANAGER AVENUE.

CORNER RECORD

Government Corner ☐ Control ☒
 Meander ☐ Property ☐
 Rancho ☐ Other ☐
 Date of Survey 11/21/2015

COORDINATES
(Optional)

N. 2083709*
 E. 6092993*
 Zone _____ Datum _____
 Elev. _____

Corner — Left as found ☒ Found and tagged ☐ Established ☐ Reestablished ☐ Rebuilt ☐

Identification and type of corner found: Evidence used to identify or procedure used to establish or reestablish the corner:
FOUND RAILROAD SPIKE WITH PUNCH LOCATED WITHIN THE INTERSECTION OF LIBERTY STREET AND TANAGER AVENUE.

THIS POINT WAS REFERENCED PRIOR TO A CONSTRUCTION PROJECT IN THE VICINITY.

A description of the physical condition of the monument as found and as set or reset: _____

FOUND AND SET POINTS AS SHOWN ON PAGE 2.

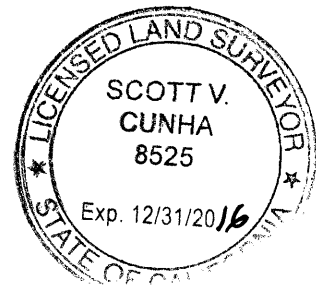
THESE TIES ARE FOR THE PURPOSE OF PERPETUATING THE FOUND MONUMENTATION.

NO CLAIM IS MADE AS TO THE RELATIONSHIP OF THE POINTS OR LINES SHOWN HEREON TO TRUE BOUNDARY LOCATIONS.

SURVEYOR'S STATEMENT

This Corner Record was prepared by me or under my direction in conformance with the Land Surveyors' Act on December 3, 2015.

Signed Scott V. Cunha L.S. Number 8525
Scott V. Cunha Exp. 12/31/16



COUNTY SURVEYOR'S STATEMENT

This Corner Record was received 12-07 2015 and examined and filed 12-21 2015.

Signed Albert Jordan Title Deputy County Surveyor



County Surveyor's Comment _____

SPEC 2261-PRE

R23427



SCALE: 1"=30'

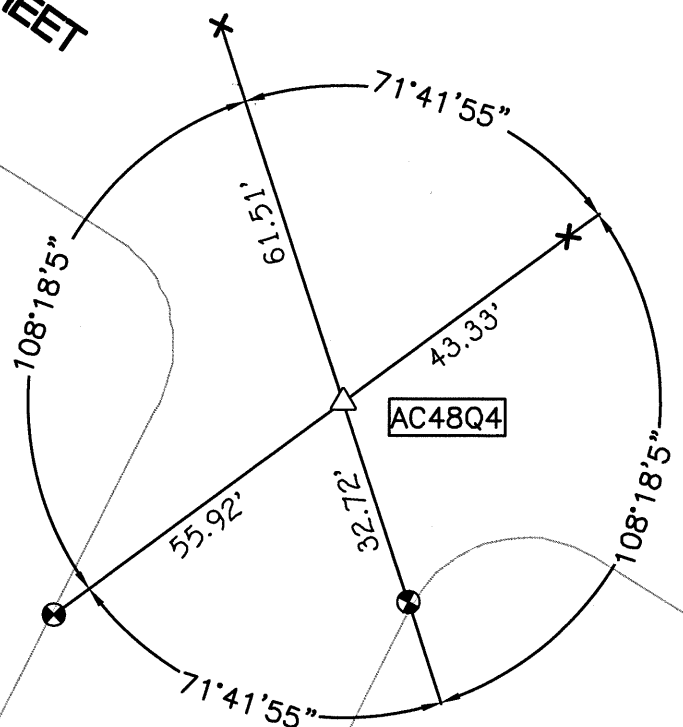
LEGEND

- FOUND BRASS DISC WITH PUNCH IN MONUMENT WELL
- △ FOUND RAILROAD SPIKE WITH PUNCH
- FOUND 5/8" IRON PIN WITH PUNCH
- SET REBAR & CAP
- ⊗ SET CUT CROSS IN WALK
- × SET PK NAIL & LARGE SHINER
- × SET CUT CROSS IN CURB
- AA##A# ALAMEDA COUNTY MONUMENT ID
- (19592) STREET ADDRESS

I-580

LIBERTY
STREET

TANAGER
AVENUE



(15545)