

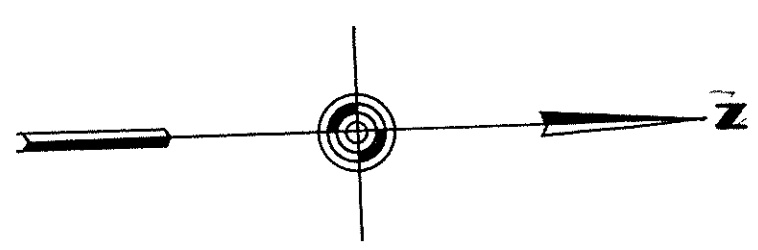
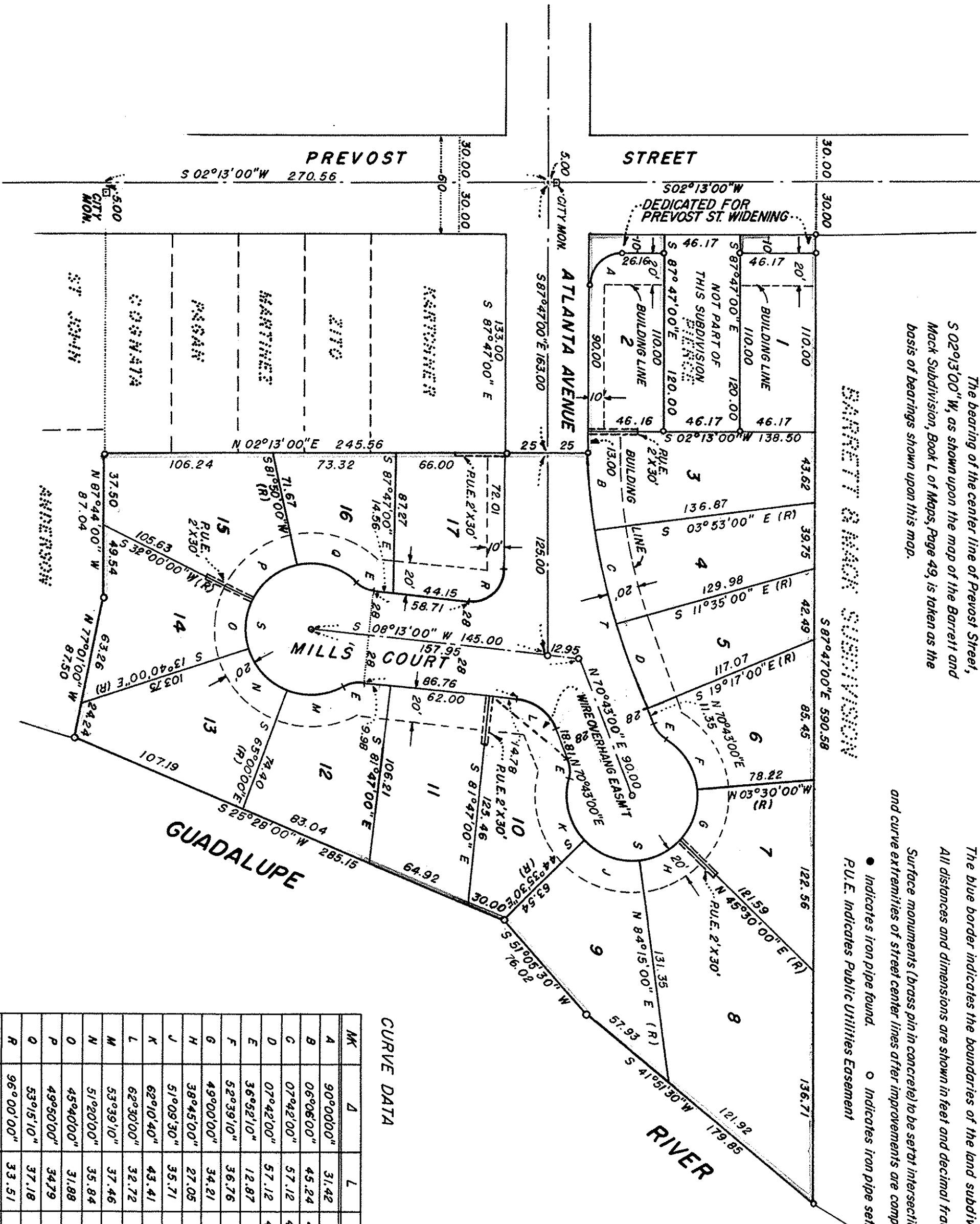
BASIS OF BEARINGS

The bearing of the center line of Prevost Street, S 02°13'00"W, as shown upon the map of the Barrett and Mack Subdivision, Book L of Maps, Page 49, is taken as the basis of bearings shown upon this map.

NOTES

The blue border indicates the boundaries of the land subdivided by this map. All distances and dimensions are shown in feet and decimal fractions thereof. Surface monuments (brass pin in concrete) to be set at intersections, angle points and curve extremities of street center lines after improvements are completed.

- Indicates iron pipe found.
- Indicates iron pipe set.
- P.U.E. Indicates Public Utilities Easement



Scale: 1"=60'

CURVE DATA				
MK	Δ	L	R	T
A	90°00'00"	31.42	20.00	20.00
B	06°06'00"	45.24	425.00	
C	07°42'00"	57.12	425.00	
D	07°42'00"	57.12	425.00	
E	36°32'10"	12.87	20.00	
F	52°39'10"	36.76	40.00	
G	48°00'00"	34.21	40.00	
H	38°45'00"	27.05	40.00	
J	51°09'30"	35.71	40.00	
K	62°10'40"	43.41	40.00	
L	62°30'00"	32.72	30.00	18.20
M	53°39'10"	37.46	40.00	
N	51°00'00"	35.84	40.00	
O	45°40'00"	31.88	40.00	
P	49°50'00"	34.79	40.00	
Q	53°15'10"	37.18	40.00	
R	96°00'00"	33.51	20.00	22.21
S	253°44'20"	177.14	40.00	
T	21°30'00"	159.48	425.00	80.69

OWNER'S CERTIFICATE

We hereby certify that we are the owners of or have some right title or interest in and to the real property included within the subdivision shown upon this map, and that we are the only persons whose consent is necessary to pass a clear title to said property, and we consent to the making of said map and subdivision as shown within the border lines, and hereby dedicate to public use all the streets shown upon said map within said subdivision.

We also hereby dedicate for public use easements for public utilities under, on and over those certain strips of land each designated "Public Utilities Easement" upon said map within solid subdivision, such strips to be kept open and free from buildings and structures of any kind.

We also hereby dedicate for public use easements for drainage under, on and over those certain strips of land each designated "Drainage Easement" upon said map within said subdivision, such strips to be kept open and free from structures and buildings of any kind.

We also dedicate for public use easements for light and air under, on and over those certain strips of land lying between the lines of streets and those lines each designated "Building Line" upon said map within said subdivision, such strips of land to be kept open and free from buildings and structures of any kind, excepting irrigation and sprinkler systems and appurtenances thereto.

*Elizabeth Mills*  
Elizabeth Mills  
ELIZABETH MILLS

ACKNOWLEDGMENT

STATE OF CALIFORNIA } ss  
COUNTY OF SANTA CLARA }  
On this 11th day of October, 1956, before me,  
E.O. Bell, a Notary Public in and for the County of  
Santa Clara, State of California, residing therein and duly commissioned and sworn, personally appeared Igor Mills and Elizabeth Mills his wife, known to me to be the persons who executed the within instrument, and acknowledged to me that they executed the same.

IN WITNESS WHEREOF, I have hereunto set my hand and affixed my official seal, on the day and year in this certificate first above written.

*E.O. Bell*  
Notary Public in and for the County of Santa Clara,  
State of California

ENGINEER'S CERTIFICATE

I, G.C. McKinney, do hereby certify that I am a Registered Civil Engineer of the State of California, that this map, consisting of one sheet, correctly represents a survey made under my supervision in August 1956, that the survey is true and complete as shown, that all monuments of the kind shown hereon actually exist and that their positions are correctly shown, and that said monuments are sufficient to enable the survey to be retraced.

*G.C. McKinney*  
Registered Civil Engineer Cert. No. 7914

CITY ENGINEER'S CERTIFICATE

I hereby certify that I have examined the herein final map of Tract No. 1795, Mills Court, that the subdivision shown hereon is substantially the same as it appeared on the tentative map hereof and any approved alterations; that all provisions of the Subdivision Map Act and all local ordinances applicable at the time of approval of the tentative map have been complied with, and that I am satisfied that said map is technically correct.

Dated Nov. 5, 1956  
BY *H.J. Flannery*  
H.J. FLANNERY City Engineer

CERTIFICATE OF CITY PLANNING COMMISSION

Approved by the Planning Commission of the City of San Jose, California in accordance with the requirements of law in a duly authorized meeting held on the 31st day of October, 1956.

*Richard H. Gutierrez*  
Secretary, Planning Commission  
City of San Jose, California

CITY CLERK'S CERTIFICATE

It is ordered that the map of Tract No. 1795, Mills Court, be and the same is hereby approved, that Atlanta Avenue, Mills Court and the portion of Prevost Street shown upon said map and therein offered for dedication, and also the easements as shown for the use of public utilities and drainage, be and the same are hereby accepted for the purposes for which the same are offered for dedication.

I hereby certify that the foregoing order was adopted by the City Council of the City of San Jose, California, at a meeting held on November 5, 1956.

*Helen L. Brubaker*  
City Clerk of the City of San Jose, California

COUNTY RECORDER'S CERTIFICATE

Accepted for record and recorded in Book 73 of Maps of Page 35 in the office of the Recorder of Santa Clara County, California, on the 8th day of November, 1956, at 3:39 minutes past 3 o'clock P.M.

Syl C. Tully, County Recorder  
Santa Clara County, California

Recorder's File No. 1373208  
Fee \$5.00 paid

*E.O. Bell*  
Notary Public in and for the County of Santa Clara, California

TRACT NO. 1795

MILLS COURT

CONSISTING OF ONE SHEET

LYING WITHIN THE CITY OF SAN JOSE

BEING A RE-SUBDIVISION OF A PORTION OF  
BARRETT & MACK SUBDIVISION

OF  
LOTS 23 & 24, ODDFELLOWS SAVINGS BANK TRACT

BOOK "L" OF MAPS, PAGE 49, RECORDS OF

SANTA CLARA COUNTY, CALIFORNIA

G.C. McKinney, Civil Engineer

2150 The Alameda, San Jose, California

OCTOBER 1956