

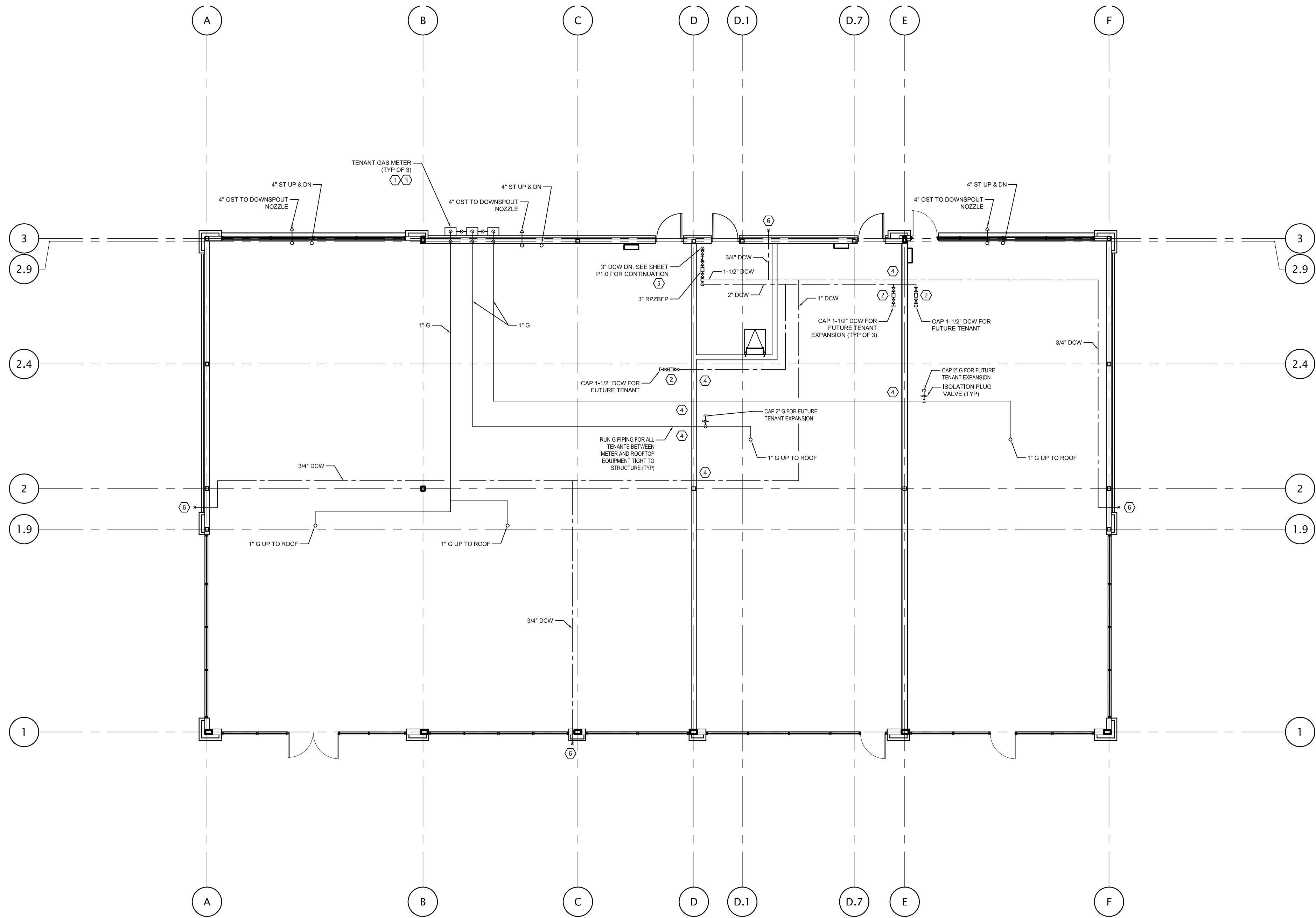
PLUMBING GENERAL NOTES

- 1.THESE DRAWINGS ARE DIAGRAMMATIC & INDICATE THE GENERAL EXTENT OF THE WORK. PROVIDE PLUMBING SYSTEMS STUBBED INTO TENANT SPACE PER APPLICABLE CODES INCLUDING REQUIRED COMPONENTS, OFFSETS REQUIRED TO AVOID THE STRUCTURE, ETC.
- 2.CONTRACTOR SHALL COORDINATE THE INSTALLATION OF PLUMBING AND PIPING WITH THE WORK OF ALL OTHER TRADES.
- 3.PIPING SHALL NOT BE LOCATED OVER ELECTRICAL EQUIPMENT/PANELS. PROVIDE REQUIRED CLEARANCE IN FRONT OF ELECTRICAL EQUIPMENT. PIPING SHALL NOT INTERFERE WITH ELECTRICAL EQUIPMENT CLEARANCE.
- 4.PIPING SHALL NOT BE INSTALLED IN A LOCATION THAT RESTRICTS THE ACCESS TO MECHANICAL DEVICES REQUIRING ACCESS.
- 5.CONTRACTOR SHALL PROVIDE SUPPLEMENTARY STEEL AS REQUIRED FOR THE PROPER SUPPORT OF ALL MECHANICAL SYSTEMS.
- 6.PLUMBING VENT PIPING THRU THE ROOF SHALL BE LOCATED 10' FROM ANY FRESH AIR INTAKE LOCATION AND A MINIMUM OF 18" CLEAR FROM THE INSIDE FACE OF PARAPET.
- 7.PROVIDE CODE REQUIRED CLEARANCE FOR ALL CLEAN OUTS INSTALLED IN SANITARY WASTE AND VENT PIPING.
- 8.MINIMUM UNDERGROUND SANITARY SEWER PIPE SIZE SHALL BE 4".
- 9.MINIMUM SLOPE OF UNDERGROUND SANITARY SEWER PIPING SHALL BE 1/8" PER FOOT. MINIMUM SLOPE OF UNDERGROUND WASTE GREASE PIPING SHALL BE 1/4" PER FOOT.
- 10.TRAP PRIMERS SHALL BE PROVIDED AT NO ADDITIONAL COST TO OWNER IF AND WHEN REQUIRED BY LOCAL GOVERNING CODES.

- 11.PROVIDE AND INSTALL BALL TYPE SHUT-OFF VALVES ON ALL BRANCH SUPPLY LINES.
- 12.GENERAL CONTRACTOR SHALL COORDINATE WATER AND GAS METER LOCATIONS AND INSTALLATIONS WITH TENANT REQUIREMENTS, LOCAL AUTHORITIES AND CIVIL DRAWINGS.
- 13.ALL PLUMBING MUST BE TESTED IN ACCORDANCE WITH THE REQUIREMENTS OF THE LOCAL STATE PLUMBING CODE IN THE PRESENCE OF THE PLUMBING INSPECTOR.
- 14.FUEL GAS PIPING, VENTING SYSTEMS AND EQUIPMENT SHALL BE IN ACCORDANCE WITH GOVERNING PROVISIONS OF THE INTERNATIONAL FUEL GAS CODE.
- 15.DUCTILE IRON PIPE SHALL BE USED FOR ALL SANITARY PIPE PASSING THROUGH A FOUNDATION WALL AND THE FOUNDATION OVER DIG.
- 16.THE REQUIREMENTS AND LOCATION OF THE WATER METER, THE WATER METER REMOTE REGISTER AND WIRING PROVISIONS SHALL BE DETERMINED BY THE SUPERINTENDENT OF THE WATER DEPARTMENT.
- 17.SHUT OFF VALVES ARE REQUIRED ON BOTH SIDES OF WATER METERS AND BACKFLOW DEVICES.
- 18.ALL DEVICES AND ASSEMBLIES FOR THE PREVENTION OF BACKFLOW SHALL BE TESTED AND APPROVED BY A CROSS-CONNECTION CONTROL DEVICE INSPECTOR BEFORE INITIAL OPERATION.
- 19.ALL PLUMBING WORK SHALL BE IN STRICT COMPLIANCE WITH THE MARYLAND STATE PLUMBING CODE.

PLUMBING KEYED NOTES

- 1 PROVIDE NATURAL GAS PRESSURE REGULATOR CAPABLE OF PROVIDING NATURAL GAS @ 0.5 PSI. COORDINATE WITH GAS COMPANY.
- 2 WATER METER NEXTCENTURY MODEL M201C.
- 3 ROUTE GAS PIPING FROM DISCHARGE OF METER/REGULATOR TO WALL PENETRATION. LOCATE WALL PENETRATION AS CLOSE TO GRADE AS POSSIBLE.
- 4 PROVIDE SLEEVES PACKED WITH FIRESTOPPING MATERIAL TO MAINTAIN RATED WALL ASSEMBLY.
- 5 LANDLORD CITY WATER SUB METER INV ERTICAL. REFER TO KEY NOTE 2 METER MODEL NUMBER.
- 6 HOSE BIBB: WOODFORD MB65 FREEZELESS COMMERCIAL CONCEALED BOX TYPE WALL HYDRANT IN SECURE LOCK STYLE MODULAR BOX. SINGLE CHECK ANTI-SIPHON VACUUM BREAKER, CHROME HEAD, BRASS VALVE BODY HYDRANT WITH 3/4" HOSE CONNECTION 18" AFF.



1 FIRST FLOOR PLUMBING PLAN  
SCALE: 1/8" = 1'-0"



CFT NV DEVELOPMENT, LLC.  
1120 N. Town Center Dr., Suite 150  
Las Vegas, Nevada 89144  
  
Telephone: 626.372.8425  
Facsimile: 626.372.8288

All ideas, designs, arrangement and plans indicated or represented by this drawing are the property of CFT Development, LLC, and were created for use on this specific project. None of these ideas, designs, arrangements or plans may be used by or disclosed to any person, firm, or corporation without the written permission of CFT Development, LLC.

REVISIONS:	
ISSUE DATE:	
BIDS	2-10-23

DRAWN BY: CJS

CFT PROJECT #: 1241

ARCH PROJECT #: JCDT22004700



BUILDING B - (SHELL ONLY)  
MULTI-TENANT (3 UNITS)

N. PRINCE FREDERICK BLVD & TRASKERS BLVD.  
PRINCE FREDERICK, MD 20678

P 1.1

FIRST FLOOR PLUMBING PLAN

CFT MULTI-TENANT (3 UNITS)