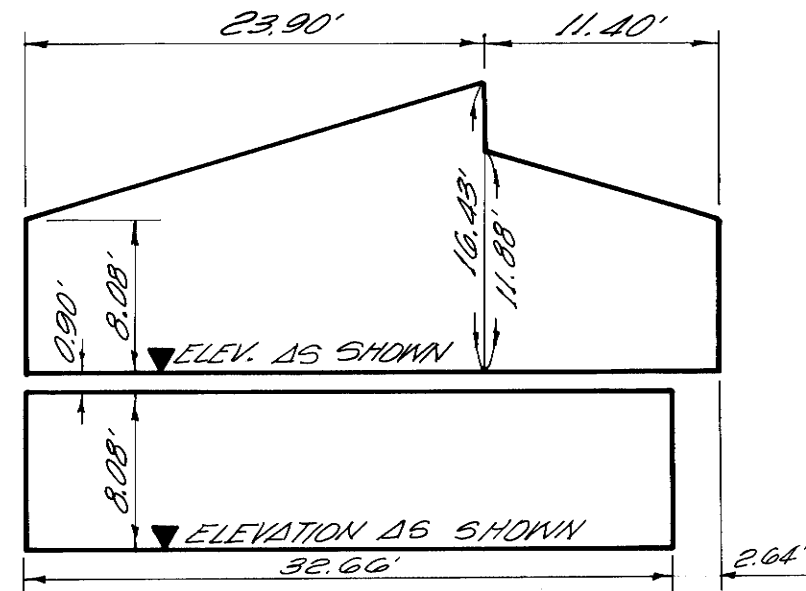
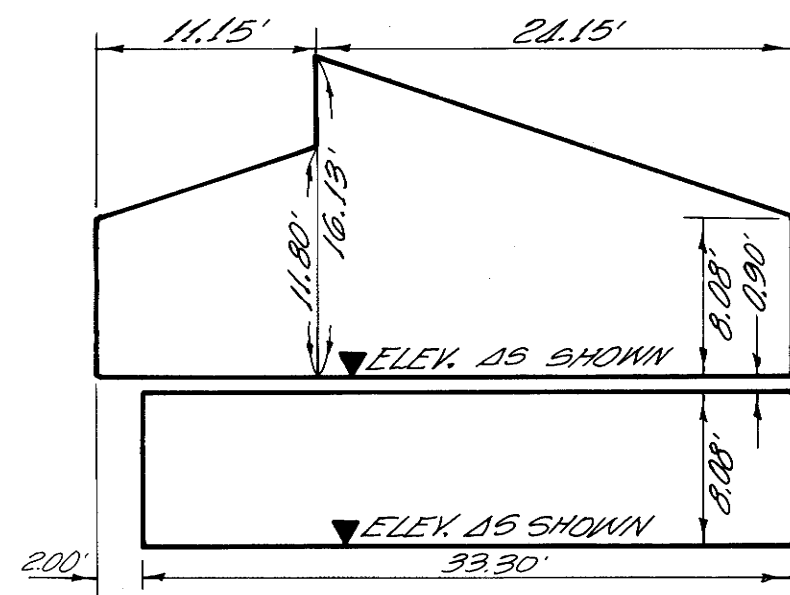


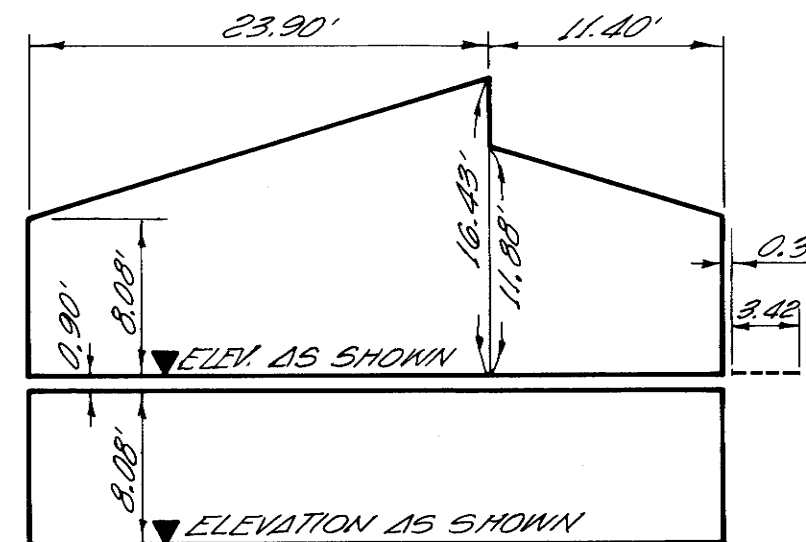
SECTION A<sub>1</sub> - A<sub>1</sub>



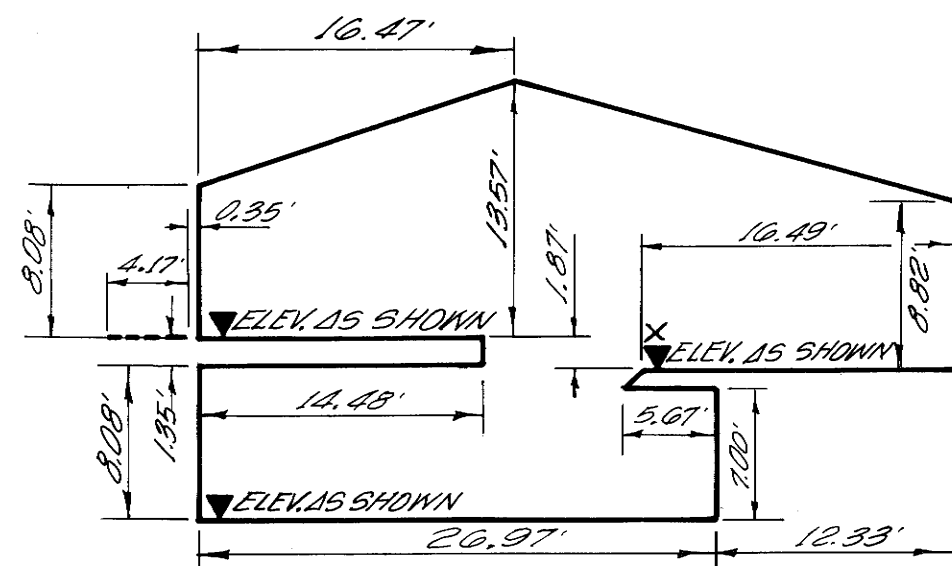
SECTION B<sub>1</sub> - B<sub>1</sub>



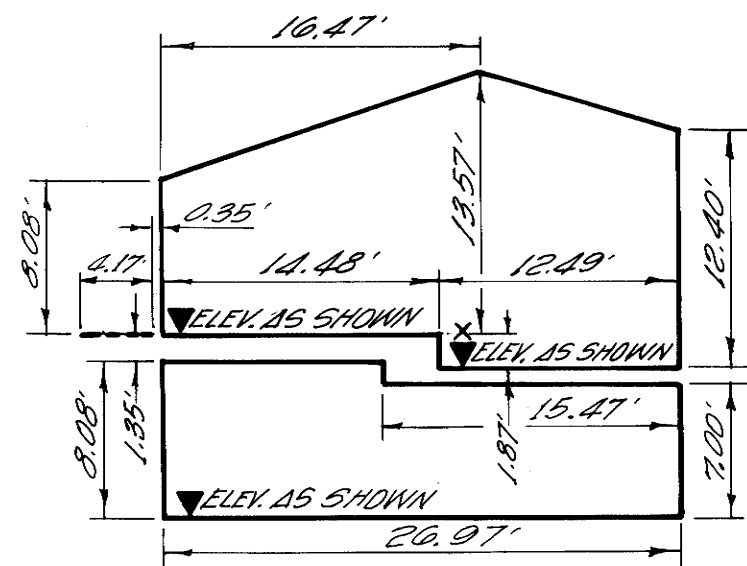
SECTION A-A  
UNITS 5 THRU 18  
AND 27 THRU 32



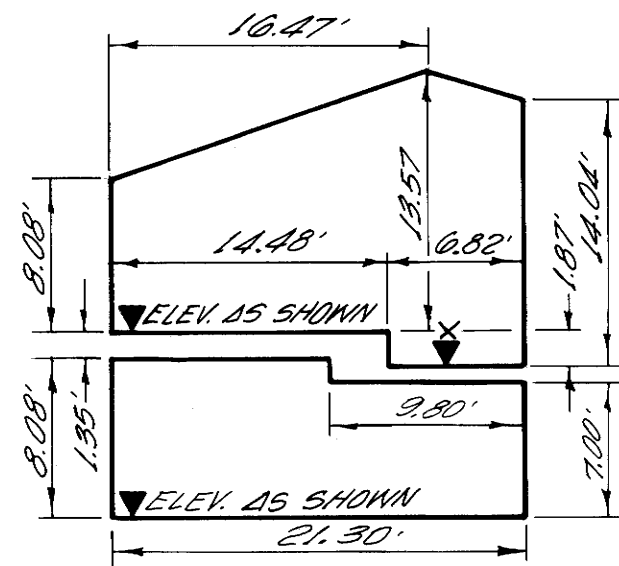
SECTION B-B  
UNITS 19 THRU 26



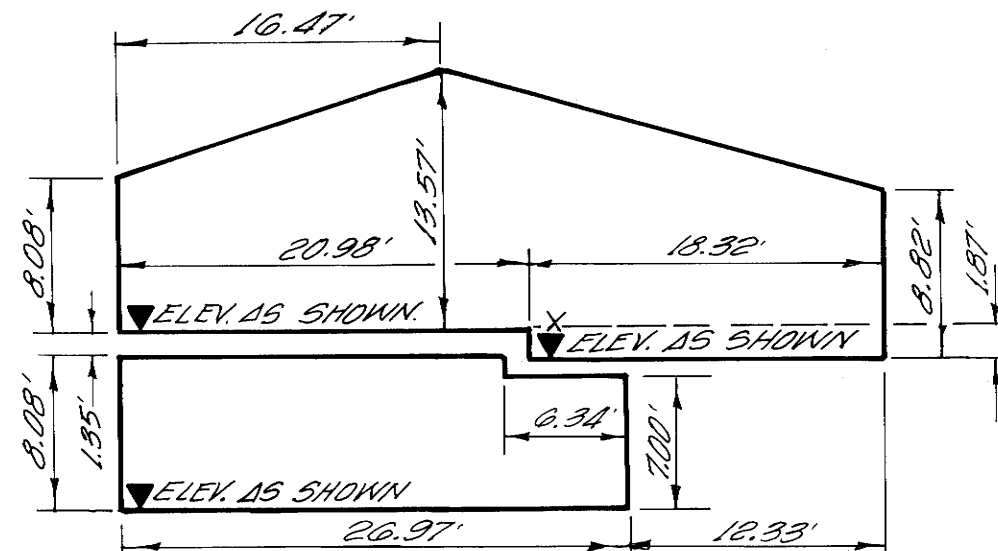
SECTION C<sub>1</sub> - C<sub>1</sub>



SECTION C<sub>2</sub> - C<sub>2</sub>



SECTION C<sub>3</sub> - C<sub>3</sub>



SECTION C-C  
UNITS 1 THRU 4 AND 33 THRU 36  
TYPICAL SECTIONS

UNIT NO.	FINISH FLOOR	UNIT NO.	FINISH FLOOR
1L	8332.12	19L	8354.99
1U	8341.55	19U	8363.97
1X	8339.68	20L	8354.99
2L	8332.12	20U	8363.97
2U	8341.55	21L	8360.88
2X	8339.68	21U	8369.86
3L	8332.12	22L	8360.88
3U	8341.55	22U	8369.86
3X	8339.68	23L	8365.45
4L	8332.12	23U	8374.43
4U	8341.55	24L	8365.45
4X	8339.68	24U	8374.43
5L	8341.34	25L	8368.33
5U	8350.32	25U	8377.31
6L	8341.34	26L	8368.33
6U	8350.32	26U	8377.31
7L	8342.58	27L	8371.65
7U	8351.56	27U	8380.63
8L	8342.58	28L	8371.65
8U	8351.56	28U	8380.63
9L	8344.09	29L	8371.65
9U	8353.07	29U	8380.63
10L	8344.09	30L	8371.65
10U	8353.07	30U	8380.63
11L	8344.69	31L	8371.65
11U	8353.67	31U	8380.63
12L	8344.69	32L	8371.65
12U	8353.67	32U	8380.63
13L	8349.41	33L	8364.96
13U	8358.39	33U	8374.39
14L	8349.41	33X	8372.52
14U	8358.39	34L	8364.96
15L	8353.38	34U	8374.39
15U	8362.36	34X	8372.52
16L	8353.38	35L	8360.99
16U	8362.36	35U	8376.42
17L	8354.62	35X	8374.55
17U	8363.60	36L	8366.99
18L	8354.62	36U	8376.42
18U	8363.60	36X	8374.55

BENCH MARK:

U.S.G.S. BENCH MARK STANDARD DISC IN BOTTOM  
STEP MAMMOTH POST OFFICE MARKED  
17 U.D. 1952 #7860 ELEV. 7859.561

MAMMOTH POINT  
TRACT NO. 36-9

MONO COUNTY, CALIFORNIA  
BEING A SUBDIVISION OF A PORTION OF THE SOUTHEAST  
QUARTER OF SECTION 33, T.3S., R.27E., M.D.M.  
PLAN FOR  
CONDOMINIUM PURPOSES  
NO SCALE