

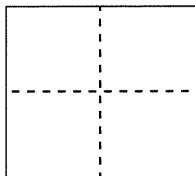
CORNER RECORD

Document Number **CR 9653**

City of Oakland (APN 29A-1328-3)

County of Alameda, California

Brief Legal Description Monument near 4343 Arden Place



CORNER TYPE

Government Corner ☐ Control ☒
 Meander ☐ Property ☐
 Rancho ☐ Other ☐

Date of Survey December 21, 2016

COORDINATES (Optional)

N. _____
 E. _____
 Zone _____ NAD27 ☐ NAD83 ☐
 NAD83 Epoch _____
 Elev. _____
 Vert. Datum: NGVD29 ☐ NAVD88 ☐
 Meas. Units: Metric ☐ Imperial ☐

Pre-Construction (water line) Corner Record

Corner - Left as found ☒ Found and tagged ☐ Established ☐ Reestablished ☐ Rebuilt ☐

Identification and type of corner found: Evidence used to identify or procedure used to establish or reestablish the corner:
Found monument that could be damaged or destroyed by planned water line construction project.

Monument was referenced as shown on Page 2. The purpose of this Corner Record is to preserve possible evidence only; no attempt was made to determine the relationship to property, centerline, or right-of-way lines.

A description of the physical condition of the monument as found and as set or reset:

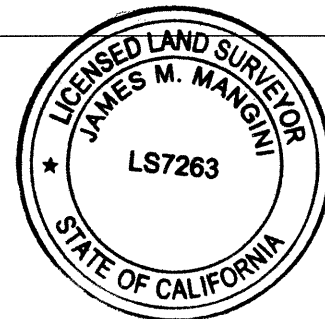
Monument was found in good condition and was referenced with four set reference points representing two intersecting lines as shown on Page 2.

Reference EBMUD Field Book 4565, Page 76 (Clarke/Reymann)

SURVEYOR'S STATEMENT

This Corner Record was prepared by me or under my direction in conformance with the Professional Land Surveyor's Act on JANUARY 18, 2017

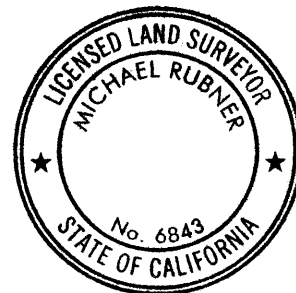
Signed James M. Mangini P.L.S. or R.C.E. No. 7263



COUNTY SURVEYOR'S STATEMENT

This Corner Record was received 19 JANUARY, 2017
 and examined and filed 28 APRIL, 2017

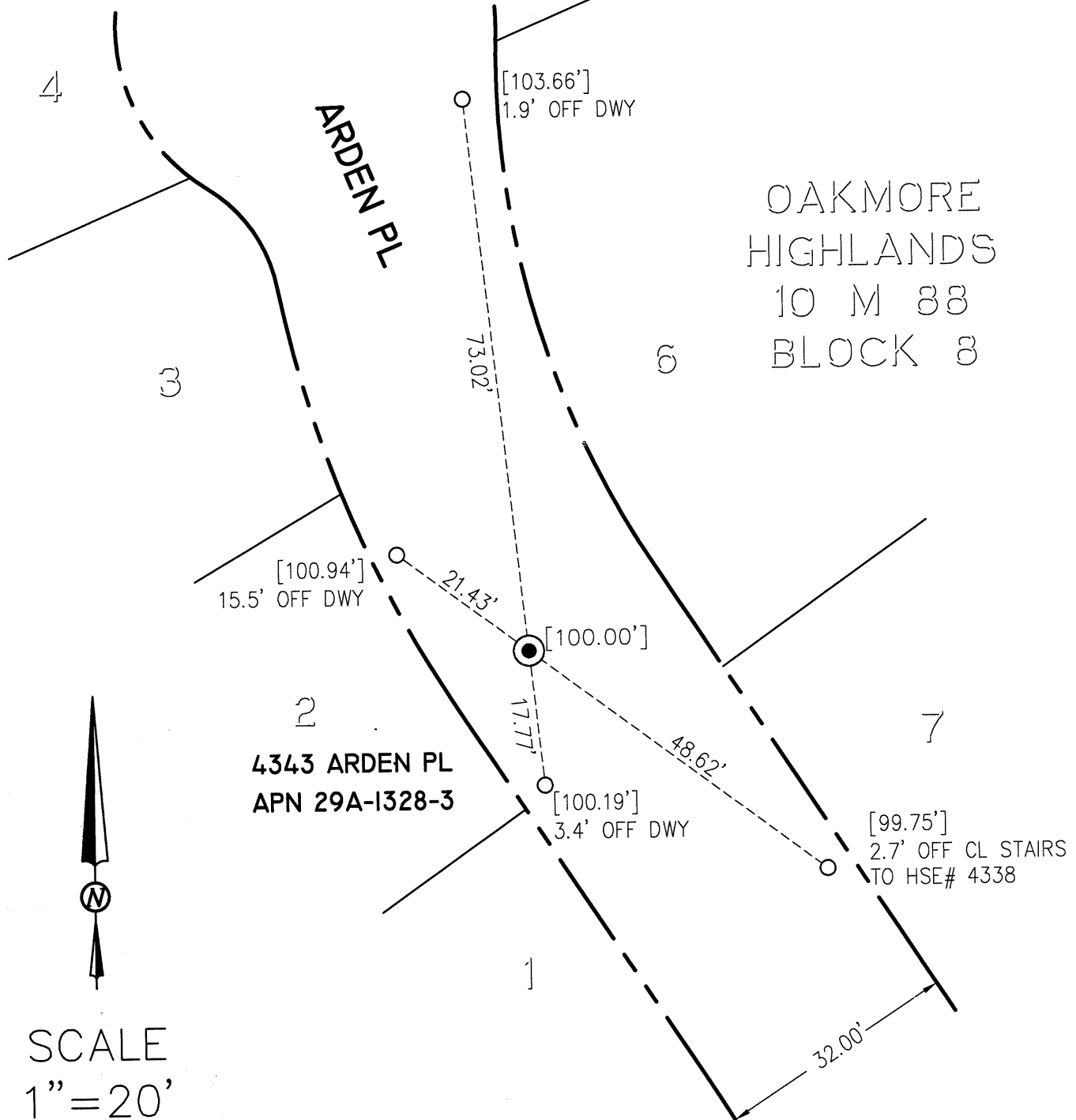
Signed Michael Rubner P.L.S. or R.C.E. No. 6843
 Title COUNTY SURVEYOR



County Surveyor's Comment: _____

OAKLAND

ALAMEDA COUNTY



SCALE
1"=20'

LEGEND

- FOUND 1/8" PIN IN CONCRETE POST, 1.1' DOWN, UNDER STANDARD MONUMENT CASING
- SET CONCRETE ANCHOR NAIL WITH 1-1/2" ALUMINUM WASHER, STAMPED "EBMUD MON RP"

[] ASSUMED ELEVATION (MEASURED USING A LEICA DNA10 DIGITAL LEVEL)



ADDRESS: 4343 ARDEN PLACE
APN: 29A-1328-3

CR# 9653

CR