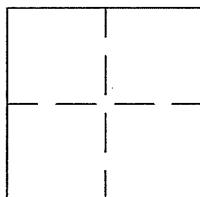


# CORNER RECORD

BK 55 PG 96

APN No. 902 - 002 - 004 - 00(Optional) Document Number CR 3887  
Unincorporated LIVERMORE County of ALAMEDA, California  
Brief Legal Description: N. LIVERMORE AVE.



## CORNER TYPE

Government Corner ☐ Control ☐  
Meander ☐ Property ☐  
Rancho ☐ Other ☒  
Date of Survey AUGUST 12, 2009

## COORDINATES (Optional)

N. 457, 578  
E. 1, 633, 161  
Zone ☐ NAD27 ☐ NAD83 ☐  
NAD 83 Epoch ☐  
Elev. ☐

Corner - Left as found ☐ Found and tagged ☐ Established ☐ Reestablished ☒ Rebuilt ☐

In compliance with Section 8771 of the Professional Land Surveyors' Act, this corner record is being filed to ESTABLISH ☐ / REESTABLISH ☒ the position of an existing monument PRIOR ☐ / SUBSEQUENT ☒ to street or highway reconstruction. (Use this portion only when applicable.)

Identification and type of corner found: Evidence used to identify or procedure used to establish or reestablish the corner:

CR 3740 WAS USED AS THE BASIS FOR RE-ESTABLISHING THE MONUMENT'S ORIGINAL LOCATION, AS FOLLOWS: REF. PTS. 1 & 3 AND 2 & 4 (DIAGONAL PAIRS) WERE FOUND UNDISTURBED.

A description of the physical condition of the monument as found and as set or reset: SET COUNTY DISK STAMPED AY48C7 @ THE INTERSECTION OF THESE 2 DIAGONAL LINES, SEE PG. 2.

N. LIVERMORE AVE. STA. 215+98.59

## SURVEYOR'S STATEMENT

This Corner Record was prepared by me or under my direction in conformance with the Land Surveyors' Act on SEPT. 17, 20 09.

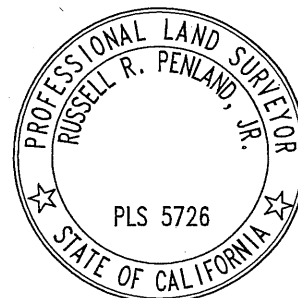
Signed Robert A. Machado (L.S.) or R.C.E. Number 7380



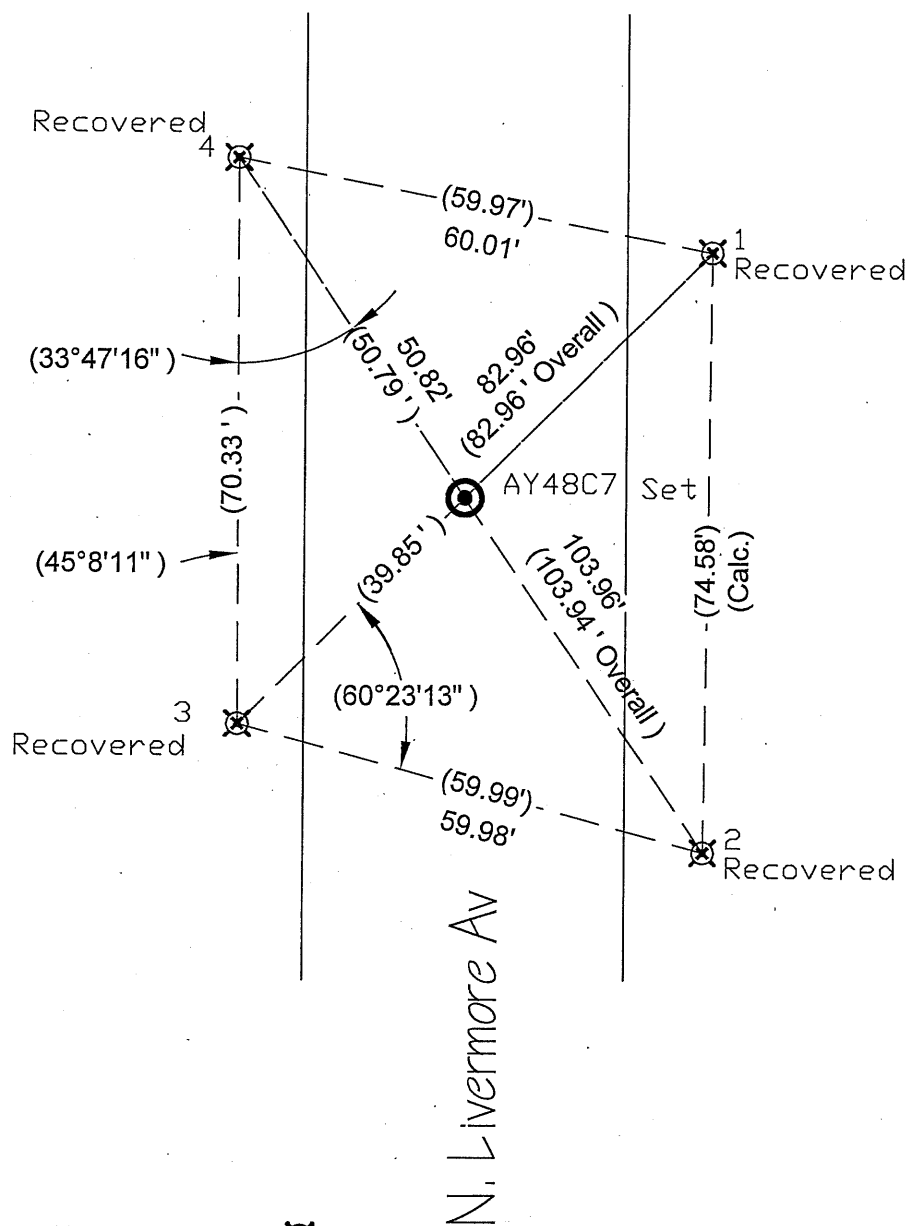
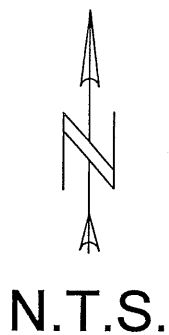
## COUNTY SURVEYOR'S STATEMENT

This Corner Record was received SEPT. 17, 20 09 and examined and filed 11-15-20 13.

Signed [Signature] Title County Surveyor



County Surveyor's Comment



### Legend

Found: I.B. with "x" and Punch Mark

Set: Standard County Brass Disk

Measurements from CR 3740 shown as (###.##) typical.

### Credits

Lead: Robert Machado

Assist.: Benjamin Arcibal

Computations: Terri Graumann

CAD: reid

File Name: CR3887\_CR3740\_Thursday\_20090728 CR Page 2 with dxf.dwg

Job#: R23343

### Reference(s)

CR 3740

RS for Alignment of North Livermore Ave

RS Bk 4 Pg 55-69 Sht. 14 of 15

Alameda County Monument Id System (PTa...) **AY48C7**