

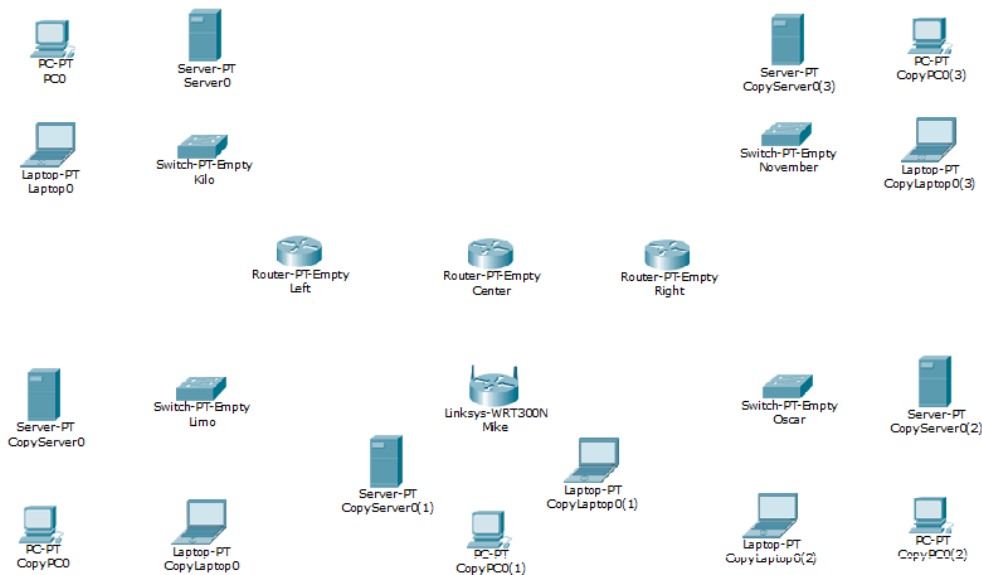
MODUL SIMULASI ROUTING MENGUNAKAN PACKET TRACER

Nama: Julio Adam Pratama

Kelas: XIC

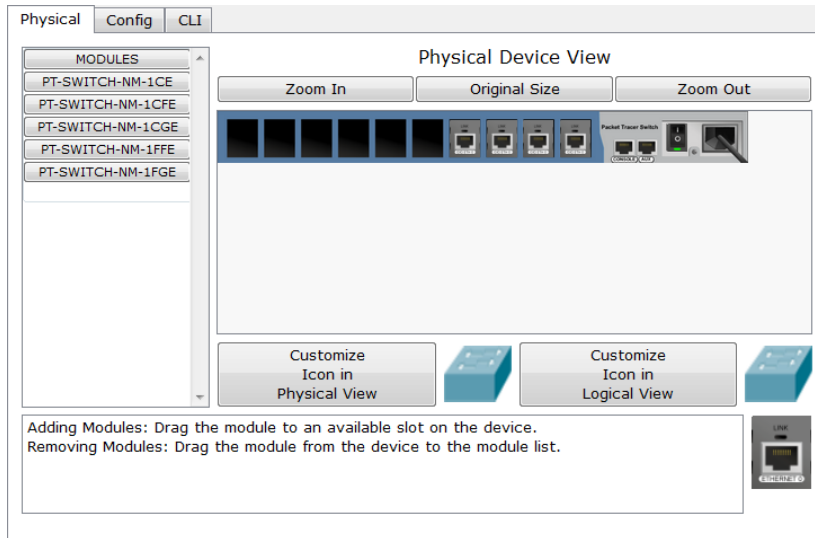
NIS: 121918

1. Buat 3 Router dengan tata letak, kiri, tengah, dan kanan.
2. Buat 5 Switch dengan nama 'Kilo', 'Limo', 'Mike', 'November', dan 'Oscar'.

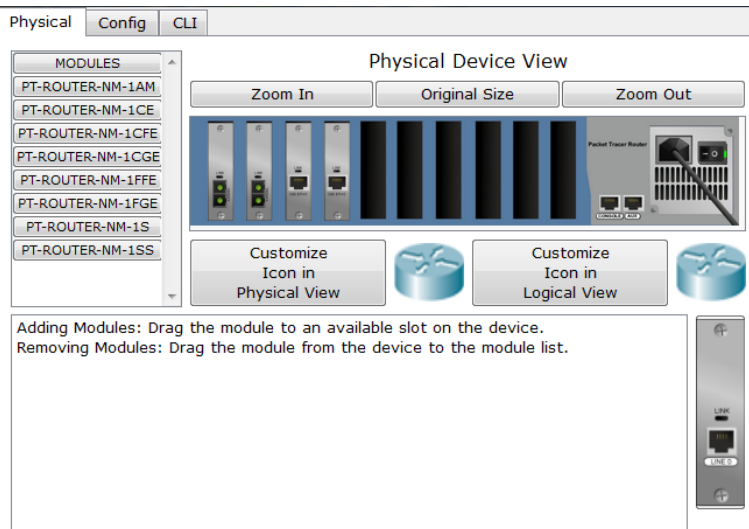


Tambahkan Module PT-HOST-NM-1CGE pada semua perangkat Server, PC, dan Laptop, kecuali perangkat dibawah LAN Mike. Tambahkan Module Linksys-WMP300N pada setiap perangkatnya.

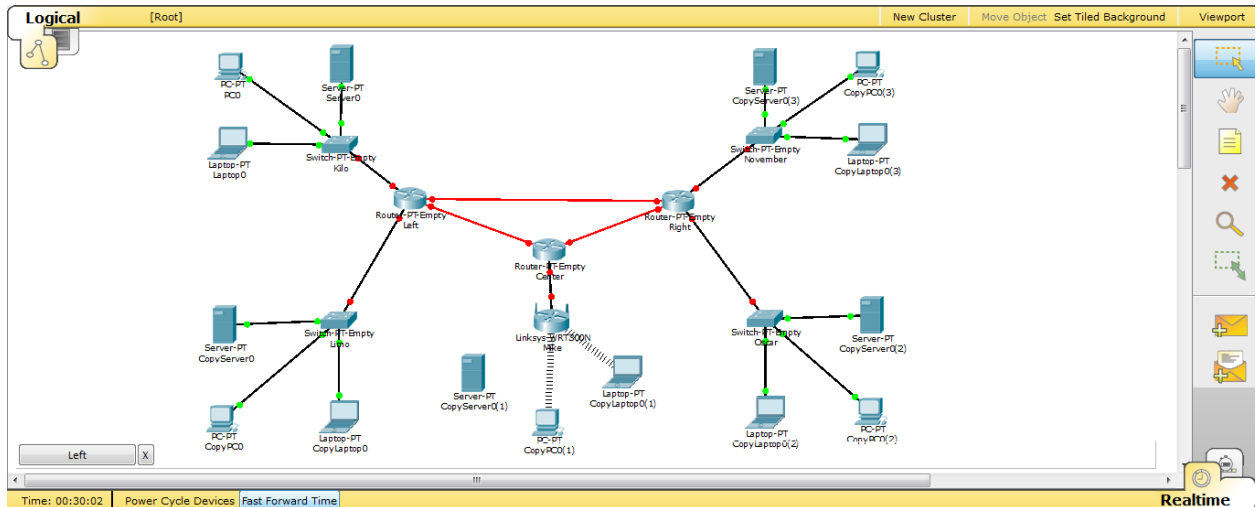
3. Tambahkan 4 Module PT-SWITCH-NM-1CGE pada setiap switch yang ada.



4. Tambahkan 2 Module PT-SWITCH-NM-1CGE dan 2 Module PT-SWITCH-NM-1FGE pada setiap Router.



5. Hubungkan PC, Laptop, Server, dan Switch dengan Copper Straight. Hubungkan sesama Router dengan Fiber.



6. Pastikan semua Interface yang ada di Router dalam keadaan nyala/ON.

GigabitEthernet6/0

Port Status	<input checked="" type="checkbox"/> On
Bandwidth	<input checked="" type="checkbox"/> Auto
<input type="radio"/> 10 Mbps <input type="radio"/> 100 Mbps <input checked="" type="radio"/> 1000 Mbps	
Duplex	<input checked="" type="checkbox"/> Auto
<input type="radio"/> Full Duplex <input checked="" type="radio"/> Half Duplex	
MAC Address	00D0.FFB0.360C
IP Address	
Subnet Mask	
Tx Ring Limit	10

Commands

```

1: Line protocol on Interface GigabitEthernet6/0, changed stat
  
```

7. Atur IP dan DHCP di setiap server. Default Gateway berisi IP Router dan DNS Server berisi IP Server.

Physical	Config	Desktop	Software/Services
<div> <div> GLOBAL Settings Algorithm Settings SERVICES HTTP DHCP TFTP DNS SYSLOG AAA NTP EMAIL FTP INTERFACE GigabitEthernet </div> <div> <div>DHCP</div> <div> Service <input checked="" type="radio"/> On <input type="radio"/> Off </div> <div> Pool Name: serverPool </div> <div> Default Gateway: 192.168.254.1 </div> <div> DNS Server: 128.168.1.1 </div> <div> Start IP Address: 128 168 1 2 </div> <div> Subnet Mask: 255 255 0 0 </div> <div> Maximum number of Users: 65278 </div> <div> TFTP Server: 0.0.0.0 </div> <div> Add Save Remove </div> <div> Pool Name: Default Gateway: DNS Server: Start IP Address: Subnet Mask: Maximum number of Users: TFTP Server: </div> <div> serv... 192.168.... 128.1... 128.168.... 255.2... 65278 0.0.0.0 </div> </div> </div>			

8. Atur IP DHCP di semua PC dan Laptop, kecuali perangkat dibawah LAN Mike.

Physical	Config	Desktop	Software/Services
<div> <div> IP Configuration </div> <div> <input checked="" type="radio"/> DHCP <input type="radio"/> Static </div> <div> IP Address: 128.168.1.3 Subnet Mask: 255.255.0.0 Default Gateway: 192.168.254.1 DNS Server: 128.168.1.1 </div> <div> <div> E Mail PPPoE Dialer Text Editor </div> <div> Web Browser Cisco IP Communicator </div> </div> </div>			

9. Pada Linksys di LAN Mike, atur IP dengan range class yang ditentukan, kemudian matikan DHCP service.

LINKSYS		Firmware Version: v0.93.3	
Setup		Wireless-N Broadband Router WRT300N	
Setup	Wireless	Security	Access Restrictions
Basic Setup	DDNS	MAC Address Clone	Applications & Gaming
Advanced Routing	Administration	Status	
<div> <div> Internet Setup </div> <div> Internet Connection type: Automatic Configuration - DHCP </div> <div> Optional Settings (required by some internet service providers): </div> <div> Host Name: </div> <div> Domain Name: </div> <div> MTU: Size: 1500 </div> </div>			

LINKSYS		Firmware Version: v0.93.3	
Setup		Wireless-N Broadband Router WRT300N	
Setup	Wireless	Security	Access Restrictions
Basic Setup	DDNS	MAC Address Clone	Applications & Gaming
Advanced Routing	Administration	Status	
<div> <div> Network Setup </div> <div> Router IP: </div> <div> DHCP Server Settings: </div> <div> DHCP Server: <input checked="" type="radio"/> Enabled <input type="radio"/> Disabled </div> <div> DHCP Reservation </div> <div> Start IP Address: 192.168.1. 100 </div> <div> Maximum number of Users: 50 </div> <div> IP Address Range: 192.168.1. 100 - 149 </div> <div> Client Lease Time: 0 minutes (0 means one day) </div> </div>			

10. Pada PC dan Laptop di LAN Mike, atur IP secara manual.

11. Pada PC dan Laptop di LAN Mike, tambahkan module Linksys-WPC300N dan koneksikan ke Perangkat Linksys.

12. Buka Server – Config – DNS, dan masukkan parameter berikut:

Name: www.mancung.com (bebas)

Type: A Record

Address: 128.168.1.1 (sesuaikan dengan IP Server)

Physical Config Desktop Software/Services

GLOBAL
Settings
Algorithm Settings
SERVICES
HTTP
DHCP
TFTP
DNS
SYSLOG
AAA
NTP
EMAIL
FTP
INTERFACE
GigabitEthernet

DNS

DNS Service ☒ On ☐ Off

Resource Records

Name Type

Address

Add Save Remove

No.	Name	Type	Details
1	www.mancung.com	A Record	128.198.1.1

DNS Cache

Terapkan pada server lainnya, dengan DNS yang berbeda-beda.

13. Coba test buka HTTP dengan browser. Jika web berhasil dibuka, maka Anda berhasil.

