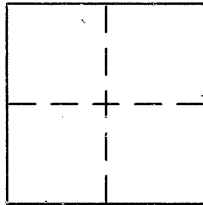


# CORNER RECORD

Document Number CR4188

City of SAN LEANDRO County of ALAMEDA, California

Brief Legal Description INTERSECTION OF SPRINGLAKE DRIVE AND AQUA STEET, IN THE CITY OF SAN LEANDRO  
PER TRACT 3902 (100 M 38)



## CORNER TYPE

Government Corner ☐ Control ☐  
Meander ☐ Property ☐  
Rancho ☐ Other ☒  
Date of Survey MAY 10, 2010

## COORDINATES (Optional)

N. \_\_\_\_\_  
E. \_\_\_\_\_  
Zone \_\_\_\_\_ NAD27 ☐ NAD83 ☐  
NAD83 Epoch \_\_\_\_\_  
Elev. \_\_\_\_\_  
Vert. Datum: NGVD29 ☐ NAVD88 ☐  
Meas. Units: Metric ☐ Imperial ☐

Corner - Left as found ☒ Found and tagged ☐ Established ☐ Reestablished ☐ Rebuilt ☐

Identification and type of corner found: Evidence used to identify or procedure used to establish or reestablish the corner:

FOUND 2-1/2" BRASS DISK STAMPED "CITY OF SAN LEANDRO", IN MONUMENT WELL, WITH PUNCH.

THE DISK WAS REFERENCED OUT IN PREPARATION OF A ROADWAY CONSTRUCTION PROJECT. FOUR  
CUT CROSSES WERE SET AS REFERENCE POINTS AS SHOWN.

A description of the physical condition of the monument as found and as set or reset: MONUMENT WAS FOUND IN GOOD  
CONDITION.

## SURVEYOR'S STATEMENT

This Corner Record was prepared by me or under my direction in conformance with  
the Land Surveyor's Act on JUNE 7 2010

Signed KEVIN J. MARTIN P.L.S. No. 8345

Kier & Wright, Civil Engineers & Surveyors, Inc., Pleasanton, CA

## COUNTY SURVEYOR'S STATEMENT

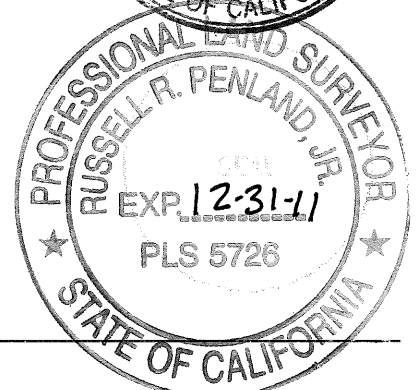
This Corner Record was received 6-15-10

and examined and filed 7-9-10

Signed Russell R. Penland, Jr. P.L.S. or R.C.E. No. 5726

Title COUNTY SURVEYOR

County Surveyor's Comment \_\_\_\_\_

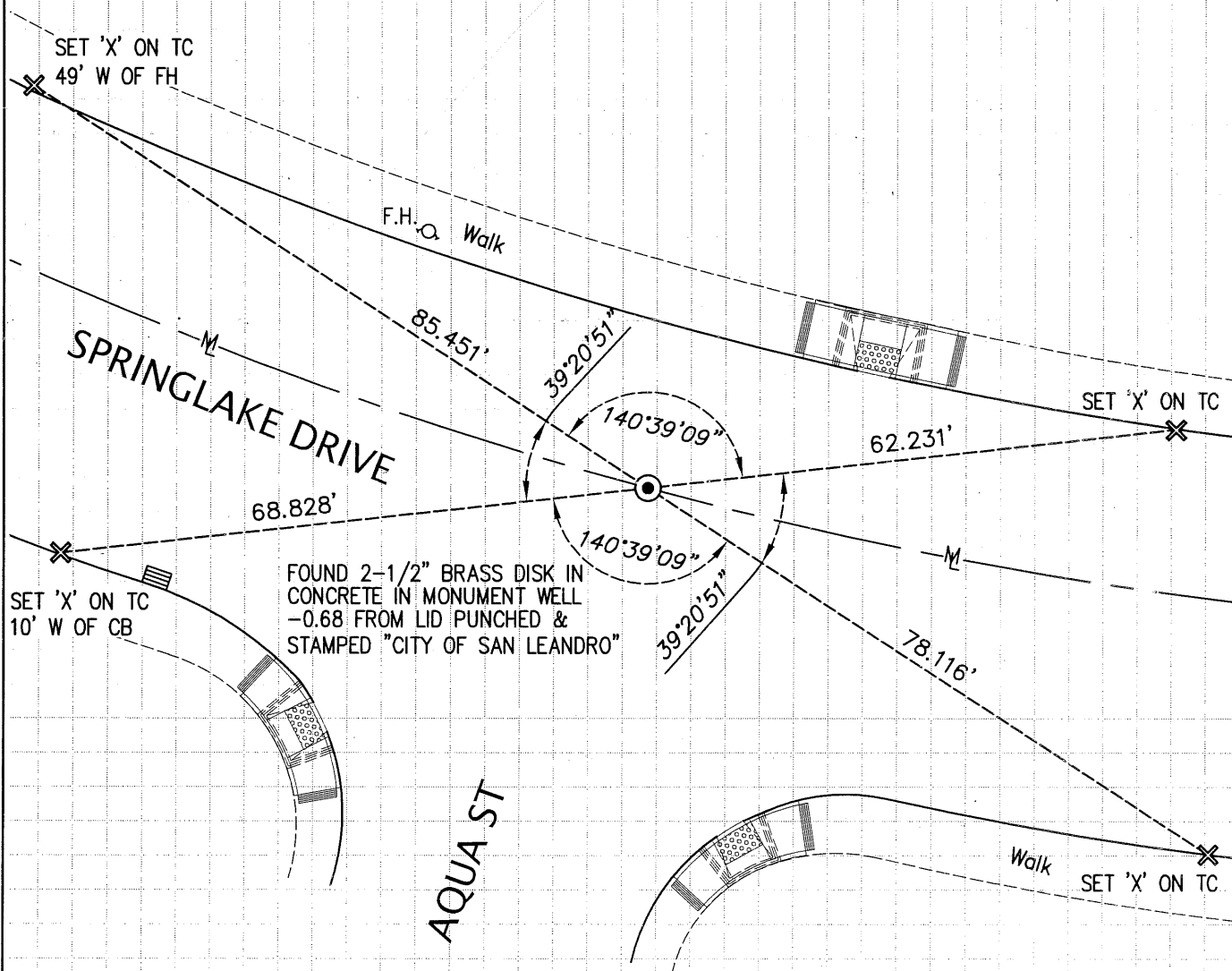


UE4264



0 10' 20' 40'  
Scale 1" = 20 ft

THIS CORNER RECORD IS BEING PREPARED IN  
ACCORDANCE WITH SECTIONS 8765(d) & 8773(c)  
OF THE BUSINESS AND PROFESSIONS CODE,  
PROFESSIONAL LAND SURVEYORS ACT.



KW#A09506-9