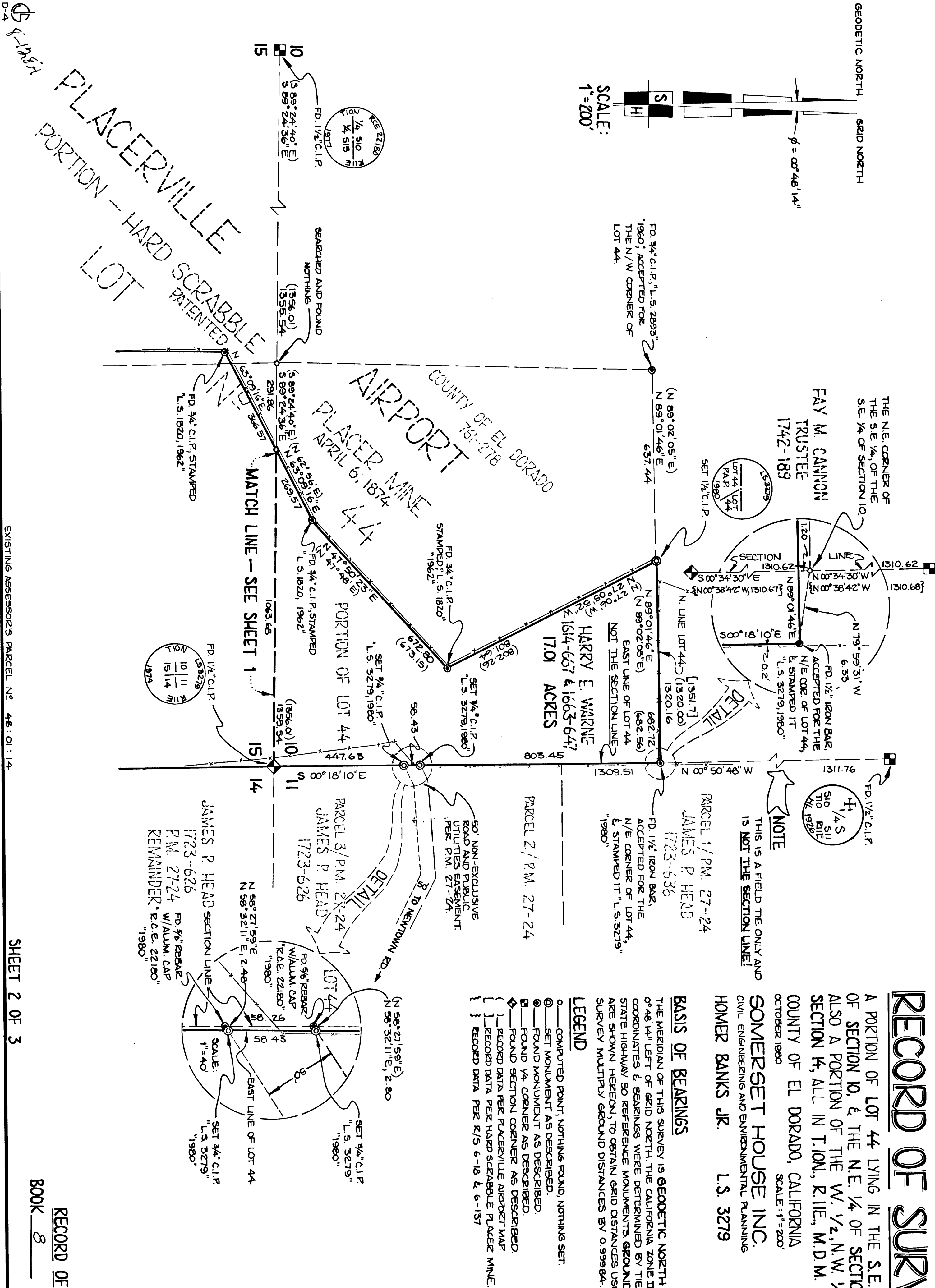


SCALE:
1"=200'



RECORD OF SURVEY

A PORTION OF LOT 44 LYING IN THE S.E. 1/4, S.E. 1/4, OF SECTION 10, & THE N.E. 1/4 OF SECTION 15, & ALSO A PORTION OF THE W. 1/2, N.W. 1/4, OF SECTION 14, ALL IN T.10N., R.11E., M.D.M.

COUNTY OF EL DORADO, CALIFORNIA
OCTOBER 1980
SCALE: 1"=200'
SOMERSET HOUSE INC.
CIVIL ENGINEERING AND ENVIRONMENTAL PLANNING
HOMER BANKS JR. L.S. 3279

BASIS OF BEARINGS

THE MERIDIAN OF THIS SURVEY IS GEODETIC NORTH AND IS 0°46'14" LEFT OF GRID NORTH THE CALIFORNIA ZONE II GRID COORDINATES & BEARINGS WERE DETERMINED BY TIES TO STATE HIGHWAY 50 REFERENCE MONUMENTS. GROUND DISTANCES ARE SHOWN HEREON, TO OBTAIN GRID DISTANCES USED ON THIS SURVEY MULTIPLY GROUND DISTANCES BY 0.99984.

LEGEND

- COMPUTED POINT, NOTHING FOUND, NOTHING SET.
- ⊙ SET MONUMENT AS DESCRIBED.
- ⊙ FOUND MONUMENT AS DESCRIBED.
- ⊙ FOUND 1/4 CORNER AS DESCRIBED.
- ⊙ FOUND SECTION CORNER AS DESCRIBED.
- () RECORDED DATA PER PLACERVILLE AIRPORT MAP.
- [] RECORDED DATA PER HARD SCRABBLE PLACER MINE.
- { } RECORDED DATA PER R/S 6-16 & 6-157

EXISTING ASSESSOR'S PARCEL NO. 46:0:1:14