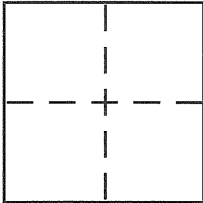


CORNER RECORD

BK 52 PG 17Document Number CR5452City of BERKELEYCounty of ALAMEDA, CaliforniaBrief Legal Description CITY MONUMENT B0343

CORNER TYPE

Government Corner ☐ Control ☒
Meander ☐ Property ☐
Rancho ☐ Other ☐
Date of Survey MARCH 29, 2013

COORDINATES (Optional)

N. _____
E. _____
Zone _____ NAD27 ☐ NAD83 ☐
NAD83 Epoch _____
Elev. _____
Vert. Datum: NGVD29 ☐ NAVD88 ☐
Meas. Units: Metric ☐ Imperial ☐

Corner - Left as found ☒ Found and tagged ☐ Established ☐ Reestablished ☐ Rebuilt ☐

Identification and type of corner found: Evidence used to identify or procedure used to establish or reestablish the corner:
SEE OTHER SIDE

In compliance with Section 8771 of the Professional Land Surveyors' Act, this corner record is being filed to ESTABLISH the position of an existing monument PRIOR to street or highway construction.

A description of the physical condition of the monument as found and as set or reset: _____

SEE OTHER SIDE

SURVEYOR'S STATEMENT

This Corner Record was prepared by me or under my direction in conformance with the Land Surveyor's Act on APRIL 4 2013.
Signed [Signature] P.L.S. or R.C.E. No. 8951



COUNTY SURVEYOR'S STATEMENT

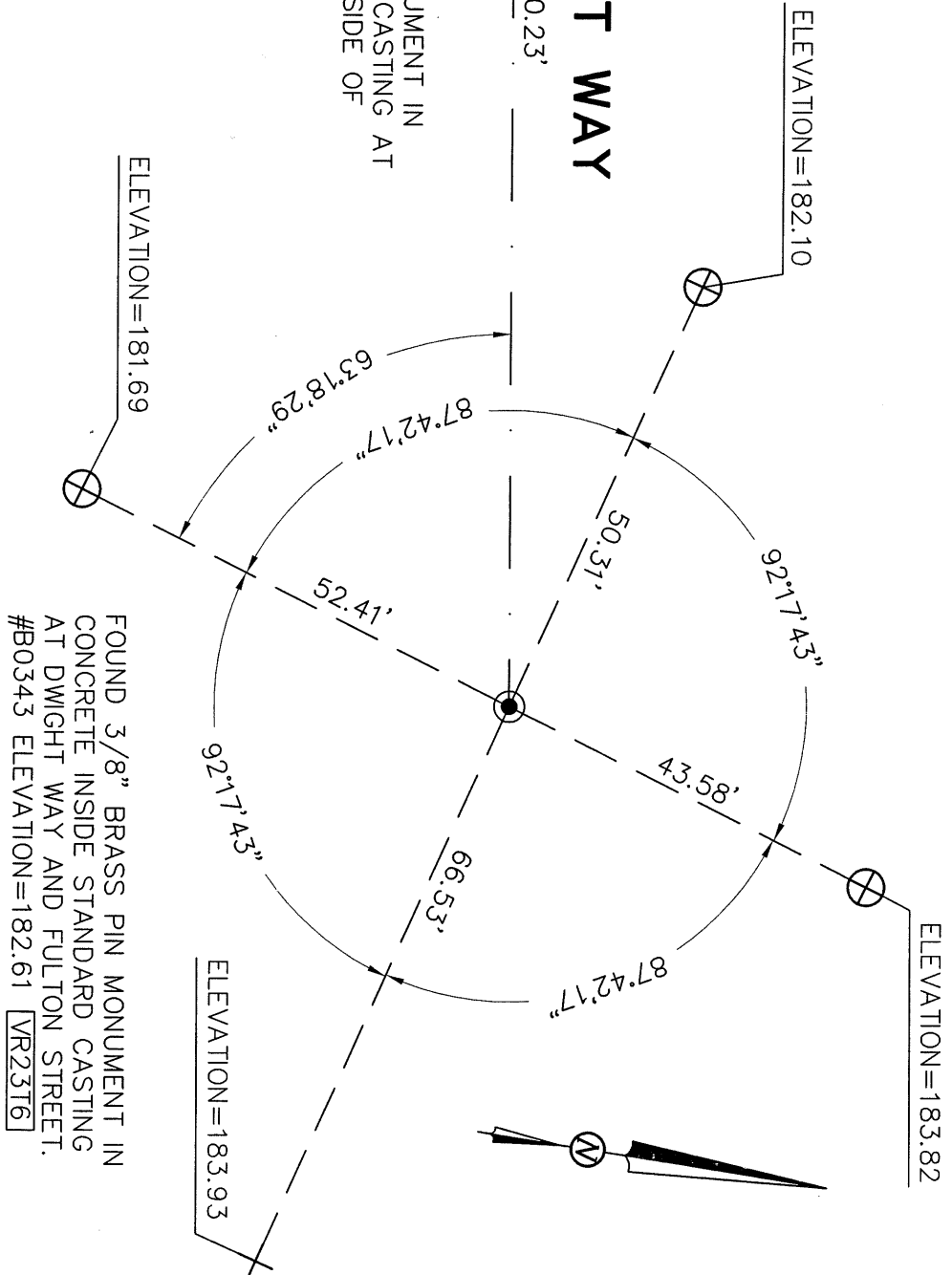
This Corner Record was received 4-8-13
and examined and filed 8-5-13
Signed [Signature] P.L.S. or R.C.E. No. 5726
Title COUNTY SURVEYOR
County Surveyor's Comment _____



VR23TG

DWIGHT WAY

FOUND 1/4" BRASS PIN MONUMENT IN
CONCRETE INSIDE STANDARD CASTING AT
DWIGHT WAY AND THE EAST SIDE OF
SHATTUCK AVENUE. #B0342
ELEVATION=168.37



FOUND 3/8" BRASS PIN MONUMENT IN
CONCRETE INSIDE STANDARD CASTING
AT DWIGHT WAY AND FULTON STREET.
#B0343 ELEVATION=182.61 [VR23T6]

LEGEND

- FOUND CITY MONUMENT AS NOTED
- + CUT CROSS IN CONCRETE CURB
- ⊕ CUT CROSS IN CONCRETE SIDEWALK
- [AA##A#] ALAMEDA COUNTY MONUMENT ID

CORNER RECORD

TO REFERENCE MONUMENT B0343
AT DWIGHT WAY AND FULTON STREET
CITY OF BERKELEY, COUNTY OF ALAMEDA, CALIFORNIA

MARCH 29, 2013

SCALE: 1"=20'