

(For County Use Only)

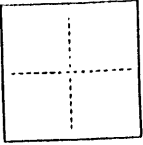
CORNER RECORD

CR 182

COUNTY OF Alameda T. N/A R. N/A N/A MERIDIAN CALIFORNIA

CORNER TYPE: GOV'T. CORNER ☐ MEANDER ☐ RANCHO ☐ CONTROL ☐ OTHER ☒

CORNER IDENTIFICATION — DATE OF VISIT JULY 19 92



Subdivision Lot corners for:
A PORTION OF LOT 33, 25 BM 21

CORNER — LEFT AS FOUND ☐ FOUND AND TAGGED ☐ REESTABLISHED OBLITERATED CORNER ☒ REBUILT ☐

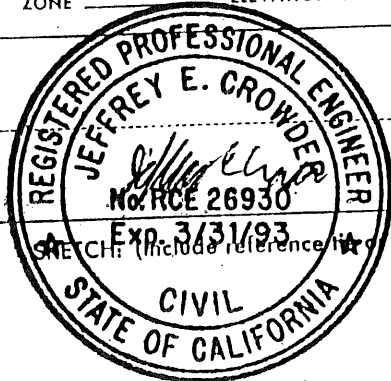
PHYSICAL DESCRIPTION OF CORNER FOUND, EVIDENCE AND METHOD USED TO IDENTIFY OR REESTABLISH

Reestablished from record data and found monuments as shown on the above named map. See sketch below for physical description of monuments found and set.

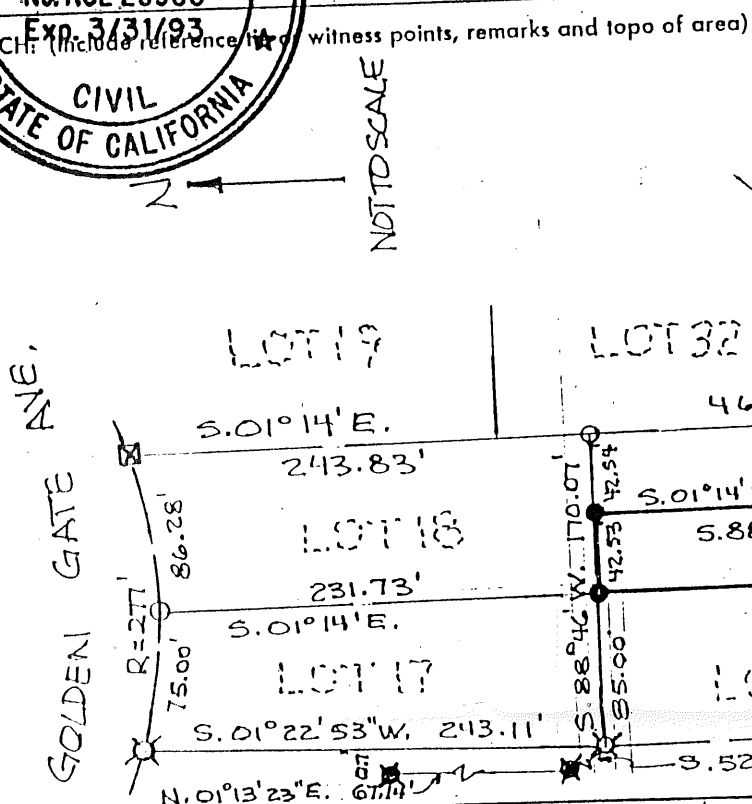
PHYSICAL DESCRIPTION OF MONUMENTS REBUILT OR PERPETUATED

- ☒ FOUND 5/8" REBAR TAGGED L.S. 4961
- ☒ FOUND CHISLED "X"
- ☒ FOUND 5/8" REBAR TAGGED R.C.E. 18546
- ☐ SET 60d NAIL
- ☐ DIMENSION POINT NOTHING FOUND OR SET

CALIFORNIA COORDINATE SYSTEM ORDER: FIRST ☐ SECOND ☐ THIRD ☐
STATIONS USED: NGS (USC & GS) ☐ N ☐ COUNTY ☐ A ☐ STATION ☐ STATION ☐
ZONE ☐ ELEVATION ☐ NORTHINGS (Y) ☐ EASTINGS (X) ☐



(Fold)

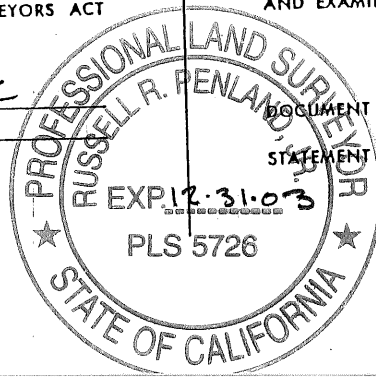


SURVEYOR'S CERTIFICATE

THIS CORNER RECORD WAS PREPARED BY ME OR UNDER MY DIRECTION IN CONFORMANCE WITH THE LAND SURVEYORS ACT ON 7/16 19 92

SIGNED: Jeffrey E. Crowder
L.S. or R.C.E. No.: 26930

SEAL



COUNTY SURVEYOR'S CERTIFICATE

THE CORNER RECORD WAS RECEIVED 7-6 19 92
AND EXAMINED AND FILED 8-21-2000

BY: Russell R. Penland
TITLE: Deputy County Surveyor

DOCUMENT No. _____

STATEMENT ON BACK OF SHEET

YES ☒ NO ☐

C2182

COUNTY SURVEYOR'S COMMENT:

SINCE THIS CORNER RECORD ESTABLISHES ONE OR MORE POINTS OR LINE NOT SHOWN ON ANY SUBDIVISION MAP, OFFICIAL MAP, OR RECORD OF SURVEY, THE COUNTY SURVEYOR IS OF THE OPINION THAT A RECORD OF SURVEY SHOULD ALSO BE FILED.

SEE SECTION 8762 (e) OF THE LAND SURVEYORS' ACT.

A FILED COPY WAS TRANSMITTED TO THE SURVEYOR ON
SEE SECTION 8773.2 OF THE L.S. ACT.

P 2.

Oakland