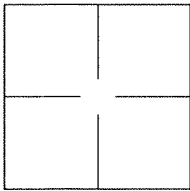


# CORNER RECORD

Agency Index BK 139 PG 73Document Number CR 14617City of UNINCORPORATED AREACounty of ALAMEDA, CaliforniaBrief Legal Description ALAMEDA COUNTY MONUMENTS ON PLACER DRIVE

## CORNER TYPE

Government Corner ☐ Control ☐  
Meander ☐ Property ☐  
Rancho ☐ Other ☒

Date of Survey 2020-07-30

## COORDINATES (Optional)

N. \_\_\_\_\_ E. \_\_\_\_\_

Elevation \_\_\_\_\_

Units Metric ☐ U.S. Survey Foot ☐

Horizontal Datum \_\_\_\_\_

Zone \_\_\_\_\_ Epoch Date \_\_\_\_\_

Vertical Datum: \_\_\_\_\_

☐ Complies with Public Resources Code §§8801-8819☐ Complies with Public Resources Code §§8890-8902PLS Act Ref.: ☐ 8765(d) ☒ 8771 ☐ 8773

Other: \_\_\_\_\_

Corner/  
Monument: ☒ Left as found ☐ Established ☐ Rebuilt ☒ Pre-Construction  
☐ Found and tagged ☐ Reestablished ☒ Referenced ☐ Post-Construction

Narrative of corner identified and monument as found and set or reset:

☒ See sheet #2 for description(s):

ALAMEDA COUNTY MONUMENTS ON PLACER DRIVE

## SURVEYOR'S STATEMENT

This Corner Record was prepared by me or under my direction in conformance with

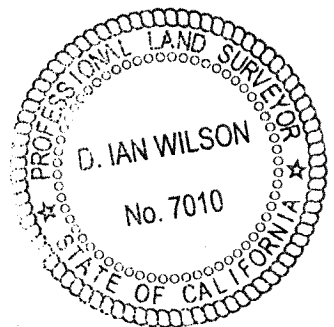
the Professional Land Surveyor's Act on 30 November, 2020.Signed [Signature] P.L.S. or R.C.E. No.: 8040

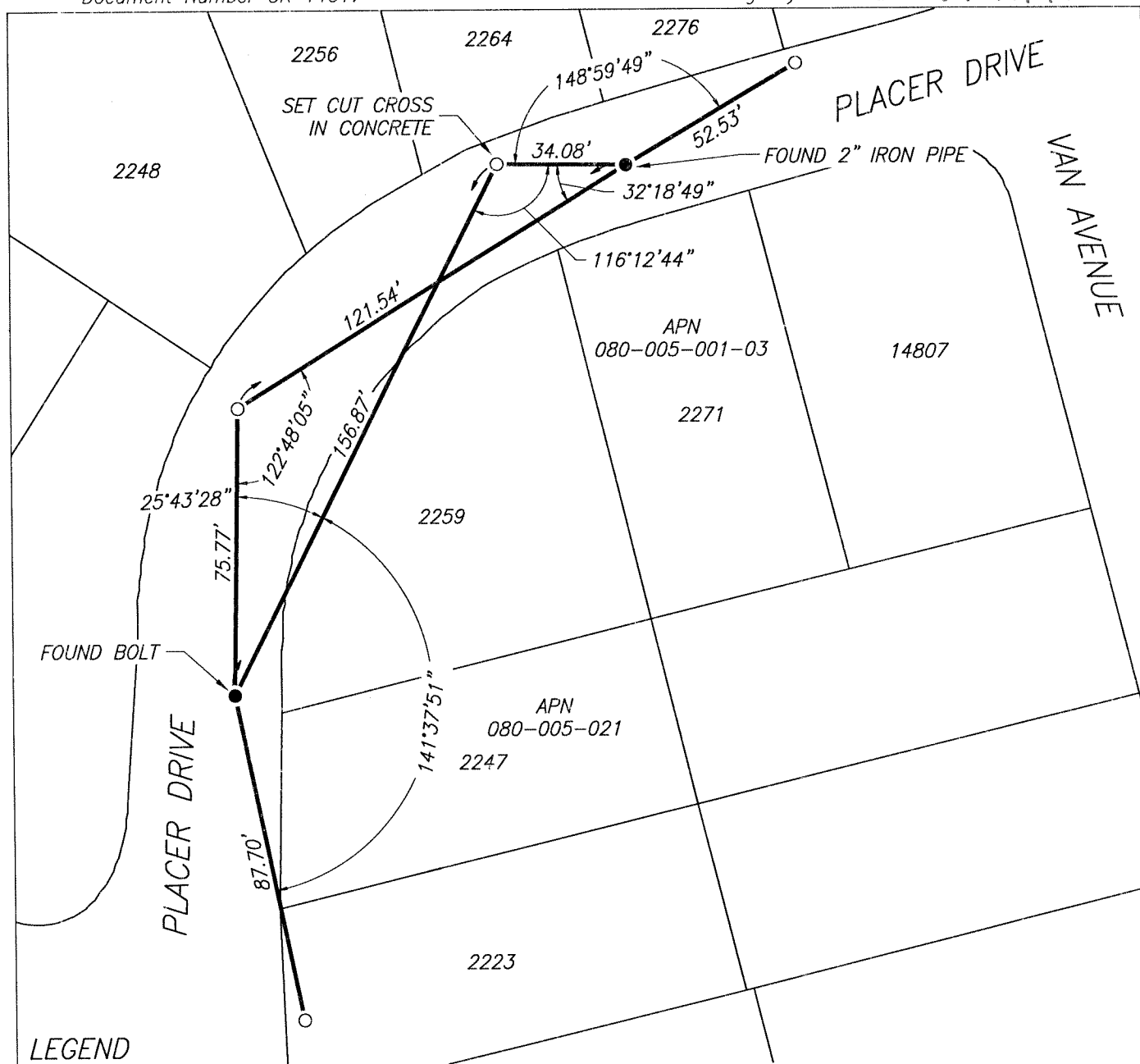
## COUNTY SURVEYOR'S STATEMENT

This Corner Record was received \_\_\_\_\_, \_\_\_\_\_ and examined

and filed AUG 04 2021.Signed D. Ian Wilson P.L.S. or R.C.E. No.: 7010Title ALAMEDA COUNTY SURVEYOR

County Surveyor's Comment





### LEGEND

- FOUND MONUMENT AS NOTED, PER (A)
- SET MAG NAIL IN ASPHALT
- 2259 REFERENCE STREET ADDRESS
- APN ASSESSORS PARCEL NUMBER

### REFERENCES

- (A) TRACT MAP OF HILLCREST KNOLLS, FILED FOR RECORD ON JANUARY 13, 1925, IN BOOK 4 OF TRACT MAPS, AT PAGE 56, ALAMEDA COUNTY RECORDS

SCALE  1" = 40'