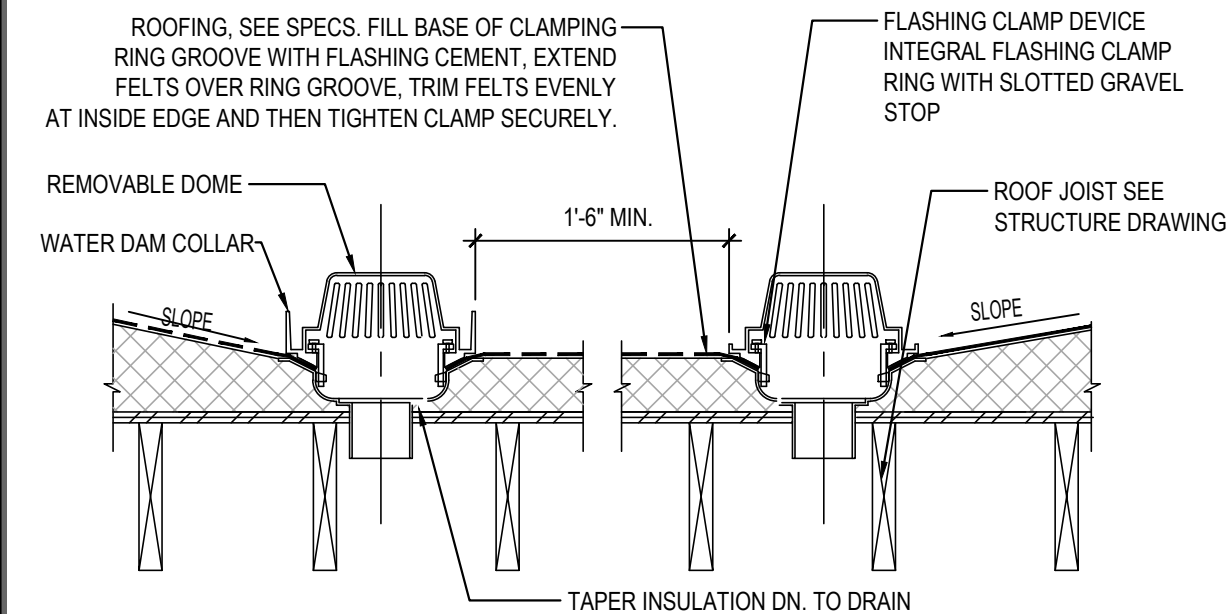


NOT USED

16

Scale= 1/4" = 1'-0"

A-107



C OVERFLOW DRAIN

B ROOF DRAIN

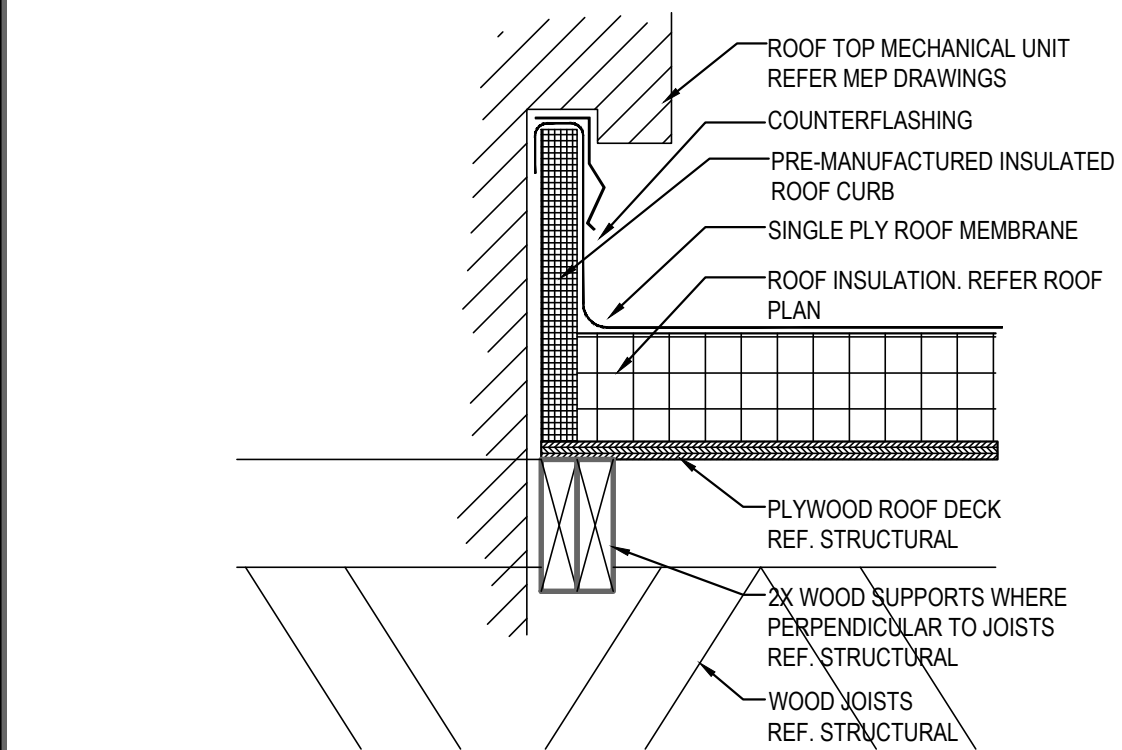
NOTE: WHERE INSULATION IS SPECIFIED PROVIDE AN ADJUSTABLE OVERFLOW DRAIN - CAST IRON BODY - POLYETHYLENE DOME

ROOF DRAIN DETAIL

15

Scale= NTS

A-107

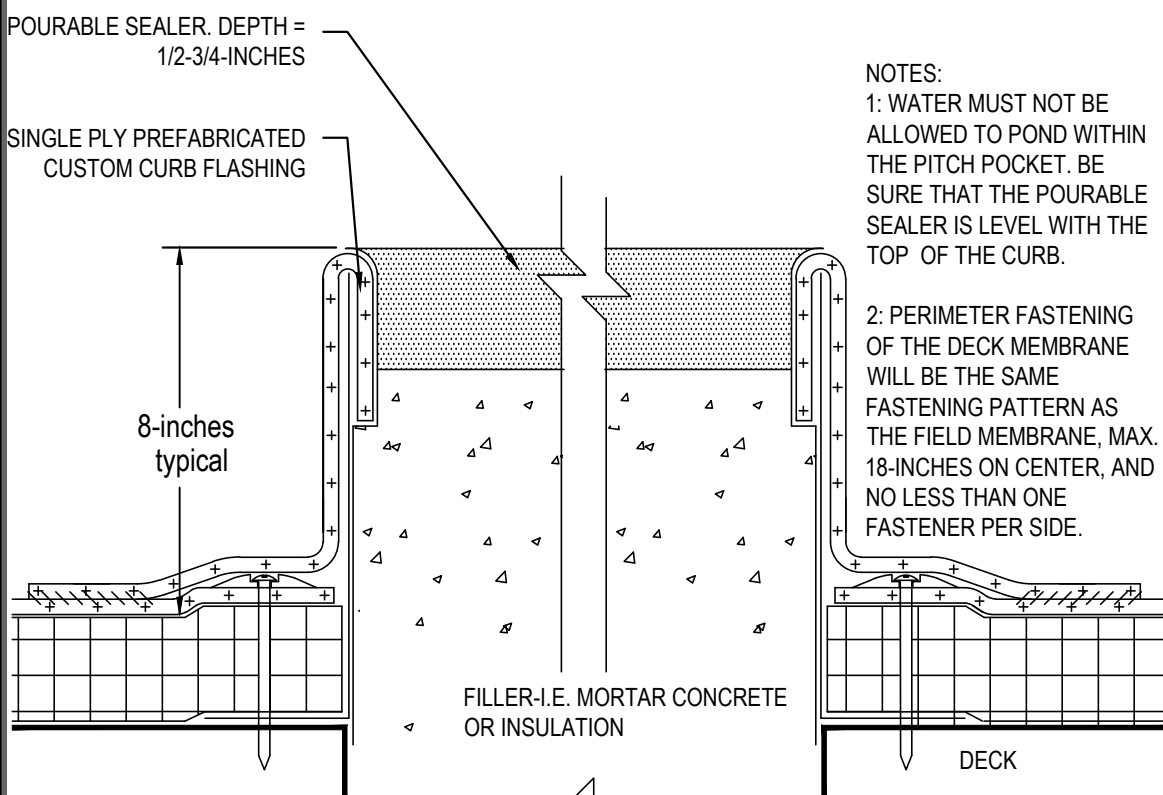


MECHANICAL CURB DETAIL

18

Scale= NTS

A-107

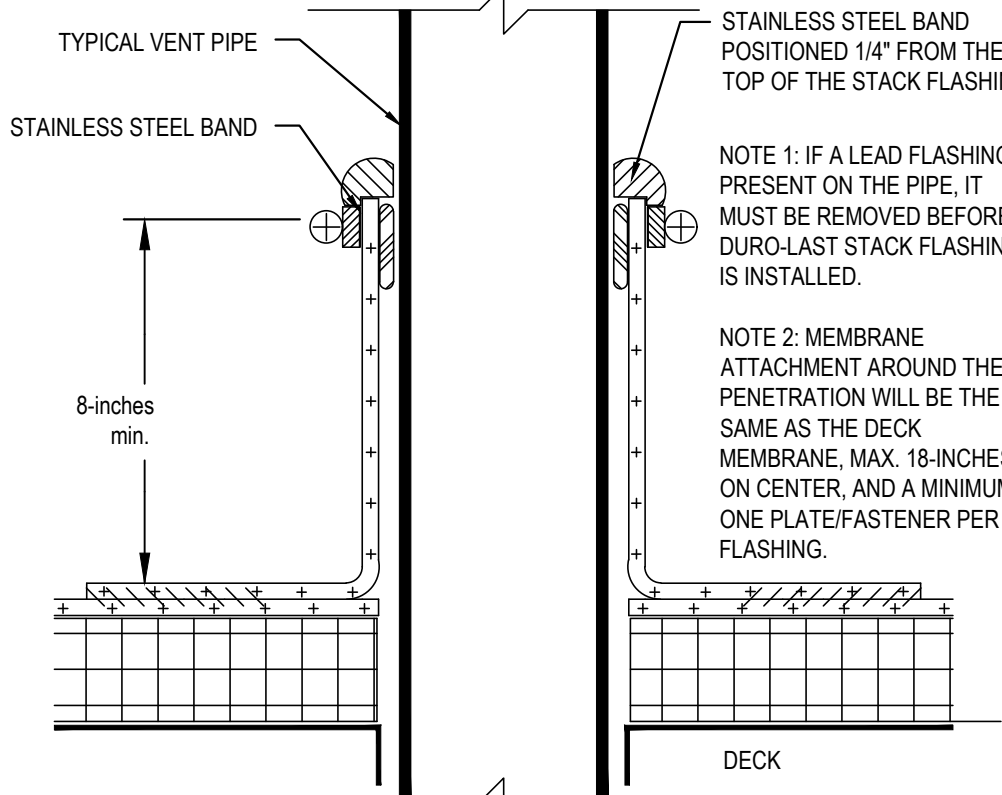


PITCH POCKET DETAIL

17

Scale= NTS

A-107

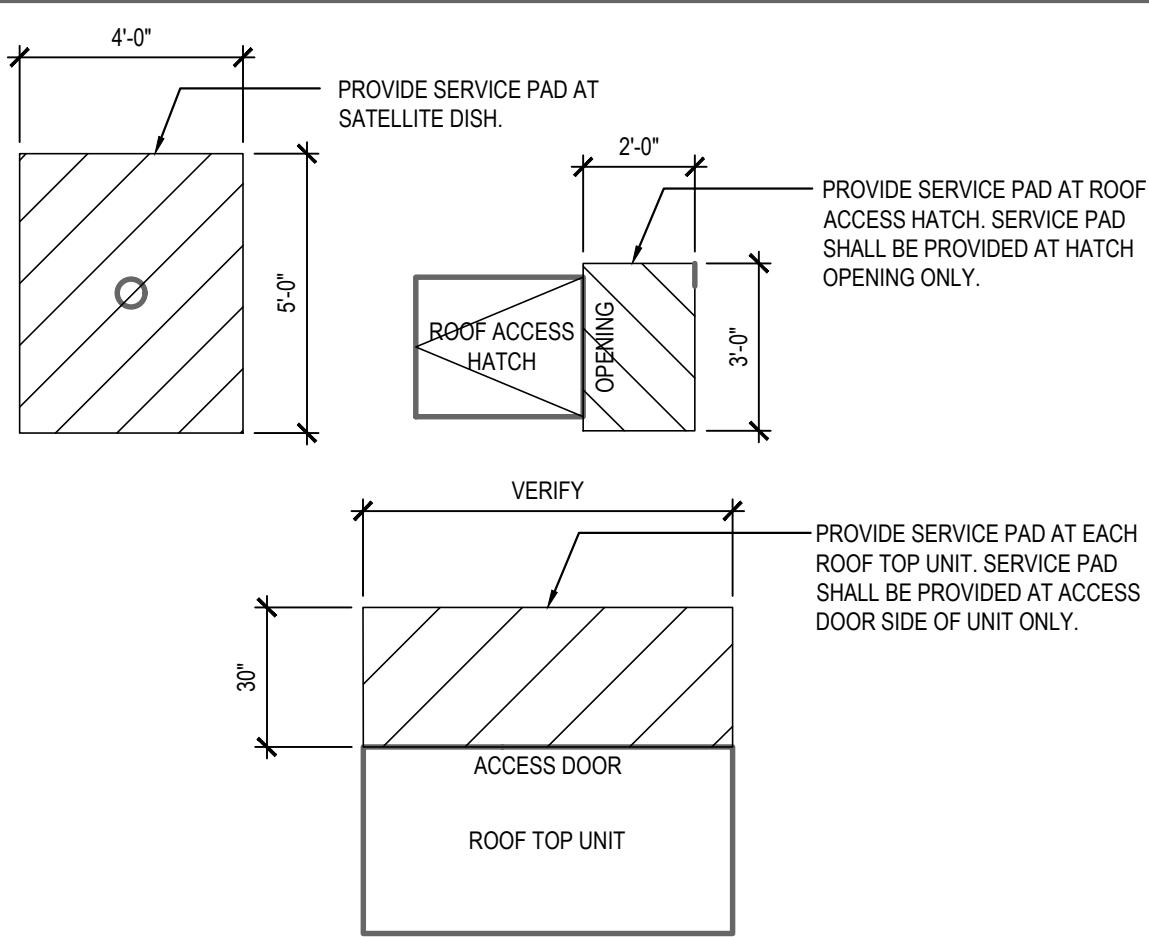


PLUMBING VENT DETAIL

13

Scale= NTS

A-107



ROOF WALKWAY PAD DETAIL

4

Scale= NTS

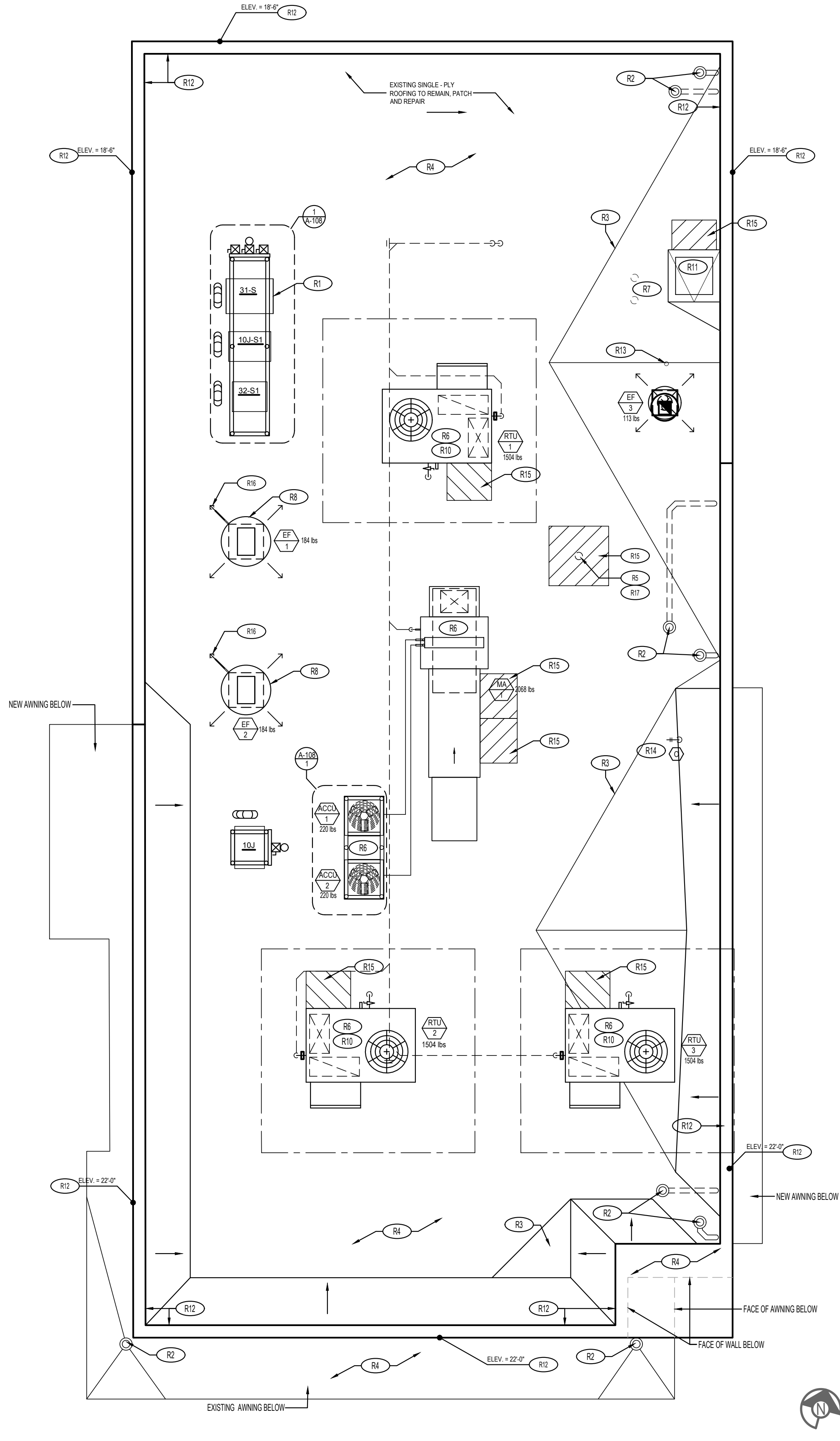
A-107

ROOF PLAN NOTES:

- NOT USED
- 4'-6" INDICATES APPROXIMATE ELEVATION OF THE TOP OF ROOF PLYWOOD SHEATHING AT PLYWOOD CRICKET. SEE TRUSS DRAWINGS FOR ACTUAL ROOF SLOPE. ALL ROOF ELEVATIONS ARE GIVEN FROM TOP OF INTERIOR CONCRETE FLOOR SLAB (U.O.N.). WHEN FLOOR SLAB STEPS, ELEVATIONS ARE REFERENCED FROM THE HIGHEST FINISHED FLOOR.
- ANY PROJECTION THROUGH ROOF SHALL BE DETAILED PER THE SINGLE PLY ROOFING MANUFACTURER'S RECOMMENDED DETAILS.
- ALL EXHAUST FANS AND AIR CONDITIONING EQUIPMENT DESIGNATIONS ARE TAKEN FROM MECHANICAL DRAWINGS.
- NOT USED.
- CONTRACTOR SHALL CONFIRM THAT ALL AREAS OF ROOF ARE PROVIDED WITH POSITIVE DRAINAGE.
- ALL ROOF PENETRATIONS FOR PLUMBING VENTS, POWER CONDUITS, ETC. SHALL BE FLASHED PER BUILDING SPECIFICATIONS AND DETAILS. VENTS SHALL BE AT LEAST 10'-0" HORIZONTAL OR 3'-0" ABOVE OUTSIDE AIR INTAKES (A/C UNITS, MAKE-UP AIR).
- CONTRACTOR BE RESPONSIBLE FOR COORDINATION OF SIZES AND LOCATIONS OF ROOF OPENINGS (VENTS, DUCTS, ETC.), PLATFORMS, BASES ETC. COORDINATE SIZES OF MECHANICAL EQUIPMENT PLATFORMS, BASES, ROOF EQUIPMENT PLATFORMS AND OPENINGS SHOWN ON DRAWINGS WITH EQUIPMENT BEING SUPPLIED. SEE TYPICAL DETAILS ON THIS SHEET ALSO COORDINATE INSTALLATION OF LIGHTING, POWER, CONVENIENCE OUTLETS ETC.
- FOR ALL STRUCTURAL FRAMING MEMBERS, SIZES, AND ADDITIONAL INFORMATION, SEE STRUCTURAL DRAWINGS.
- PROVIDE ROOF CRICKET AT MECHANICAL EQUIPMENT TO ASSURE POSITIVE ROOF DRAIN.
- ALL ROOF EQUIPMENT TO BE SCREENED FROM PUBLIC VIEW.
- ROOFTOP EQUIPMENT TO BE LOCATED AT LEAST 42" MINIMUM FROM TOWERS FOR SERVICING
- PROVIDE SERVICE PAD AT EACH UNIT ONLY AT SERVICE ACCESS DOOR
- ALL GAS PIPING ON ROOF TO BE PAINTED SAFETY YELLOW

ROOF PLAN KEYNOTES:

- R1 REF: EQUIPMENT RACK (SEE SHEET A-108)
- R2 EXISTING ROOF DRAIN AND OVERFLOW DRAIN. ENSURE WATER TIGHT. G.C. TO ENSURE DRAINS ARE NOT CLOGGED AND REMOVE DEBRIS FROM LINES.
- R3 TAPERED ROOF INSULATION CRICKET TO ASSURE POSITIVE ROOF DRAINAGE
- R4 EXISTING SINGLE - PLY ROOFING TO REMAIN. PATCH & REPAIR.
- R5 GALV RIGID METAL CONDUIT & WEATHERHEAD AND PULL STRING FOR SATELLITE CABLE. EXACT LOCATION ON ROOF TO BE COORDINATED WITH PANDA PROJECT MANAGER AND SERVICE PROVIDER. REFER TO E-104/A-108 FOR SIZE AND INSTALLATION.
- R6 ROOF TOP MECHANICAL UNIT SEE MECHANICAL DRAWING
- R7 WATER HEATER VENT - SEE MEP PLANS. OFFSET VENTS AS REQUIRED TO MAINTAIN MIN. 10'-0" AWAY FROM AIR INTAKE SYSTEMS ON EQUIPMENT.
- R8 EXHAUST FAN
- R10 RE-USE EXISTING CURB. PROVIDE CURB ADAPTOR. SEE MECHANICAL.
- R11 EXISTING ROOF ACCESS HATCH
- R12 TOP OF PARAPET
- R13 PLUMBING VENT 13 A-107
- R14 WEATHER PROOF HYDRANT
- R15 PROVIDE WALK-WAY PAD AS SHOWN. REFERENCE DETAIL 4/A-107
- R16 POWER SUPPLY LOCATION FOR ROOFTOP EXHAUST FANS FOR KITCHEN HOOD
- R17 SATELLITE. COORDINATE WITH RTV FOR FINAL LOCATION



ROOF PLAN

1

Scale= 3/16" = 1'-0"

A-107



PANDA EXPRESS, INC.
1683 Walnut Grove Ave.
Rosemead, California
91770

Telephone: 626.799.9898
Facsimile: 626.372.8288

All ideas, designs, arrangement and plans indicated or represented by this drawing are the property of Panda Express Inc. and were created for use on this specific project. None of these ideas, designs, arrangements or plans may be used by or disclosed to any person, firm, or corporation without the written permission of Panda Express Inc.

REVISIONS:

ISSUE DATE:

1st	DEVELOPER REVIEW	07.26.19
2nd	SITE PLAN SUBMITTAL	08.26.19
3rd	SITE COMMENTS	09.05.19
4th	ISSUE FOR PERMIT	10.01.19
5th	ISSUE FOR BID	11.07.19

DRAWN BY: PM / KL / EA

PANDA PROJECT #: S8-20-D7163

ARCH PROJECT #: 19027



Heights Venture
ARCHITECTURE + DESIGN

HOUSTON 1111 North Loop West, Suite 800 Houston, Texas 77028 713.889.1163 V
DALLAS 5741 Legacy Drive, Suite 320 Plano, Texas 75024 972.490.7292 V

PANDA EXPRESS

2096 INTERSTATE DR.
OPELIKA, AL 36801
3600 FSDT

TWW REMODEL

A-107

ROOF PLAN

TRUE WARM & WELCOME

BID ISSUE