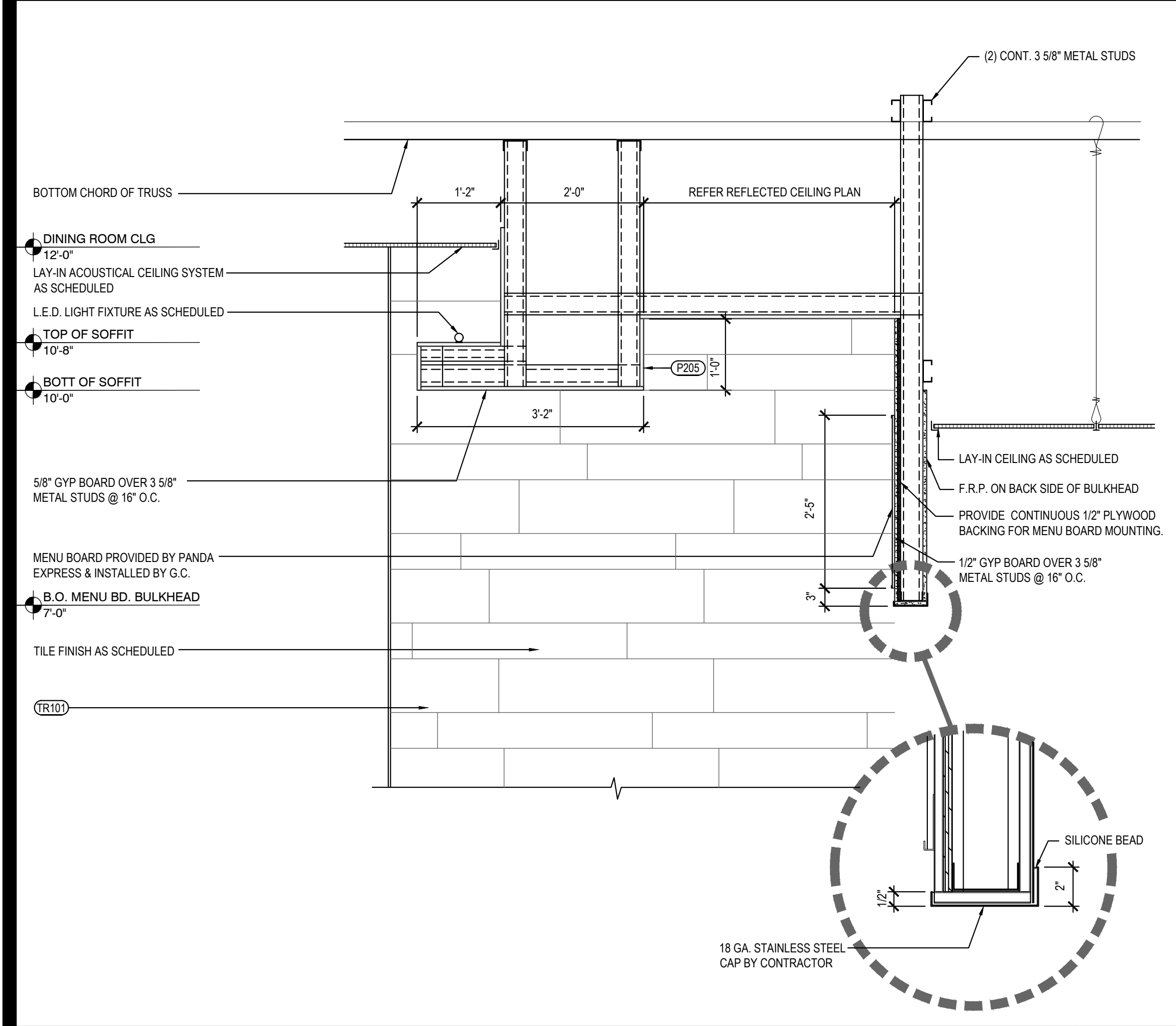
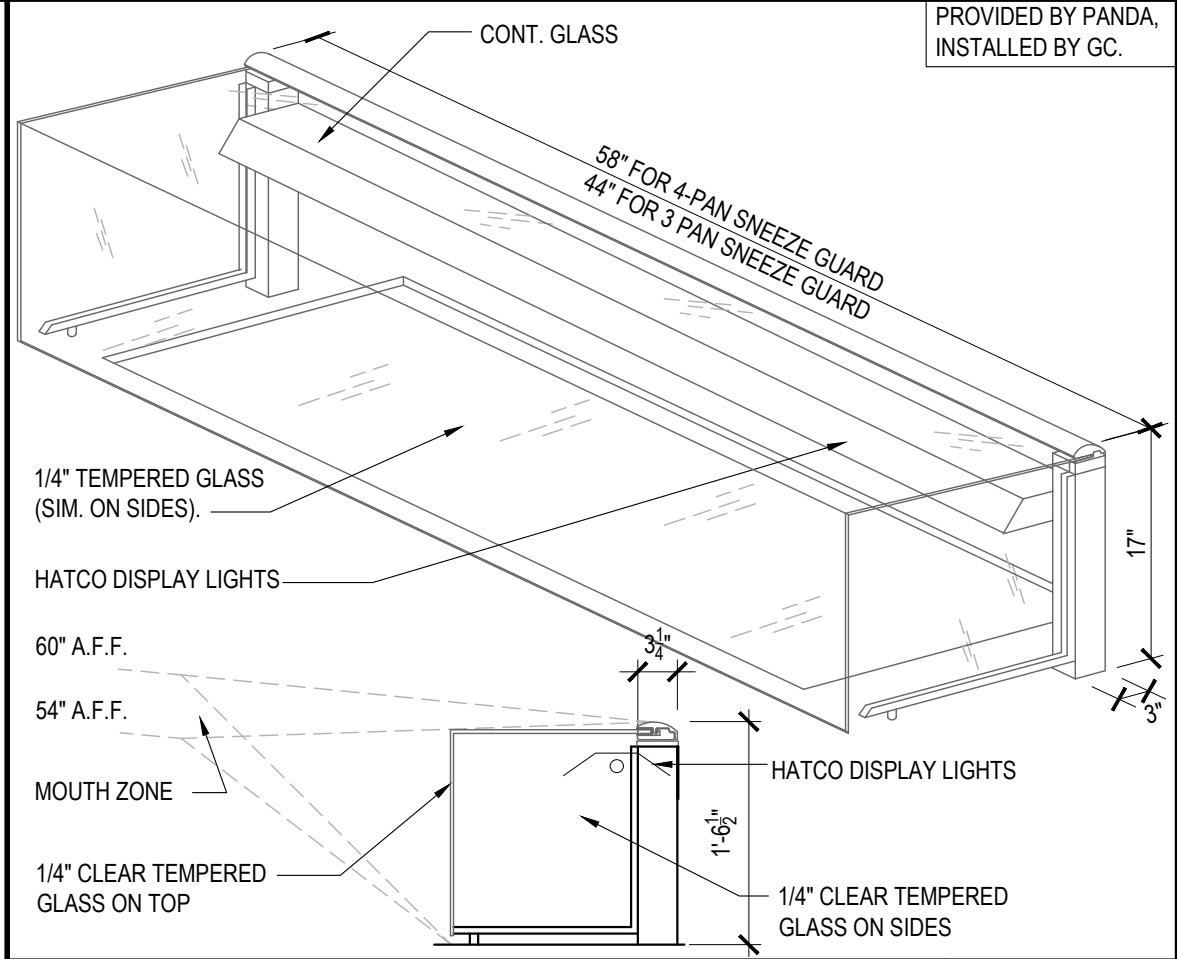


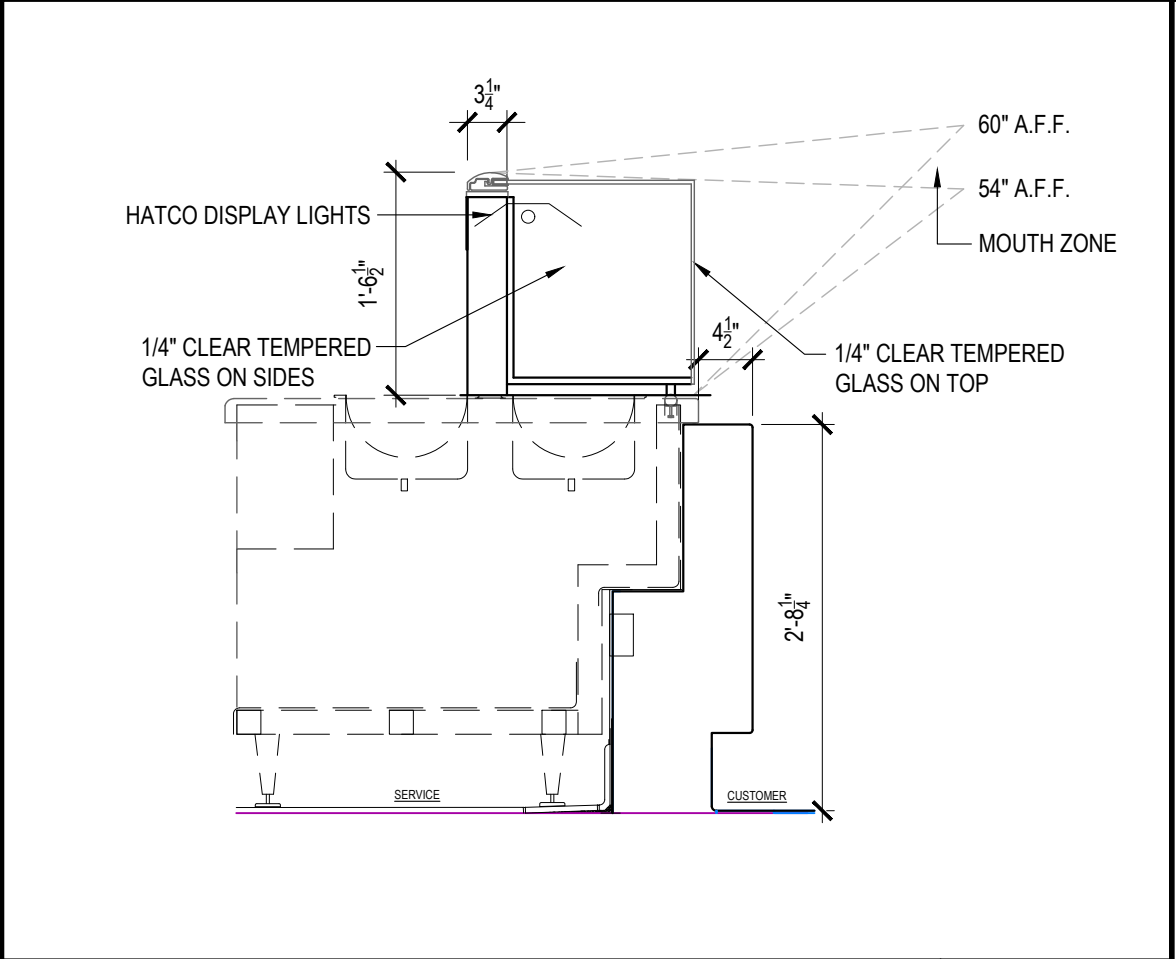
BEVERAGE STATION COUNTER DETAIL	10	BACK OF HOUSE VALENCE DETAIL	9
Scale= 3/4" = 1'-0"	A-402	Scale= 3/4" = 1'-0"	A-402



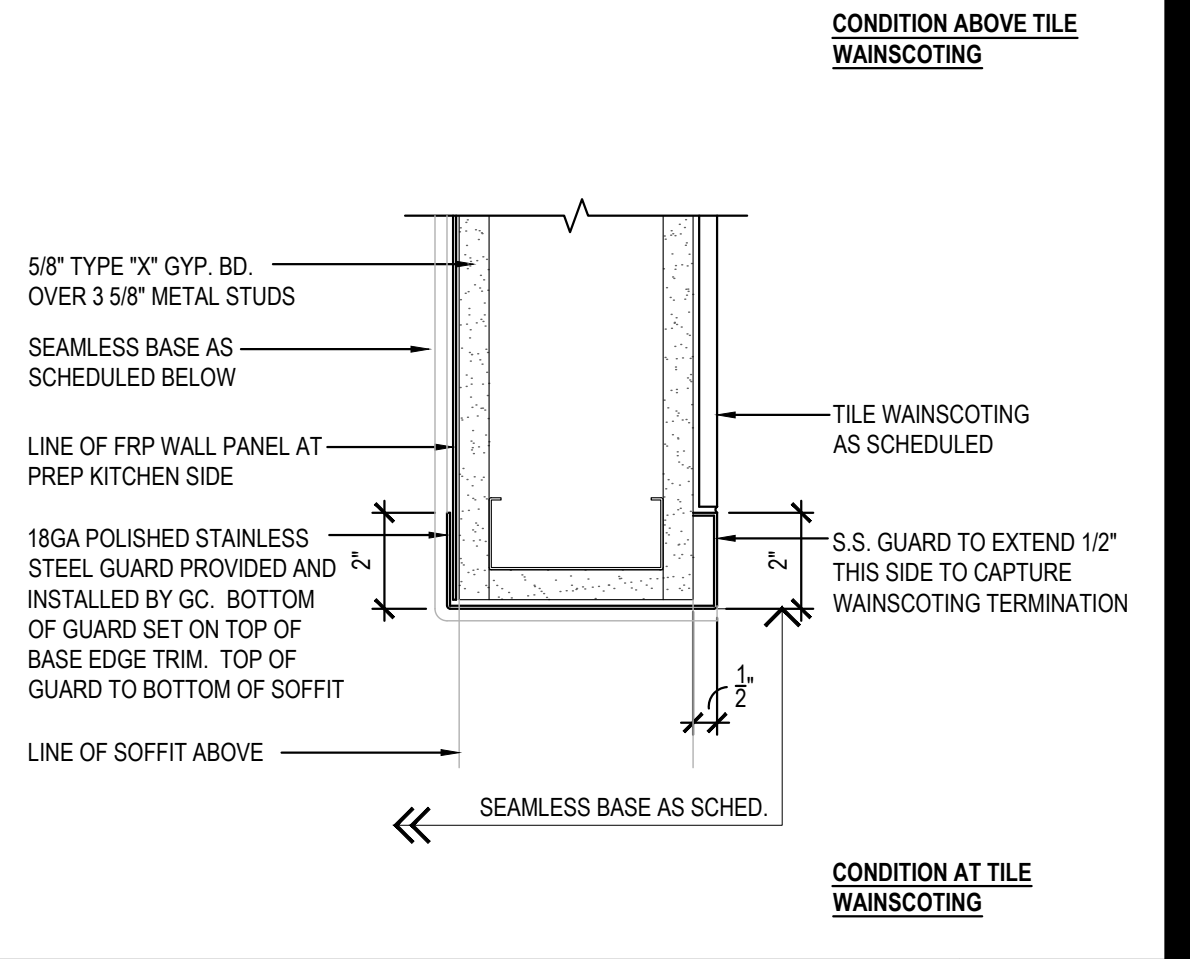
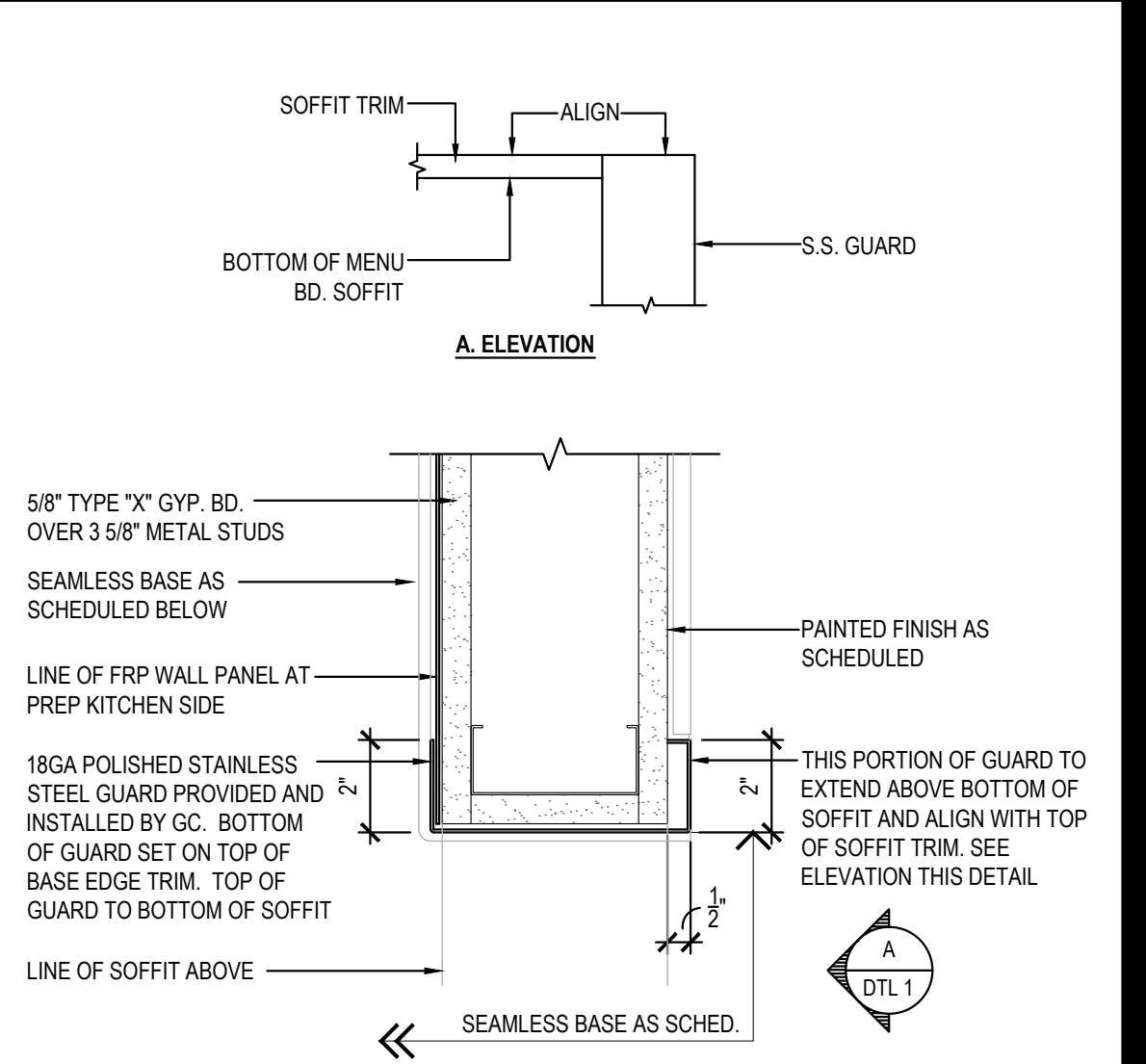
SERVICE COUNTER SOFFIT DETAILS	8
Scale= 3/4" = 1'-0"	A-402



SNEEZE GUARD DETAIL	6
Scale= NTS	A-402



SNEEZE GUARD DETAIL	5
Scale= NTS	A-402



CORNER GUARD DETAIL	1
Scale= 3" = 1'-0"	A-402

NOT USED	4
Scale= 1 1/2" = 1'-0"	A-402

NOT USED	3
Scale= 1 1/2" = 1'-0"	A-402



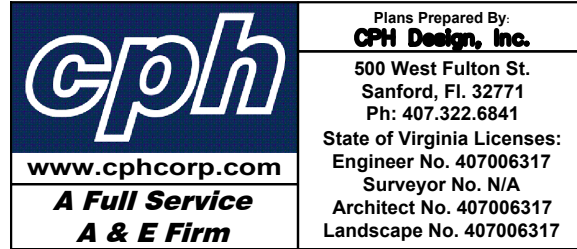
PANDA RESTAURANT GROUP INC.
1683 Walnut Grove Ave.
Rosemead, California
91770
Telephone: 626.799.9898
Facsimile: 626.372.8288

All ideas, designs, arrangement and plans indicated or represented by this drawing are the property of Panda Express Inc. and were created for use on this specific project. None of these ideas, designs, arrangements or plans may be used by or disclosed to any person, firm, or corporation without the written permission of Panda Express Inc.

REVISIONS:
1 COMMENTS/OWNER REV 04-07-21

ISSUE DATE:
1 CHECK SET 10-23-20
2 PERMIT SET 03-15-21
3 BID SET 04-02-21

DRAWN BY: JO
PANDA PROJECT #: S4-21-D7864
ARCH PROJECT #: P7350



PANDA EXPRESS
END CAP - TENANT BUILD OUT
4501 S LABURNUM AVE
RICHMOND VA, 23231

A-402
ARCHITECTURAL DETAILS