

# CORNER RECORD

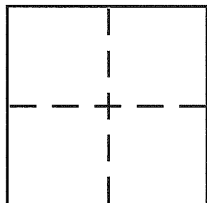
Bk 43 Pg 34

Document Number CR 4753

City of BERKELEY

County of ALAMEDA, California

Brief Legal Description LOT 14, BLK. 5, RESUB. OF N. Cragmont (24M74)



## CORNER TYPE

Government Corner ☐ Control ☐  
Meander ☐ Property ☒  
Rancho ☐ Other ☐  
Date of Survey AUG. 1, 2011

## COORDINATES (Optional)

N. \_\_\_\_\_  
E. \_\_\_\_\_  
Zone \_\_\_\_\_ NAD27 ☐ NAD83 ☐  
NAD83 Epoch \_\_\_\_\_  
Elev. \_\_\_\_\_  
Vert. Datum: NGVD29 ☐ NAVD88 ☐  
Meas. Units: Metric ☐ Imperial ☐

Corner - Left as found ☐ Found and tagged ☐ Established ☒ Reestablished ☐ Rebuilt ☐

Identification and type of corner found: Evidence used to identify or procedure used to establish or reestablish the corner:

FOUND CONCRETE MONUMENT

A description of the physical condition of the monument as found and as set or reset:

SET 5/8" REBAR WITH PLASTIC CAP, LS 4961  
SET 2" HUB WITH BRASS TAG, LS 4961  
SET BRASS TAG, LS 4961

## SURVEYOR'S STATEMENT

This Corner Record was prepared by me or under my direction in conformance with

the Land Surveyor's Act on DEC. 12 2011

Signed Robt J. Brunel P.L.S. or R.C.E. No. 4961

## COUNTY SURVEYOR'S STATEMENT

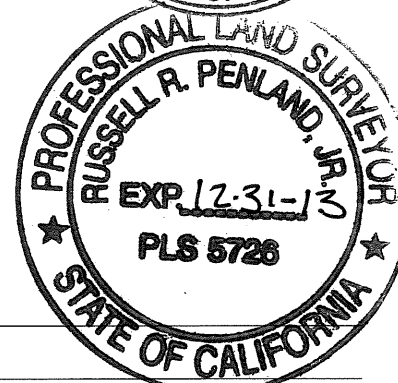
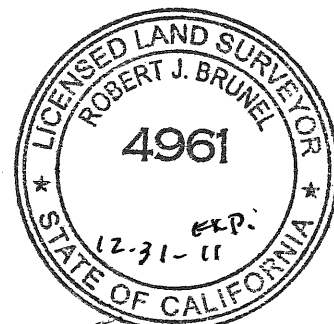
This Corner Record was received 12-16-2011

and examined and filed 2-9-2012

Signed Russell R. Penland P.L.S. or R.C.E. No. 5726

Title COUNTY SURVEYOR

County Surveyor's Comment



HN 2786

# CORNER RECORD

LOT 14, BLOCK 5  
RESUB. OF NORTH CRAGMONT (24 M 74)  
LOCATED AT 925 SPRUCE STREET  
CITY OF BERKELEY, COUNTY OF ALAMEDA, CALIFORNIA

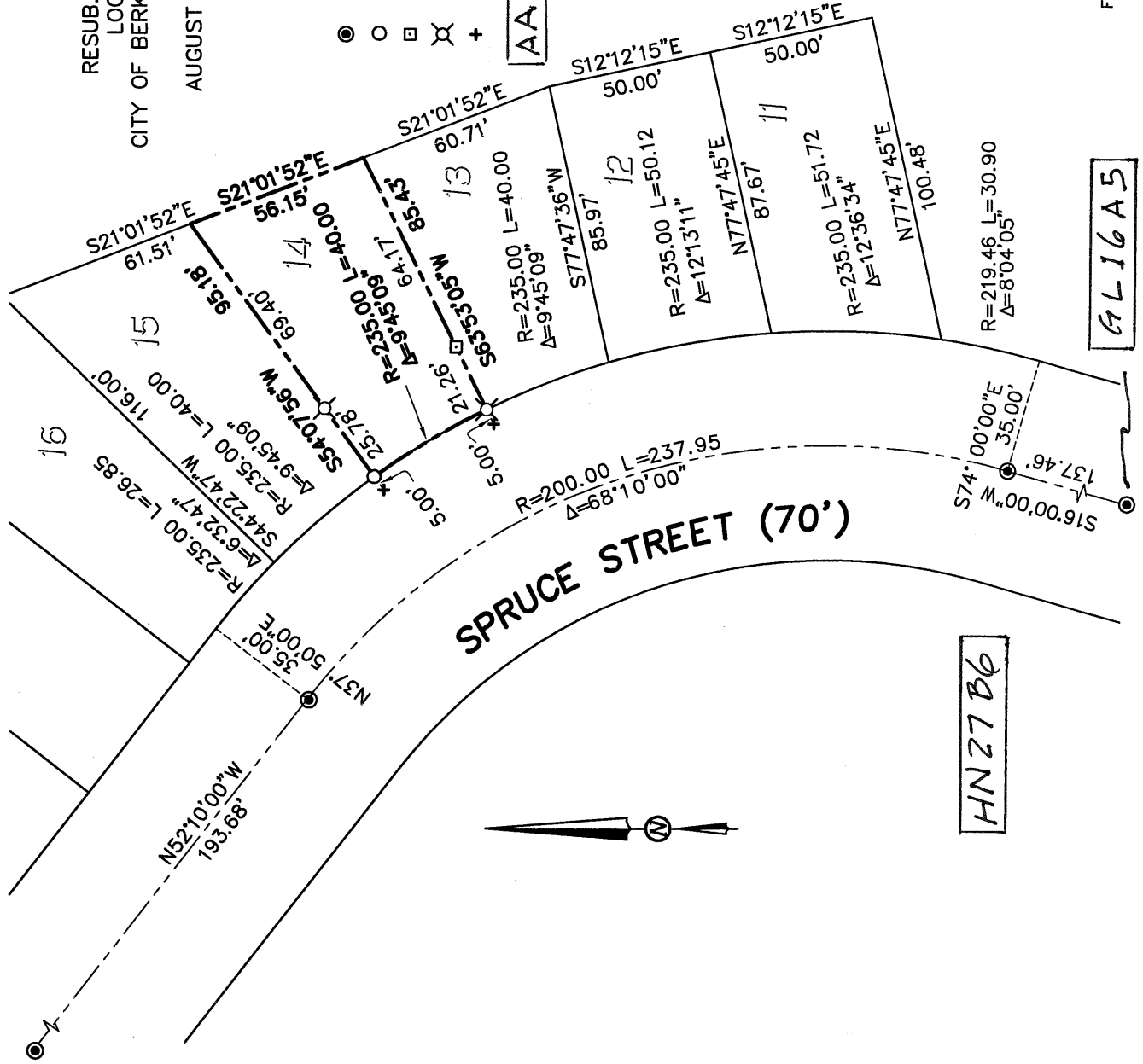
AUGUST 1, 2011 SCALE: 1" = 50'

## LEGEND

- FOUND CONCRETE MONUMENT
- SET 5/8" REBAR WITH PLASTIC CAP, LS 4961
- SET 2" HUB WITH BRASS TAG, LS 4961
- ✕ SET BRASS TAG, LS 4961
- + SET CROSS, TAGGED LS 4961

AA#A#

AIA. CO. MON. ID



MORAN ENGINEERING, INC.

CIVIL ENGINEERS \ LAND SURVEYORS  
1930 SHATTUCK AVENUE, SUITE A  
BERKELEY, CALIFORNIA 94704  
(510) 848-1930

F.B. NO. 576

SPRUCE CR.DWG

JOB NO. 11-8103

GL16A5

HN27B6