

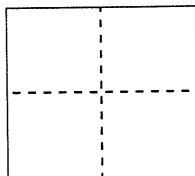
CORNER RECORD

Document Number **CR 9337**

City of Oakland (APN 37-2552-19)

County of Alameda, California

Brief Legal Description Monument at the end of Steele Street near the intersection with Buell Street, near 3746 Buell Street



CORNER TYPE

Government Corner	<input type="checkbox"/>	Control	<input checked="" type="checkbox"/>
Meander	<input type="checkbox"/>	Property	<input type="checkbox"/>
Rancho	<input type="checkbox"/>	Other	<input type="checkbox"/>

Date of Survey September 27, 2016

COORDINATES (Optional)

N. _____
E. _____
Zone _____ NAD27 ☐ NAD83 ☐
NAD83 Epoch _____
Elev. _____
Vert. Datum: NGVD29 ☐ NAVD88 ☐
Meas. Units: Metric ☐ Imperial ☐

Pre-construction (waterline) Corner Record

Corner - Left as found ☒ Found and tagged ☐ Established ☐ Reestablished ☐ Rebuilt ☐

Identification and type of corner found: Evidence used to identify or procedure used to establish or reestablish the corner:
Found monument that could be damaged or destroyed by planned water line construction project.

Monument was referenced as shown on page 2. The purpose of this Corner Record is to preserve possible evidence only; no attempt was made to determine the relationship to property, centerline, or right of way lines.

A description of the physical condition of the monument as found and as set or reset:

Monument was found in good condition and was referenced with four set reference points representing two intersecting lines as shown on Page 2.

Reference EBMUD Field Book 4593, Page 39-40 (Burke/Chou)

SURVEYOR'S STATEMENT

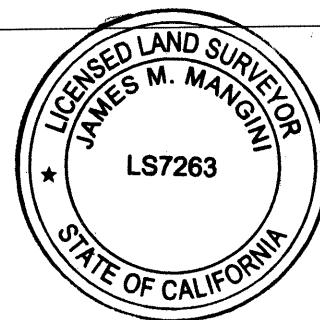
This Corner Record was prepared by me or under my direction in conformance with the Professional Land Surveyor's Act on NOVEMBER 30, 2016

Signed

James H. Mangin

P.L.S or R.C.E. No.

7263



COUNTY SURVEYOR'S STATEMENT

This Corner Record was received 30 NOVEMBER 2016
and examined and filed 17 JANUARY 2017

Signed

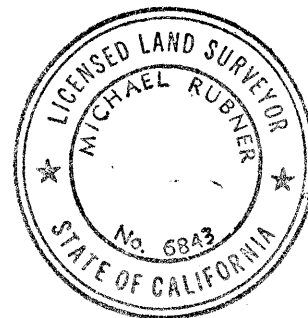
Michael Rbm

P.L.S or ~~R.C.E.~~ No.

6843

Title

COUNTY SURVEYOR



County Surveyor's Comment:

OAKLAND

ALAMEDA COUNTY



SCALE
1"=30'

JOHN SWETT SCHOOL

RANCHO
SAN ANTONIO —
A.M. PERALTA-ETAL
A M 669

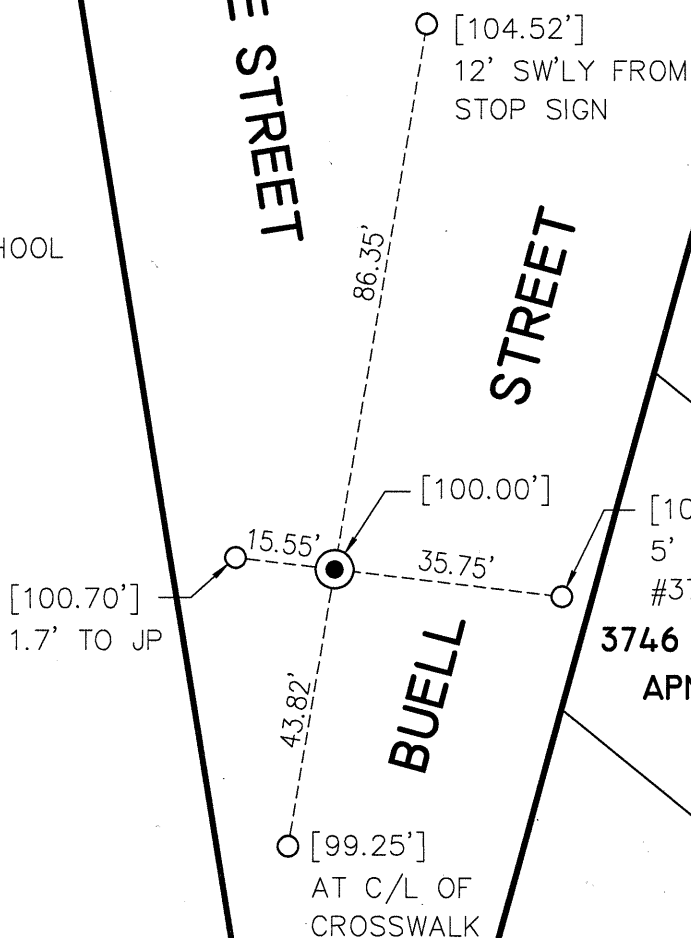
10 M 32
BLOCK 63
15

STEELE STREET

STREET

BUELL

SUBDIVISION NO. 2 OF PARK PLACE
10 M 32
BLOCK 65



LEGEND



FOUND 1/4" PIN IN CONCRETE, DOWN 1', IN CITY STANDARD MONUMENT WEL



SET CONCRETE NAIL AND 1-1/2" ALUMINUM WASHER, STAMPED "EBMUD MON RP"

[] ELEVATION (MEASURED USING A LEICA DNA10 DIGITAL LEVEL)



ADDRESS: 3746 BUELL STREET
APN: 38-2552-19

CR# 9337

CR