

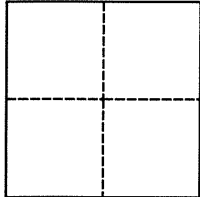
CORNER RECORD

Agency Index BK 29 PG 95
Document Number CR 13594

City of Oakland (APN 43A-4690-13) County of Alameda, California
Brief Legal Description Monument near 3462 Calandria Avenue

CORNER TYPE

COORDINATES (Optional)



Government Corner ☐ Control ☒
Meander ☐ Property ☐
Rancho ☐ Other ☐

N. _____ E. _____

Elevation _____

Units Metric ☐ U.S. Survey Foot ☐

Horizontal Datum _____

Zone _____ Epoch Date _____

Vertical Datum _____

Date of Survey June 27, 2019

☐ Complies with Public Resources Code §§8801-8819

☐ Complies with Public Resources Code §§8890-8902

PLS Act Ref.: ☐ 8765(d) ☒ 8771 ☐ 8773 ☐ Other:
Corner/
Monument: ☒ Left as found ☐ Established ☐ Rebuilt ☐ Pre-Construction
☐ Found and tagged ☐ Reestablished ☐ Referenced ☒ Post-Construction

Narrative of corner identified and monument as found, set, reset, replaced, or removed:

☒ See sheet #2 for description(s):

City monument was referenced prior to pipeline construction per CR 9529 (90 CR 21). Monument was checked on 6/27/19 by an EBMUD survey crew, and found undisturbed and in good condition. See sheet 2.

Reference Pre-costruction Survey, EBMUD Field Book 4597, Page 07-08

Post-Construction Survey by (Doring/Ingram)

SURVEYOR'S STATEMENT

This Corner Record was prepared by me or under my direction in conformance with

the Professional Land Surveyors' Act on DECEMBER 12, 2019.

Signed James M. Mangin P.L.S. or R.C.E. No. 7263



COUNTY SURVEYOR'S STATEMENT

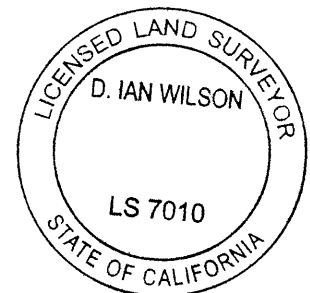
This Corner Record was received December 9, 2019

and examined and filed DEC 16 2019.

Signed D. Ian Wilson P.L.S. or R.C.E. No. 7010

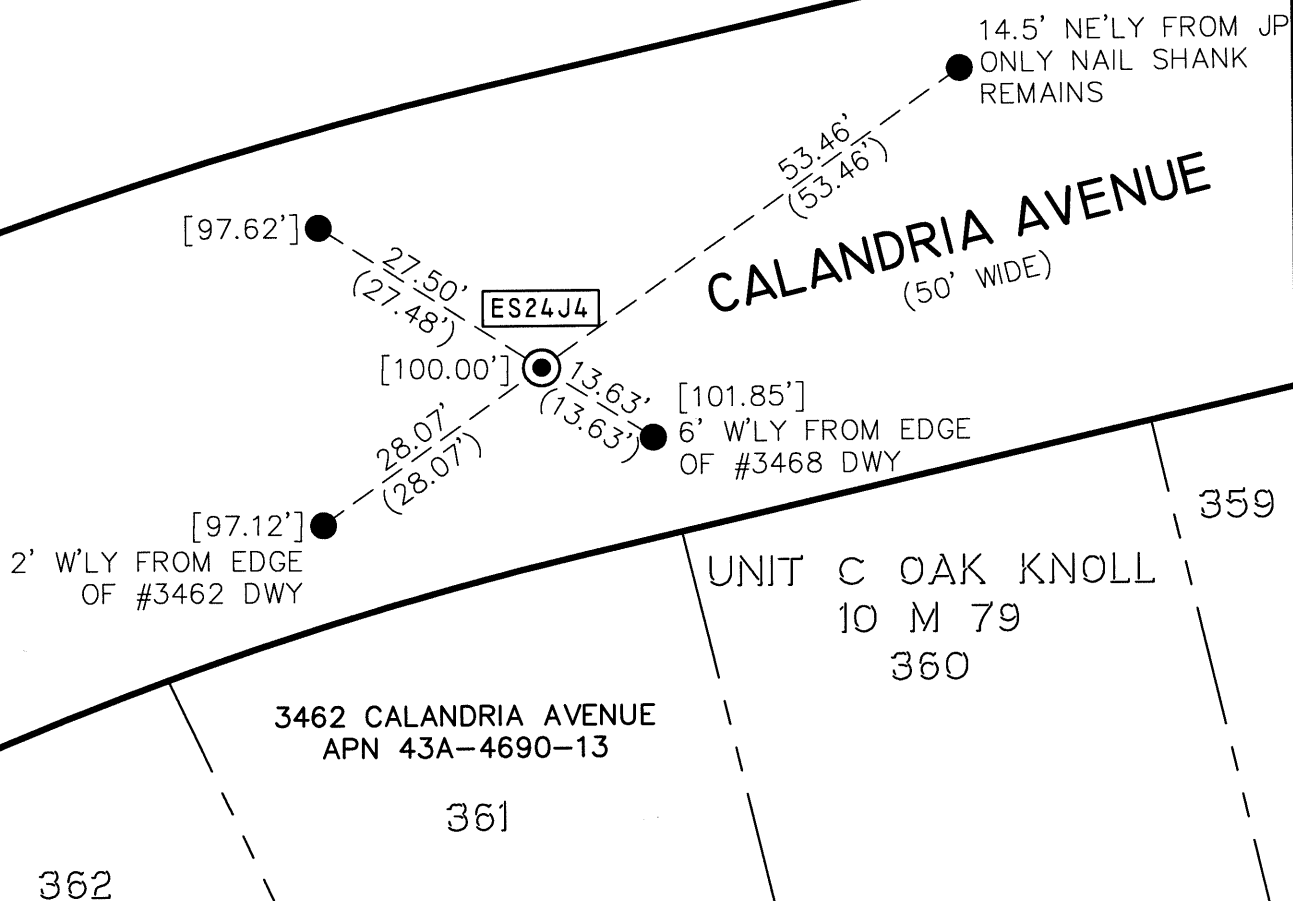
Title ALAMEDA COUNTY SURVEYOR

County Surveyor's Comment



OAKLAND**ALAMEDA COUNTY**

PLAT OF THE PART OF
THE RANCHO DE SAN ANTONIO
FINALLY CONFIRMED TO YGNACIO PERALTA
A M 60

**LEGEND**

FOUND 1/4" PIN, IN CONCRETE BASE, DOWN 1.1', IN STANDARD
MONUMENT WELL; IN GOOD CONDITION, PER CR 9529



FOUND CONCRETE ANCHOR NAIL WITH 1-1/2" ALUMINUM WASHER,
STAMPED "EBMUD MON RP", PER CR 9529

AA##A#

ALAMEDA COUNTY MONUMENT ID

[]

ASSUMED ELEVATION (MEASURED USING A LEICA DNA10 DIGITAL
LEVEL), PER CR 9529

(#.#') RP DISTANCE PER CR 9529



SCALE
1"=20'



ADDRESS: 3462 CALANDRIA AVENUE

APN: 43A-4690-13