

TRACT NO. 7327

CONSISTING OF THREE SHEETS
BEING A PORTION OF THE CHABOYA PARTITION
IN THE RANCHO YERBA BUENA Y SOCAYE
AND LYING WITHIN THE CITY OF

SAN JOSE CALIFORNIA
SCALE: 1"=60'
JUNE 1983

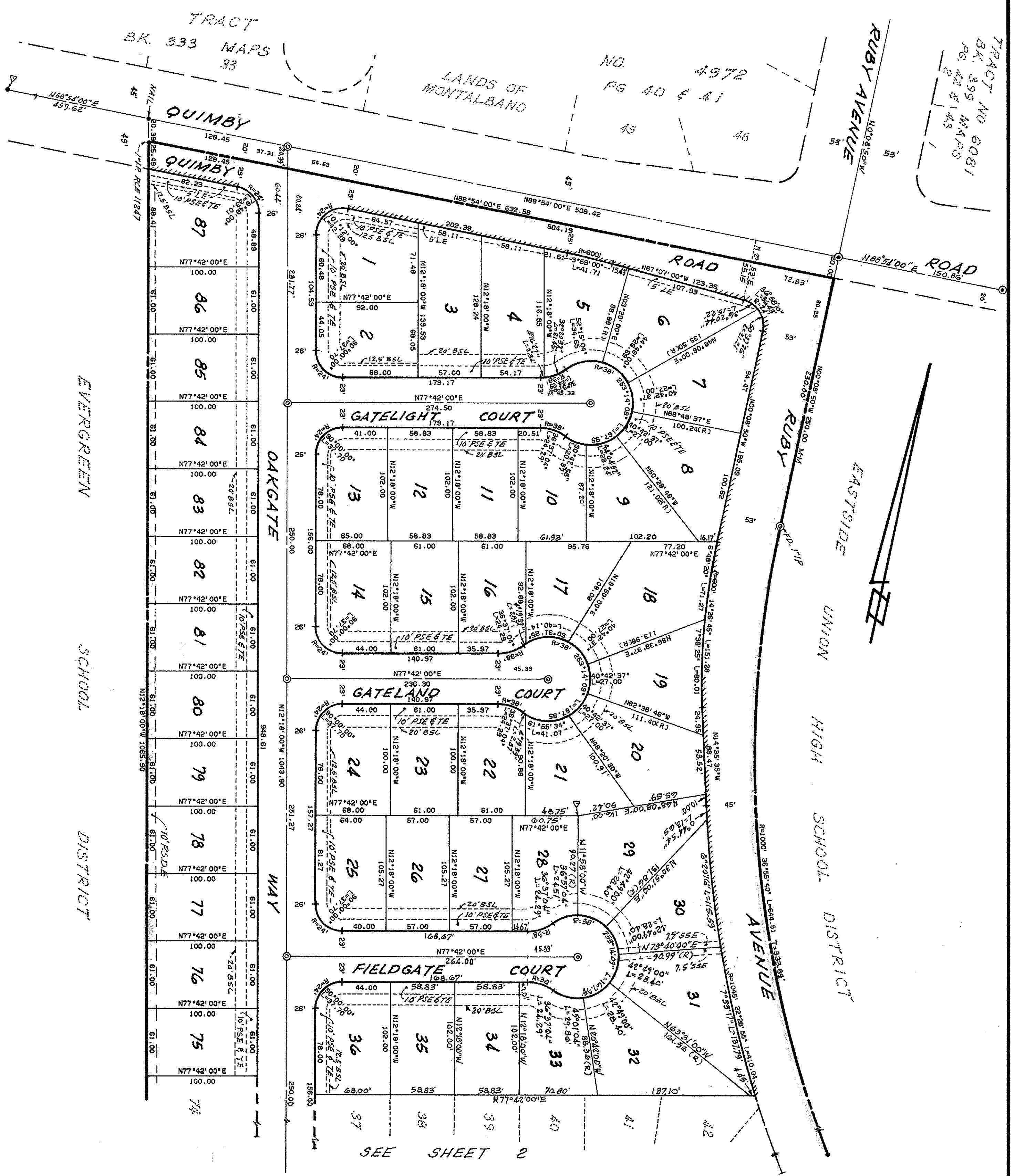
BASIS OF BEARINGS

THE BEARING OF THE MONUMENT LINE OF
QUIMBY ROAD BEING N88°54'E AS SHOWN ON
TRACT NO. 4972 A MAP OF WHICH WAS FILED
FOR RECORD IN BK. 333 OF MAPS AT PAGE
40 & 41 SANTA CLARA COUNTY RECORDS
WAS TAKEN AS THE BASIS OF BEARINGS
SHOWN HEREON.

LEGEND & NOTES

- STANDARD CITY MONUMENT FOUND
- STANDARD CITY MONUMENT SET
- 3/4" IRON PIPE FOUND UNLESS OTHERWISE NOTED
- 3/4" IRON PIPE SET
- ANGLE POINT
- P50E PRIVATE STORM DRAINAGE EASEMENT
- P5E PUBLIC SERVICE EASEMENT
- THE TREE EASEMENT
- LE LANDSCAPE EASEMENT
- SDE STORM DRAINAGE EASEMENT
- SSE SANITARY SEWER EASEMENT
- B5L BUILDING SETBACK LINE (SEE ZONING ORDINANCE FOR ALL SETBACK REQUIREMENTS)
- LLINE INDICATES NO VEHICULAR ACCESS

ALL DISTANCES AND DIMENSIONS ARE GIVEN IN
FEET AND DECIMALS THEREOF.
THE BLUE BORDER LINE INDICATES THE BOUNDARY
OF LAND SUBDIVIDED BY THIS MAP.
A SOIL REPORT ON THIS PROPERTY HAS BEEN
PREPARED BY UNITED SOIL ENGINEERING, INC.
DATED AUGUST 1981. A COPY OF WHICH IS ON
FILE IN THE OFFICE OF THE CITY CLERK OF THE
CITY OF SAN JOSE.



MacKay & Smith

CIVIL ENGINEERS
SAN JOSE CALIFORNIA