

All ideas, designs, arrangement and plans indicated or represented by this drawing are the property of Panda Express Inc. and were created for use on this specific project. None of these ideas, designs, arrangements or plans may be used by or disclosed to any person, firm, or corporation without the written permission of Panda Express Inc.

CHECK SET	04-20-23
BID/PERMIT SET	06-01-23

LBYD

PANDA STORE #: TBD

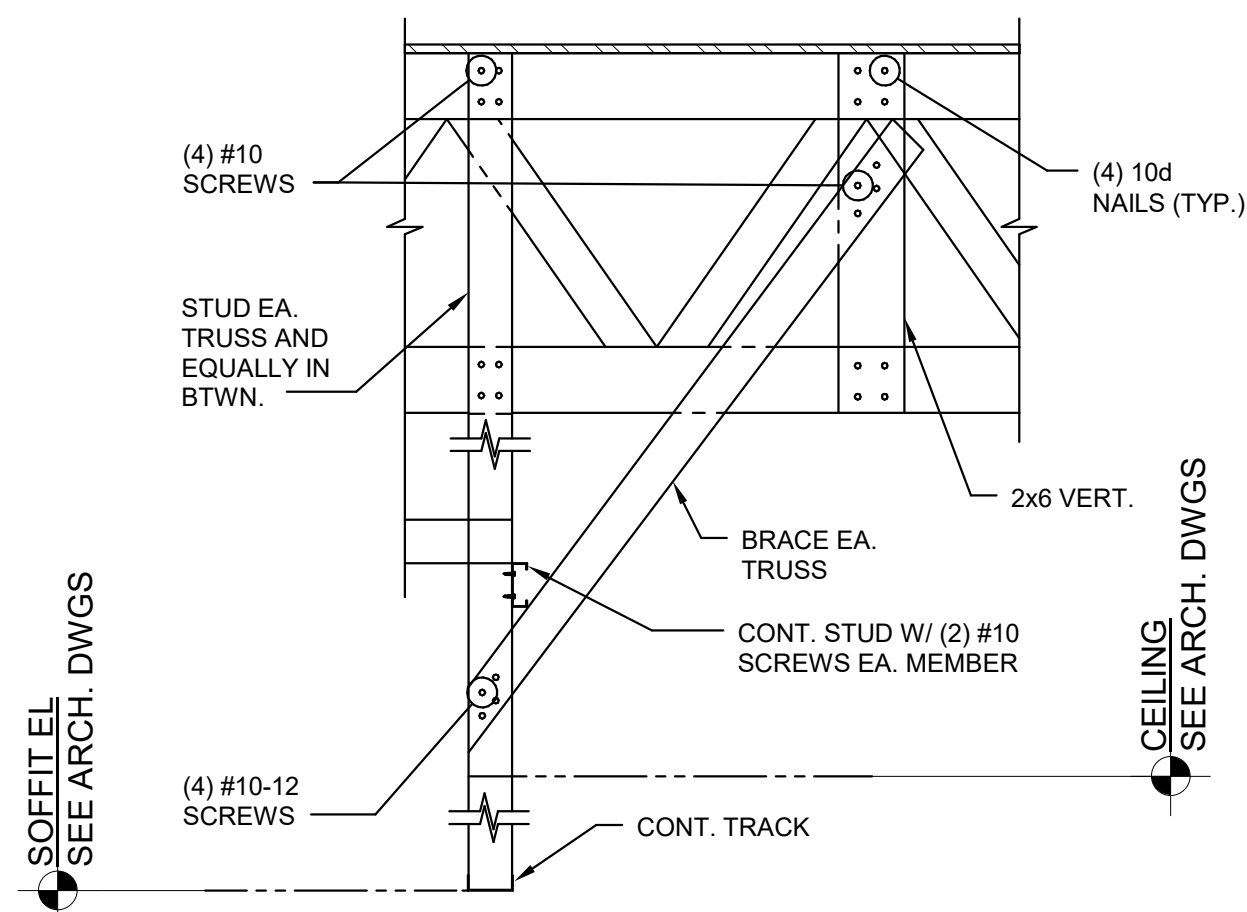
ARCH PROJECT #: 239201

bdg  
architects

PANDA HOME 2600  
450 Kannapolis Parkway  
Concord, NC 28027

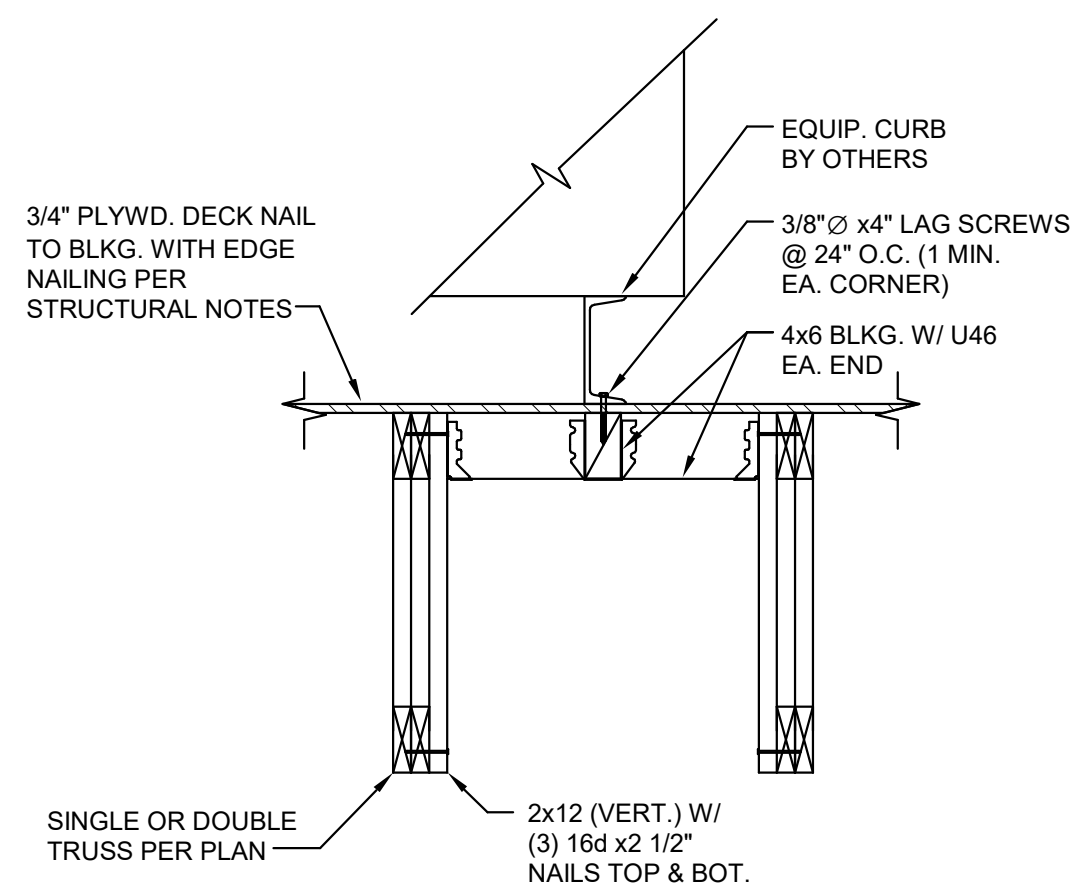
S104

PANDA HOME 2600 R3

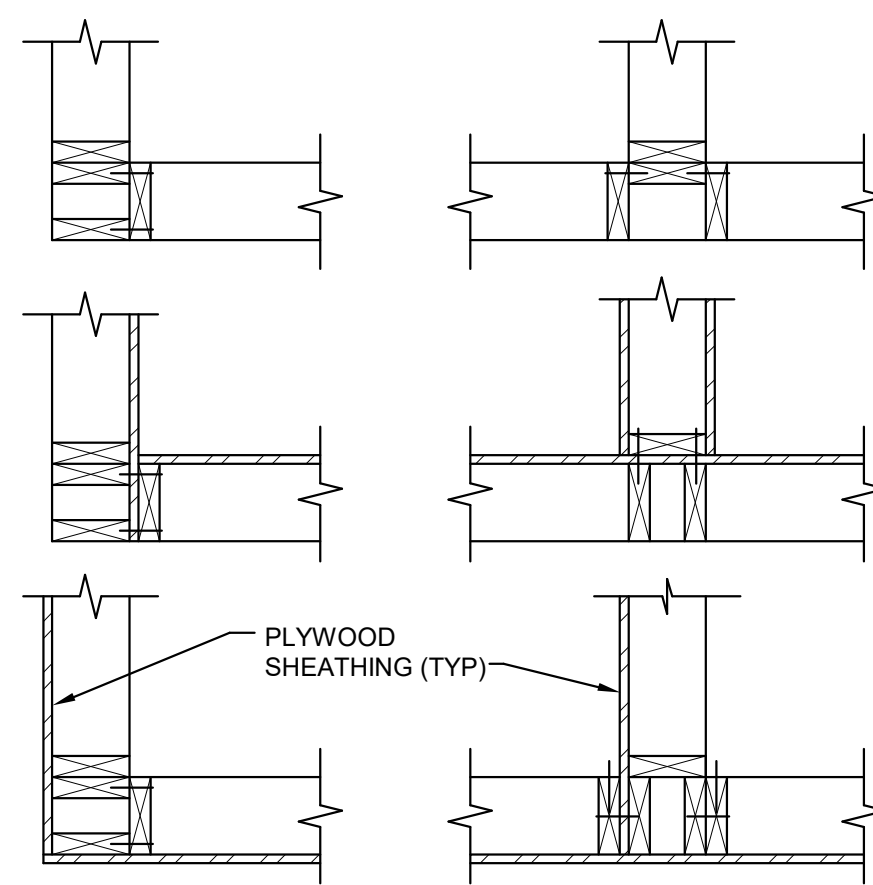


### Typical Canopy Block

### Soffit Detail at Service Counter

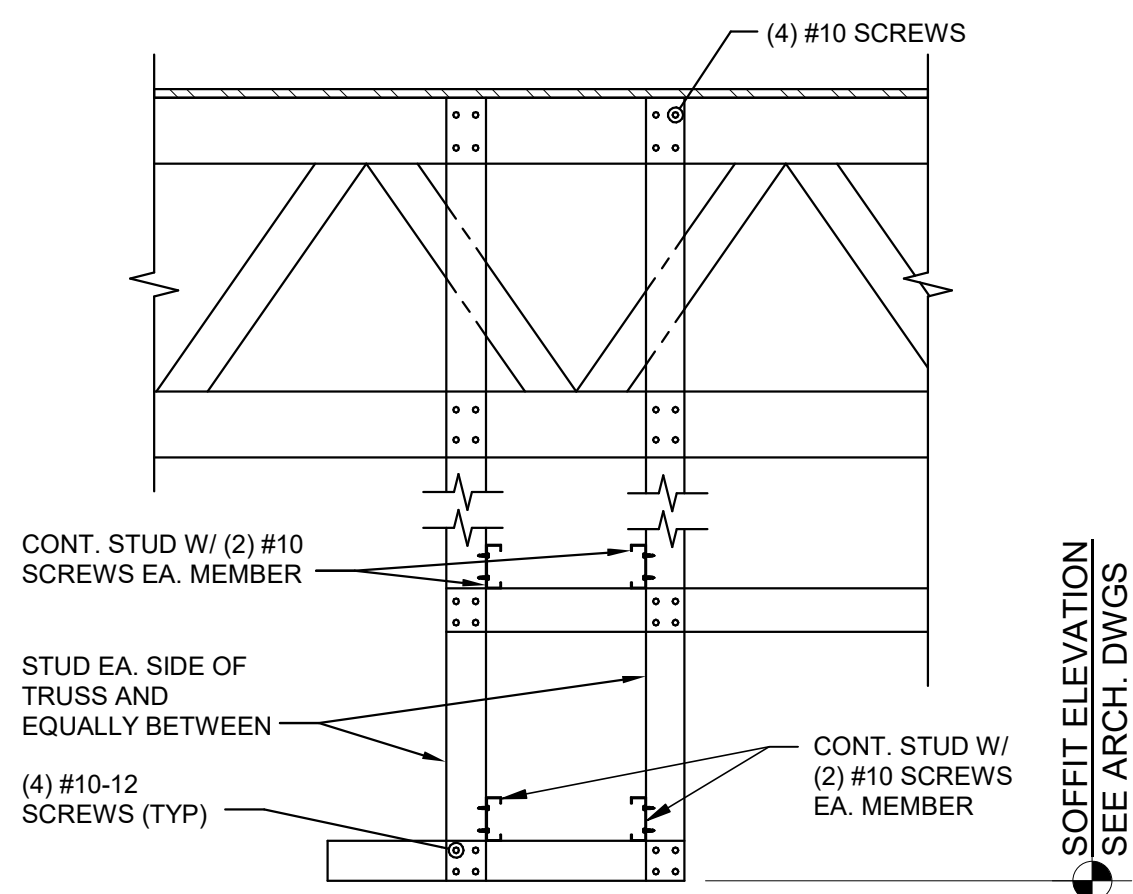


## Typical Mechanical Support Unit

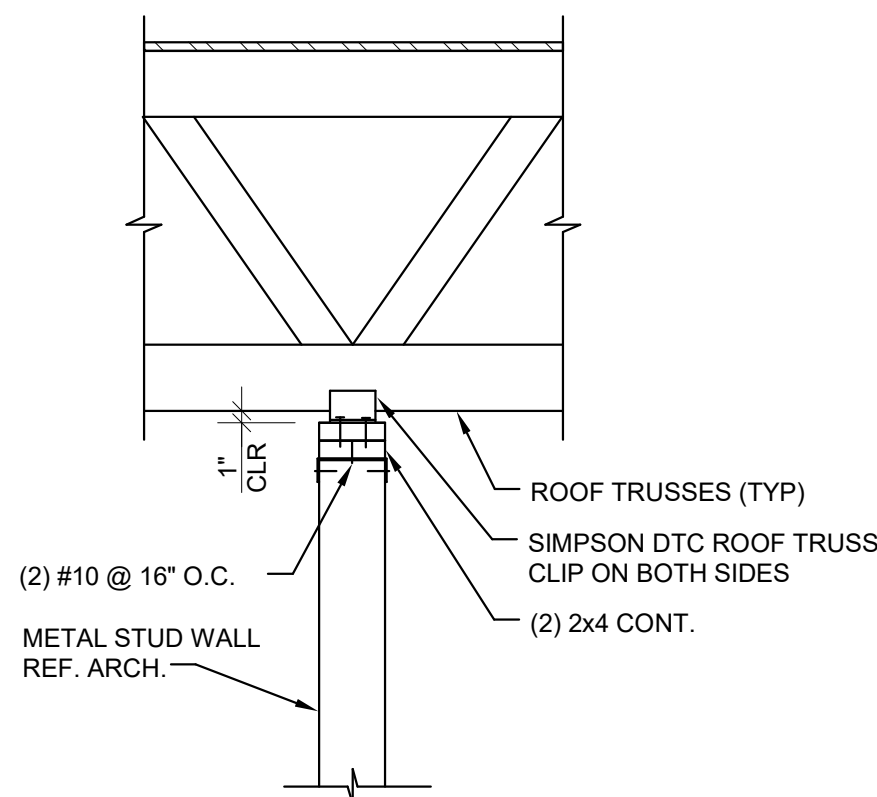


## Corners Intersections

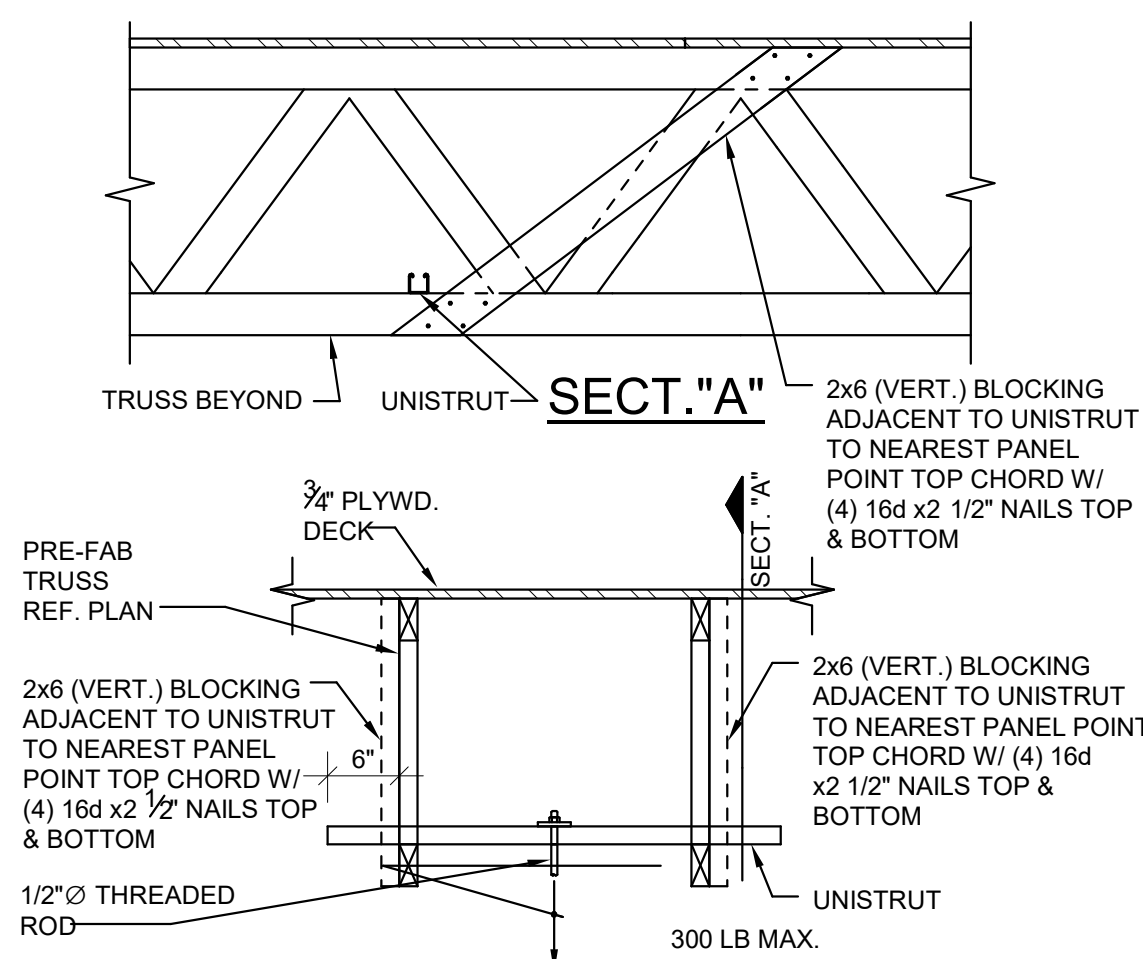
### Typical Wall Framing



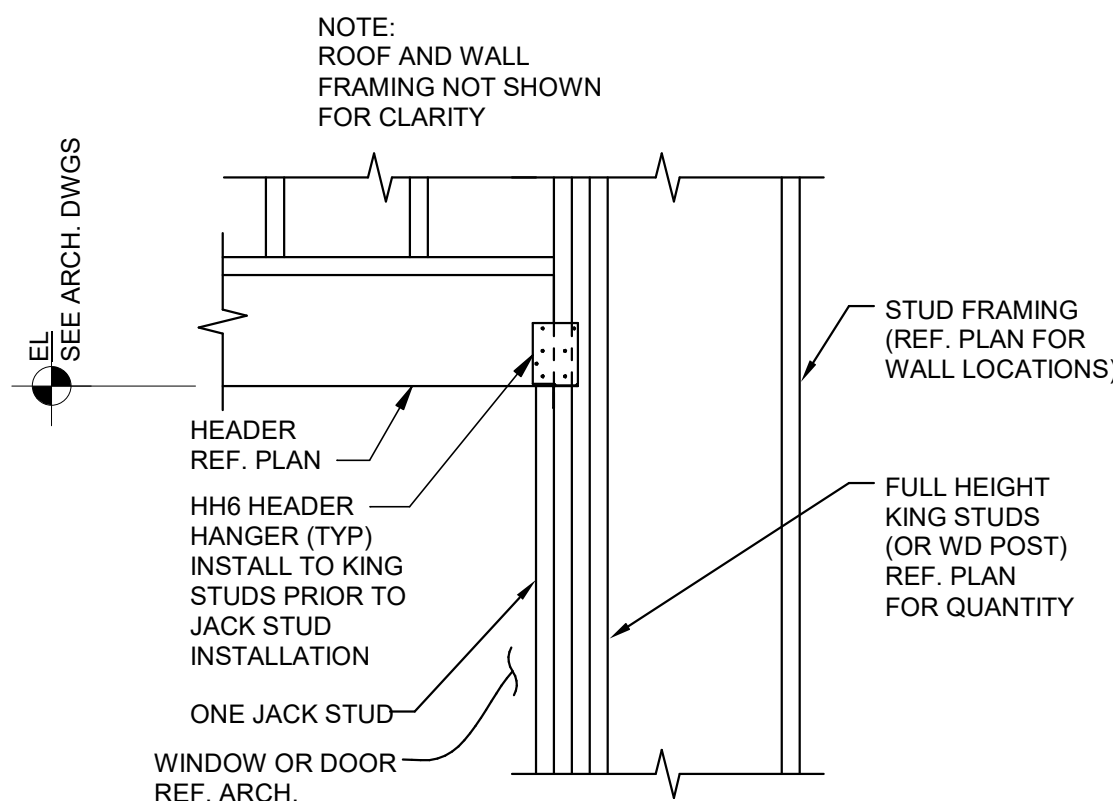
### Soffit Detail at Serv Counter



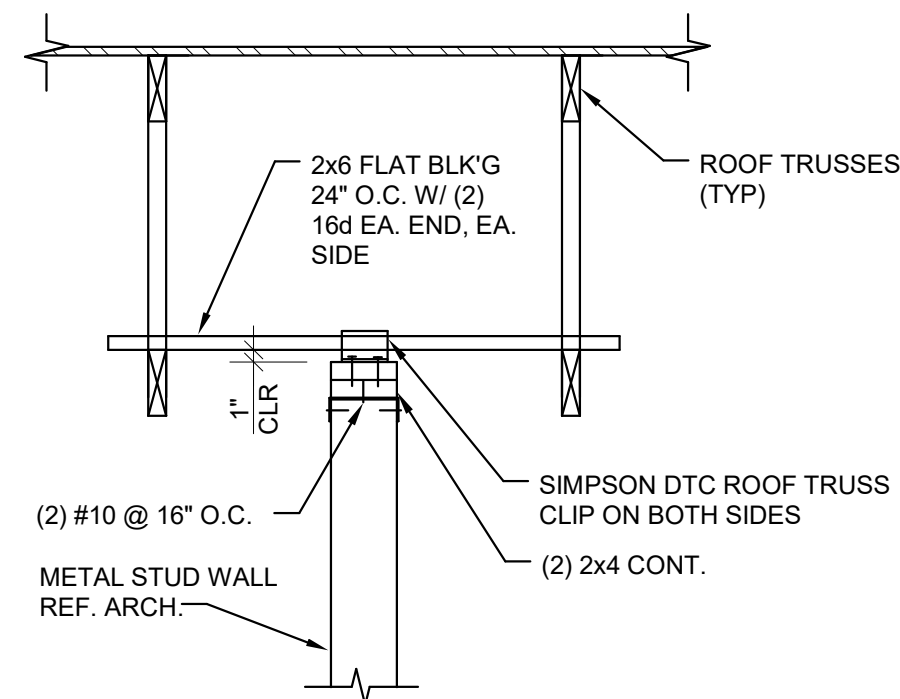
### Support Perpendicular to Truss



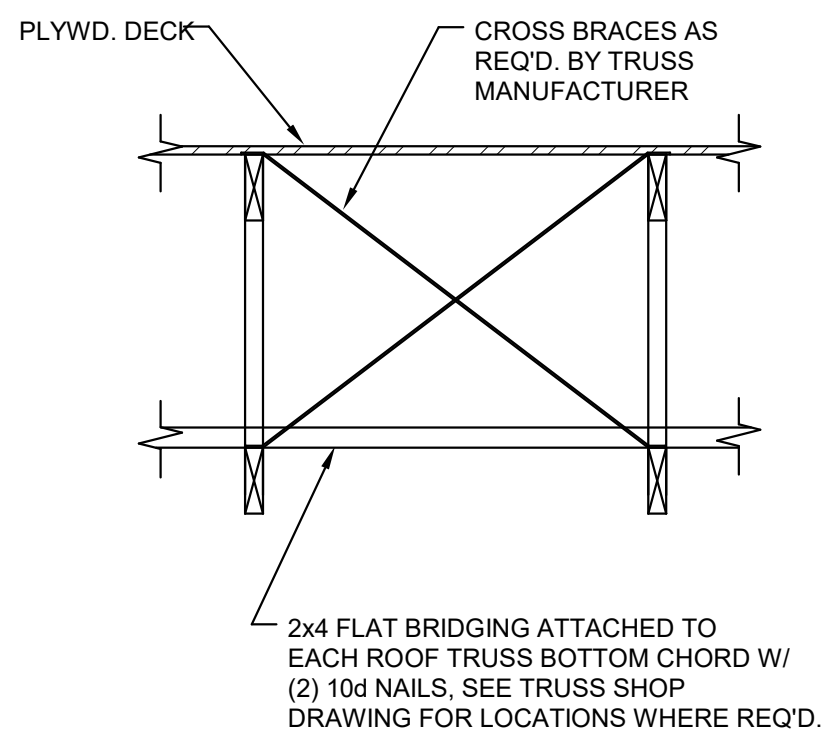
## Typical Hanger Support



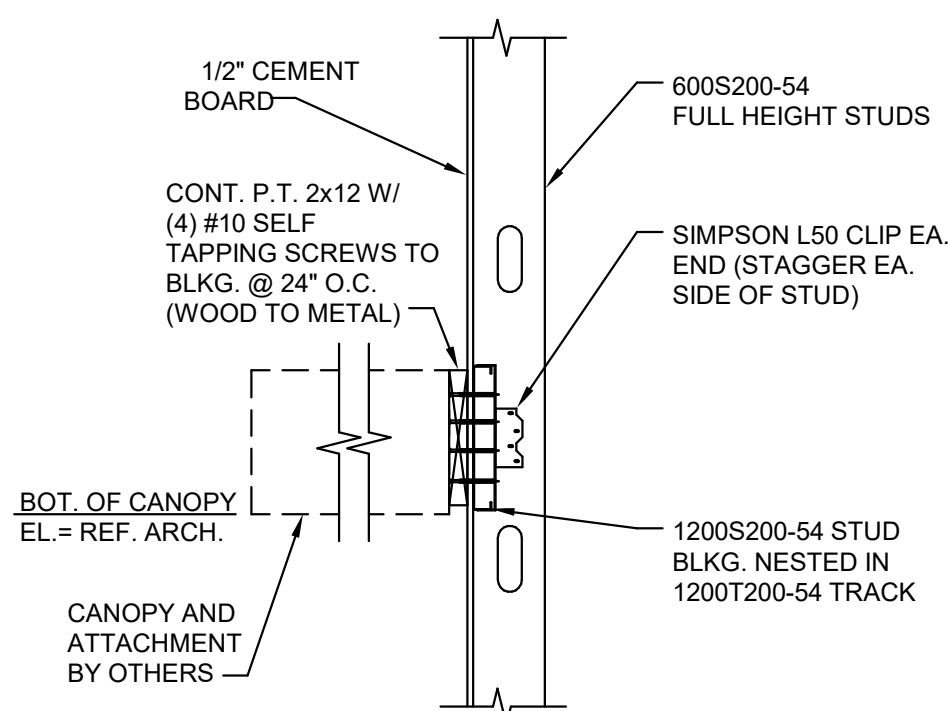
## Typical Wood Header Framing



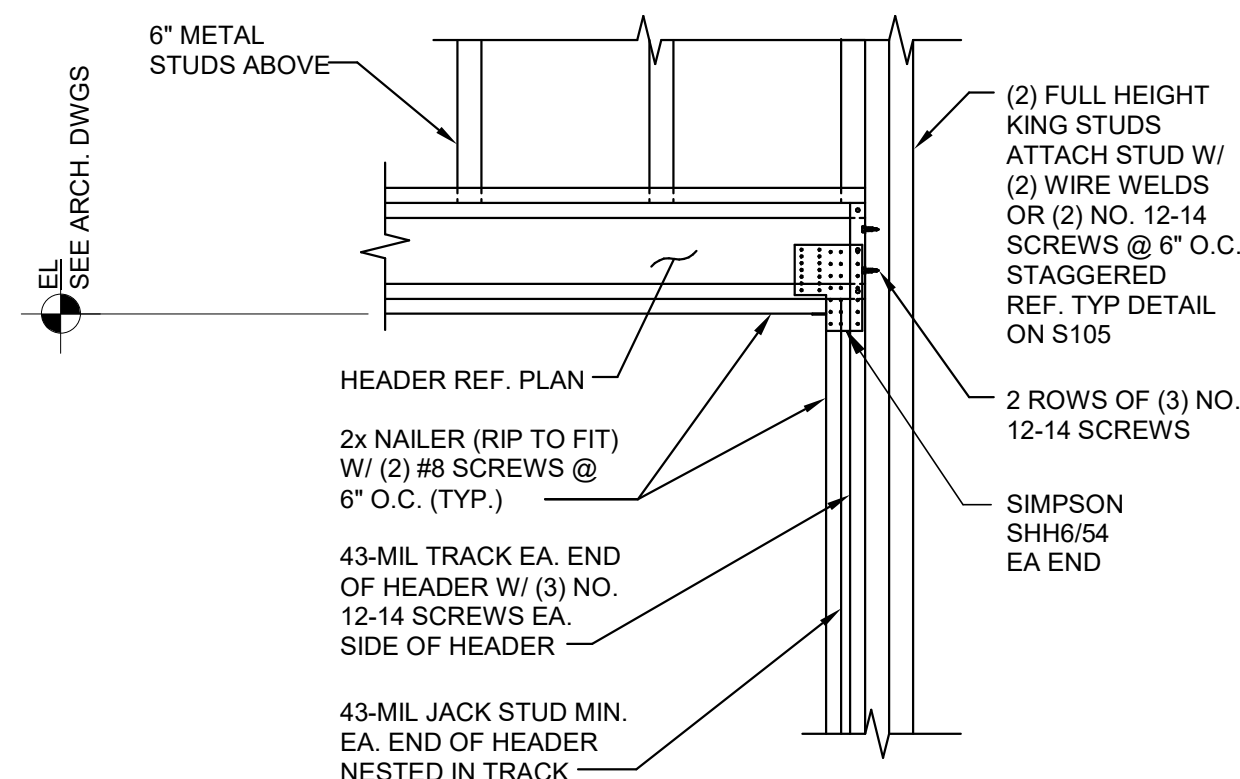
### Support Parallel to Truss



## Typical Bridging and Bracing



### Small Canopy Blkg at Metal Stud



## Typical Cold-Formed Metal Header Framing