

3/12/2018 10:39:09 AM

E

D

C

B

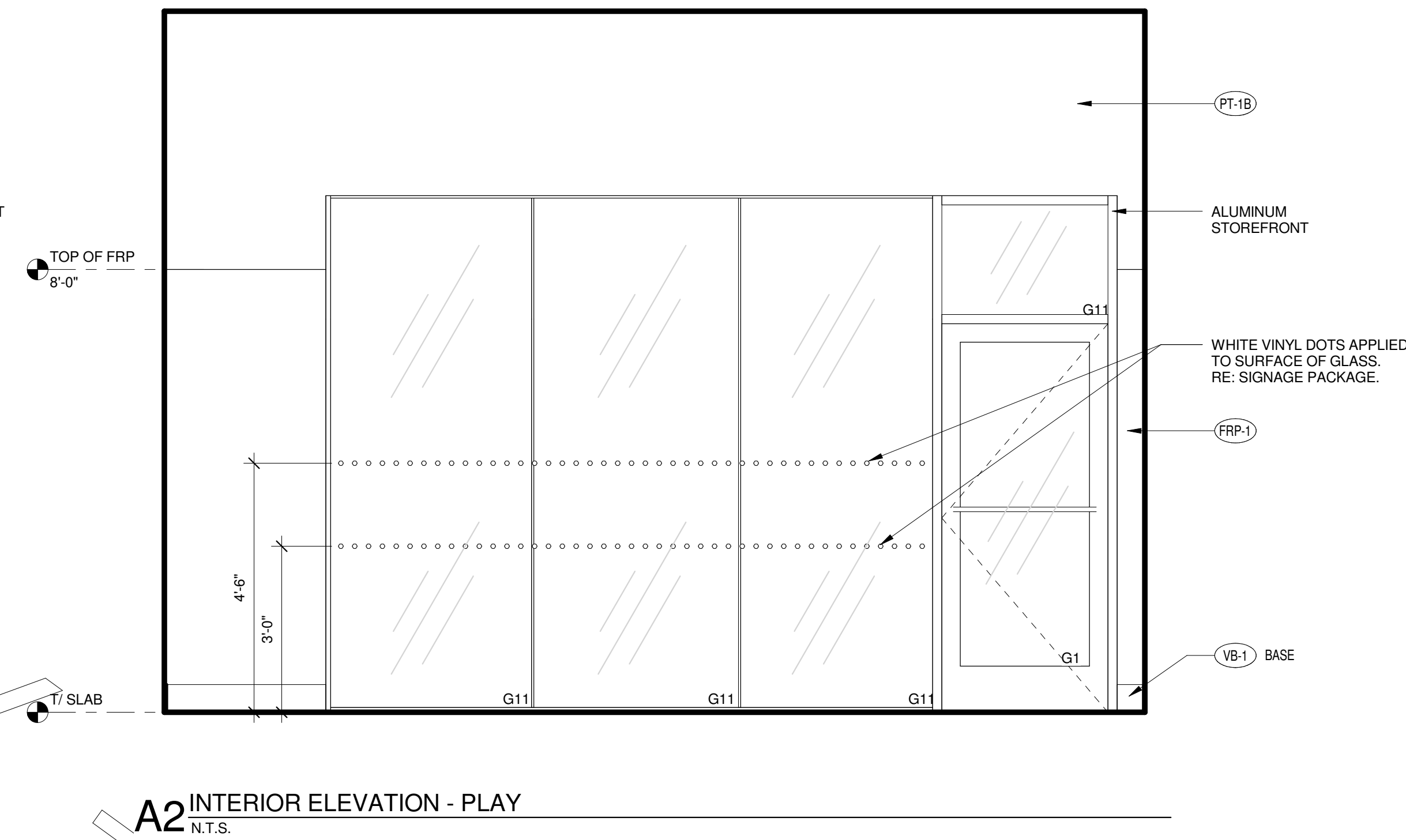
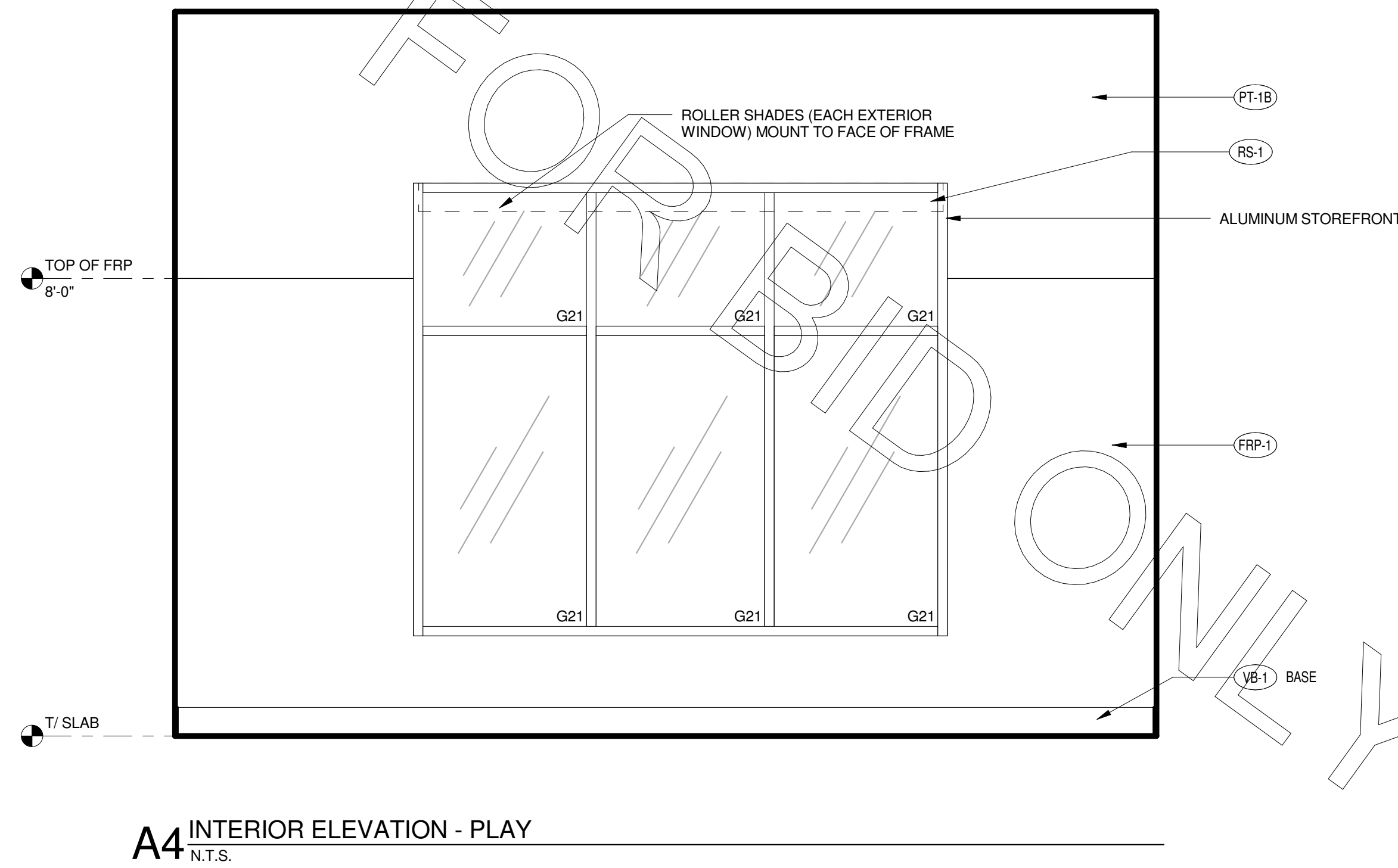
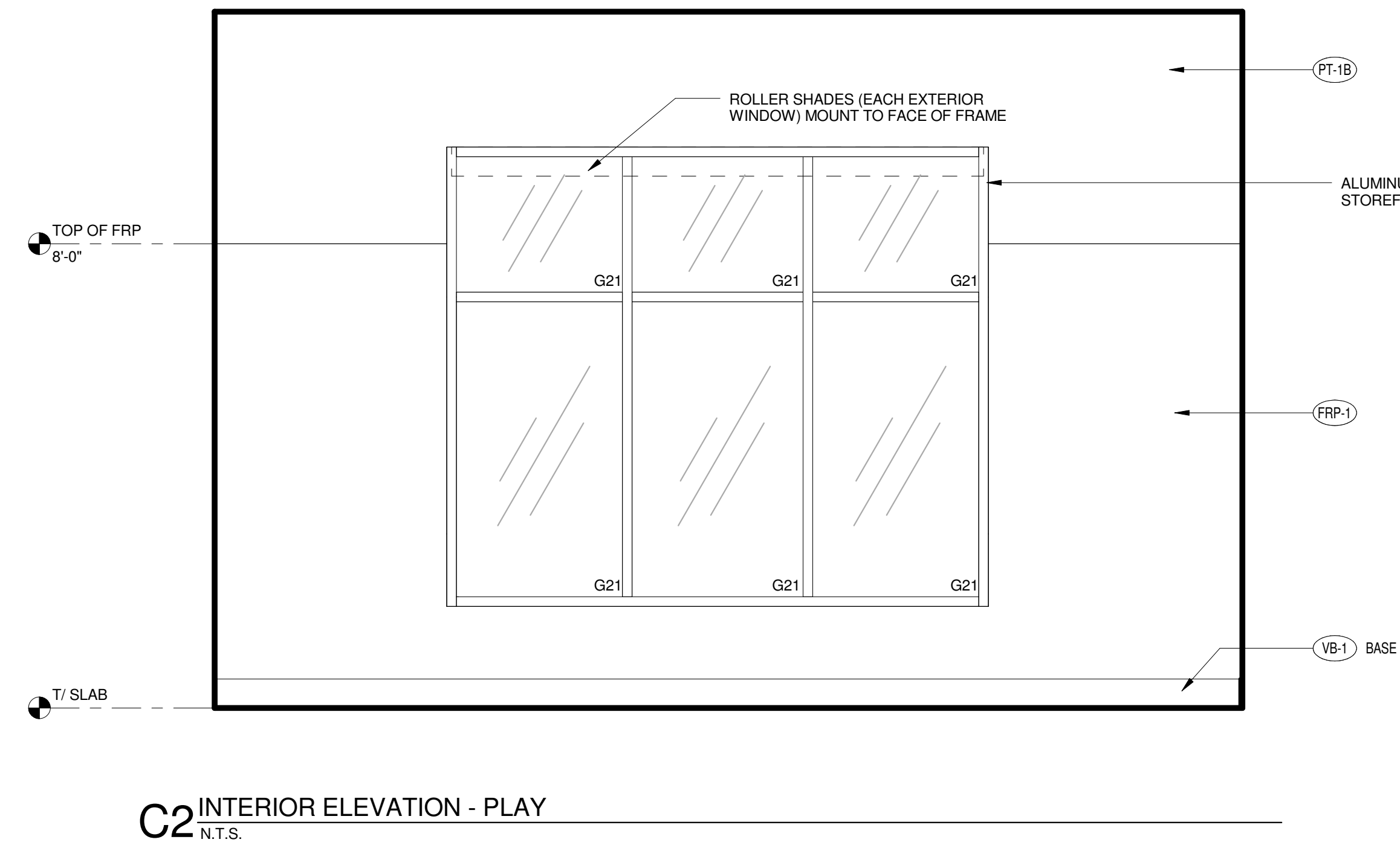
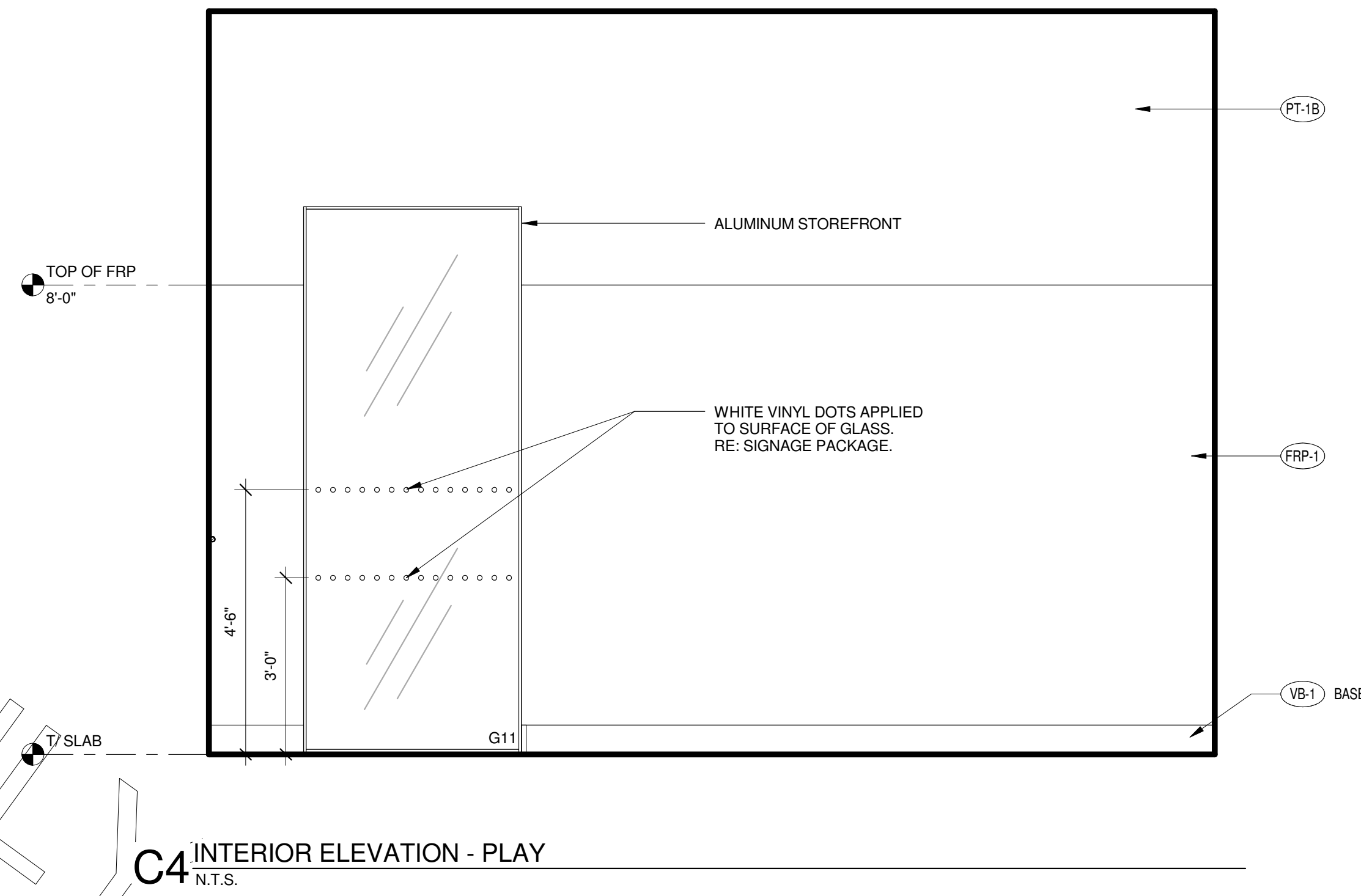
A

4

3

2

1



- NOTE:**
1. PROVIDE 5" HIGH CEMENTITIOUS BOARD SUBSTRATE AT BASE OF ALL WALLS IN DINING ROOM AND VESTIBULE.
 2. PROVIDE 12" HIGH CEMENTITIOUS BOARD SUBSTRATE AT BASE OF ALL WALLS IN KITCHEN.
 3. PROVIDE CEMENTITIOUS BOARD SUBSTRATE FOR THE FULL HEIGHT OF TILE AT ALL WALLS WITH WALL TILE.
 4. AT WAINSCOT LOCATIONS, PROVIDE 5" HIGH CEMENTITIOUS BOARD BEHIND TILE BASE, THEN PLYWOOD SUBSTRATE TO TOP OF WAINSCOT, THEN GYPSUM BOARD TO CEILING.

INTERIOR ELEVATION GENERAL NOTES

A.1 REFER TO SHEET A-622 FOR WAINSCOT DETAILS.
A.2 GC TO PROVIDE BLOCKING FOR ALL WALL SHELIVING.
REFER TO K SHEETS FOR LOCATIONS



Chick-fil-A

Chick-fil-A
5200 Buffington Road
Atlanta, Georgia 30349-2998

INTERPLAN
ARCHITECTURE
ENGINEERING
INTERIOR DESIGN
PROJECT MANAGEMENT

604 COURTLAND STREET
SUITE 100
ORLANDO, FLORIDA 32804
PH 407.645.5008
FX 407.629.9124

SEAL:
THIS DOCUMENT IS **NOT FOR CONSTRUCTION**
UNLESS THE ARCHITECT OR ENGINEER'S
SIGNATURE AND SEAL APPEAR BELOW

CHICK-FIL-A
Cherokee Place FSR
115 Cherokee Place, Cartersville, GA 30121

FSR# 00534

REVISION SCHEDULE

NO.	DATE	DESCRIPTION
-----	------	-------------

CONSULTANT PROJECT #	2017.0149
PRINTED FOR	Bid
DATE	November 20, 2017
DRAWN BY	AD

Information contained on this drawing and in all digital files produced for above named project may not be reproduced in any manner without express written or verbal consent from authorized project representatives.

SHEET
INTERIOR ELEVATIONS

SHEET NUMBER

A-606L

Bid