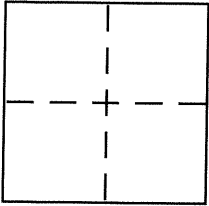


BK39 Pg 87

**CORNER RECORD**Document Number CR 4427City of BERKELEYCounty of ALAMEDA, CaliforniaBrief Legal Description CITY MONUMENT B3630**CORNER TYPE**

Government Corner ☐ Control ☒  
 Meander ☐ Property ☐  
 Rancho ☐ Other ☐  
 Date of Survey 12-20-10

**COORDINATES (Optional)**

N. \_\_\_\_\_  
 E. \_\_\_\_\_  
 Zone \_\_\_\_\_ NAD27 ☐ NAD83 ☐  
 NAD83 Epoch \_\_\_\_\_  
 Elev. \_\_\_\_\_  
 Vert. Datum: NGVD29 ☐ NAVD88 ☐  
 Meas. Units: Metric ☐ Imperial ☐

Corner – Left as found ☒ Found and tagged ☐ Established ☐ Reestablished ☐ Rebuilt ☐

Identification and type of corner found: Evidence used to identify or procedure used to establish or reestablish the corner:

FOUND CITY MONUMENT

In compliance with Section 8771 of the Professional Land Surveyors' Act, this corner record is being filed to ESTABLISH the position of an existing monument PRIOR to street or highway construction.

A description of the physical condition of the monument as found and as set or reset:

SET CROSS**SURVEYOR'S STATEMENT**

This Corner Record was prepared by me or under my direction in conformance with the Land Surveyor's Act on 1-14-11

Signed Robert J. Brunel P.L.S. or R.C.E. No. 4961

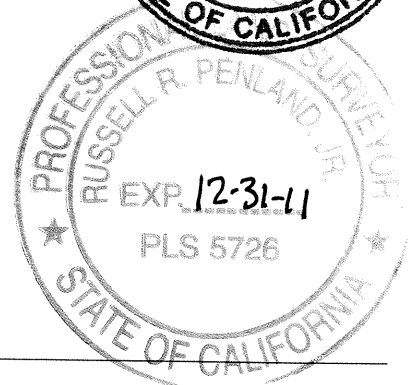
**COUNTY SURVEYOR'S STATEMENT**

This Corner Record was received 1-21-11  
 and examined and filed 3-24-11

Signed Russell R. Penland Jr. P.L.S. or R.C.E. No. 5726

Title COUNTY SURVEYOR

County Surveyor's Comment \_\_\_\_\_

WA9402

ELEVATION=295.21

ARCH STREET

ELEVATION=301.18

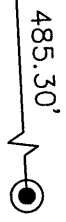


LEGEND

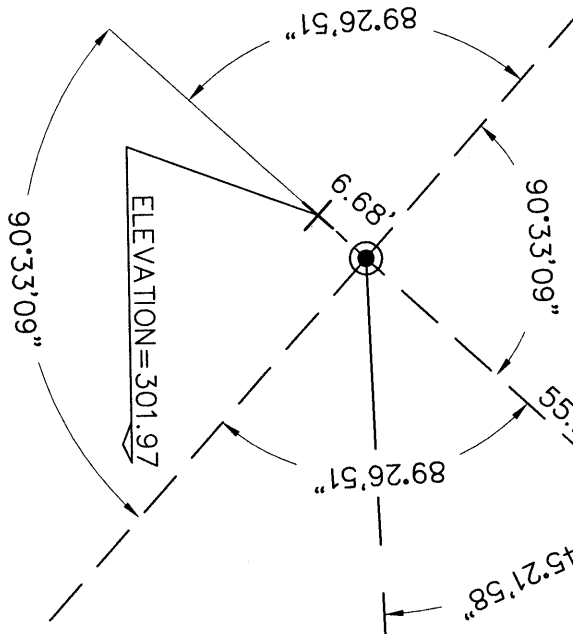
- FOUND CITY MONUMENT AS NOTED
- + SET CROSS

AA##AA# ALAMEDA COUNTY MONUMENT ID

VIRGINIA STREET



FOUND 1/4 INCH BRASS  
PIN MONUMENT B3630  
FLUSH IN PLANTER STRIP  
WITHOUT STANDARD  
CASTING AT VIRGINIA  
STREET AND ARCH  
STREET  
ELEVATION=301.74



FOUND 1 INCH IRON PIN  
MONUMENT B0606 IN  
CONCRETE INSIDE  
STANDARD CASTING AT  
VIRGINIA STREET AND  
SCENIC AVENUE  
ELEVATION=324.09

XL 75 P5

CORNER RECORD

TO REFERENCE MONUMENT B3630  
AT VIRGINIA STREET AND ARCH STREET  
CITY OF BERKELEY, COUNTY OF ALAMEDA, CALIFORNIA

DECEMBER 20, 2010 SCALE: 1"=20'

ELEVATION=307.15