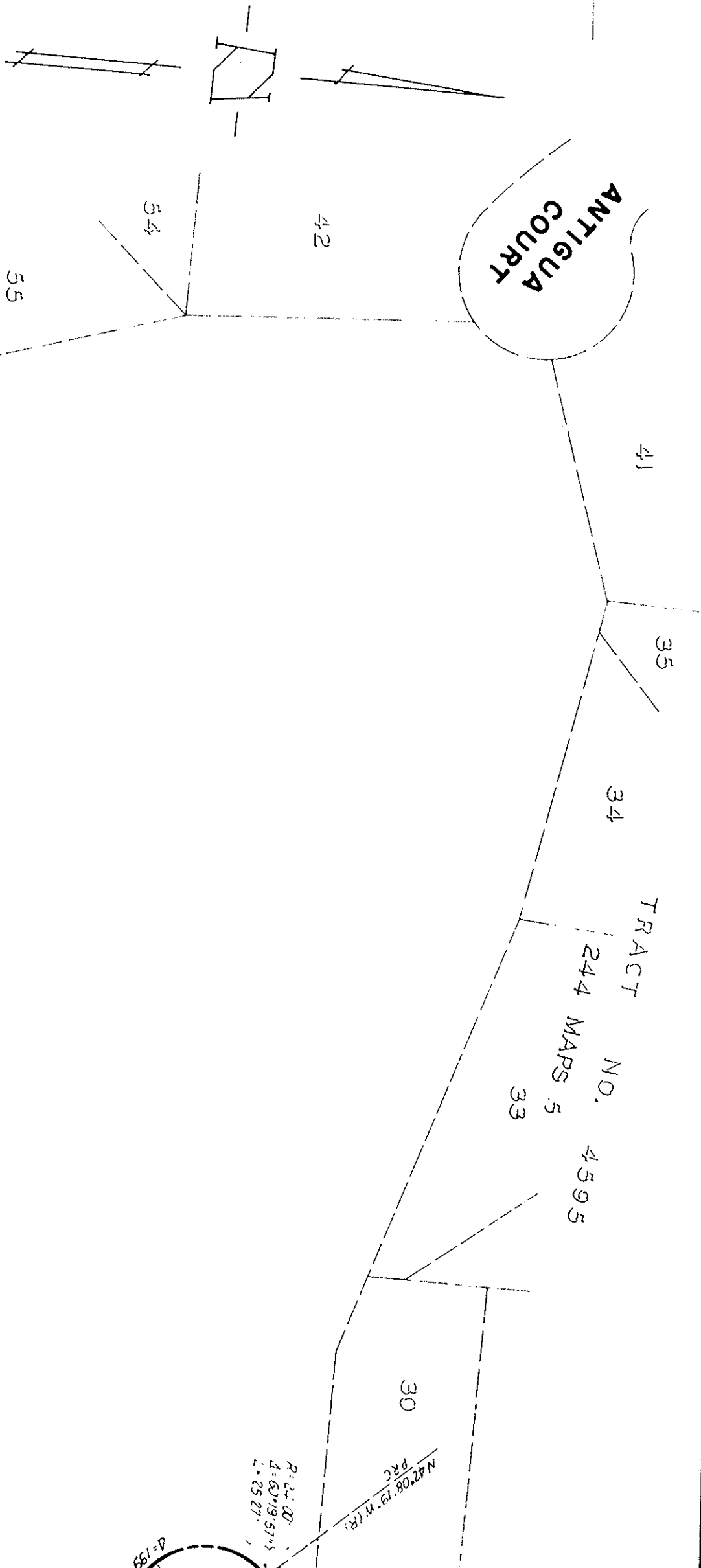


MAP REFERENCE TABLE	
A	244 Maps 5, 6
B	663 Maps 34, 35

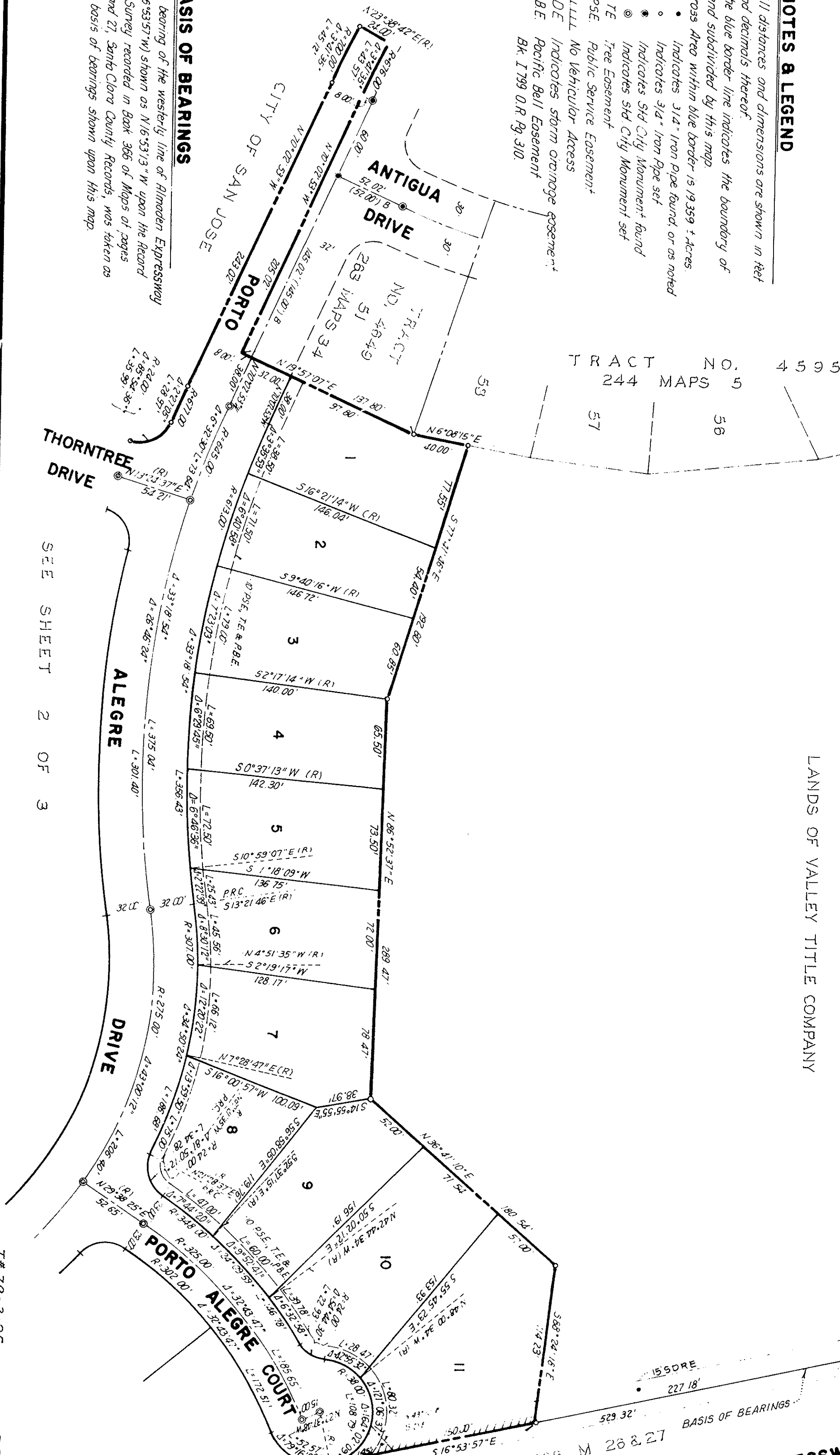


NOTES & LEGEND

- All distances and dimensions are shown in feet and decimals thereof.
- The blue border line indicates the boundary of land subdivided by this map.
- Gross Area within blue border is 19,359 ± acres.
- Indicates 3/4" Iron Pipe set
 - Indicates Sid City Monument found
 - Indicates Sid City Monument set
 - Tree Easement
 - TE Tree Easement
 - PSE Public Service Easement
 - LLLL No Vehicular Access
 - SDE Indicates storm drainage easement
 - PBE Pacific Bell Easement
 - BK. I 799 O.R. Pg. 310.

BASIS OF BEARINGS

The bearing of the westerly line of Almaden Expressway (N16°53'57"W) shown as N16°53'13"W upon the Record of Survey recorded in Book 366 of Maps of pages 26 and 27, Santa Clara County Records, was taken as the basis of bearings shown upon this map.



AMENDED TRACT NO. 6656

CONSISTING OF THREE SHEETS
BEING AN AMENDMENT OF TRACT NO. 6656 RECORDED IN
BOOK 519 OF MAPS, PAGES 12, 13 & 14, SANTA CLARA CO. RECORDS,
LYING ENTIRELY WITHIN THE

CITY OF SAN JOSE — CALIFORNIA

SCALE: 1" = 60'

SEPTEMBER 1984

HMH H.M.H. INCORPORATED
Consulting Civil Engineers

EXPRESSWAY

BASIS OF BEARINGS

R.O.S. 207 M 46-49
R.O.S. 366 M 26&27

ALMADEN

NO VEHICULAR ACCESS

PORTO ALEGRE COURT

BRASILIA WAY

NO VEHICULAR ACCESS

T# 79-3-25

P.D.# 79-3-16

137-76.0

SHEET 3 OF 3 SHEETS