

CORNER RECORD

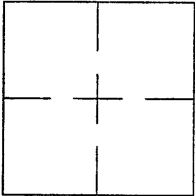
Document Number

CR 694City of SAN LORENZO

County of

ALAMEDA

, California

Brief Legal Description STREET MONUMENT. PIN IN CONC. POST. VIA DEL REY.**CORNER TYPE**Government Corner ☐Control ☐Meander ☐Property ☐Rancho ☐Other ☒Date of Survey JULY 7, 1993**COORDINATES**

(Optional)

N. _____

E. _____

Zone _____ Datum _____

Elev. _____

Corner -

Left as found ☒Found and tagged ☐Established ☐Reestablished ☐Rebuilt ☐

Identification and type of corner found: Evidence used to identify or procedure used to establish or reestablish the corner:

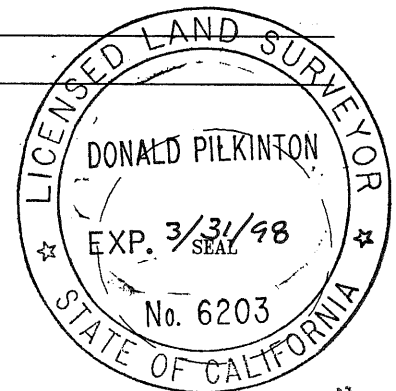
THE MONUMENTS DESCRIBED BELOW ARE REFERENCED BY A LINE. THE LINES WERE
ESTABLISHED BY CHISELED CROSSES NEAR THE BACK OF THE CONCRETE SIDEWALKS.

A description of the physical condition of the monument as found and as set or reset: A PIN IN CONCRETE POST
WAS FOUND IN GOOD CONDITION AT THE TANGENT TO CURVE MONUMENTS ON THE CENTER-
LINE OF VIA DEL REY. THE MONUMENTS ARE IN MONUMENT WELLS BUT ARE IN DANGER
OF BEING DESTROYED DUE TO STREET CONSTRUCTION.

SURVEYOR'S STATEMENT

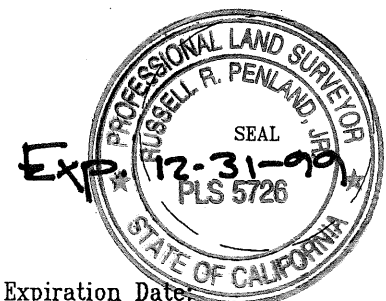
This Corner Record was prepared by me or under my direction in conformance with
 the Land Surveyors' Act on DECEMBER 20, 19 95.

Signed Donald C. Pilkinton L.S. or R.C.E. Number L.S. 6203

**COUNTY SURVEYOR'S STATEMENT**

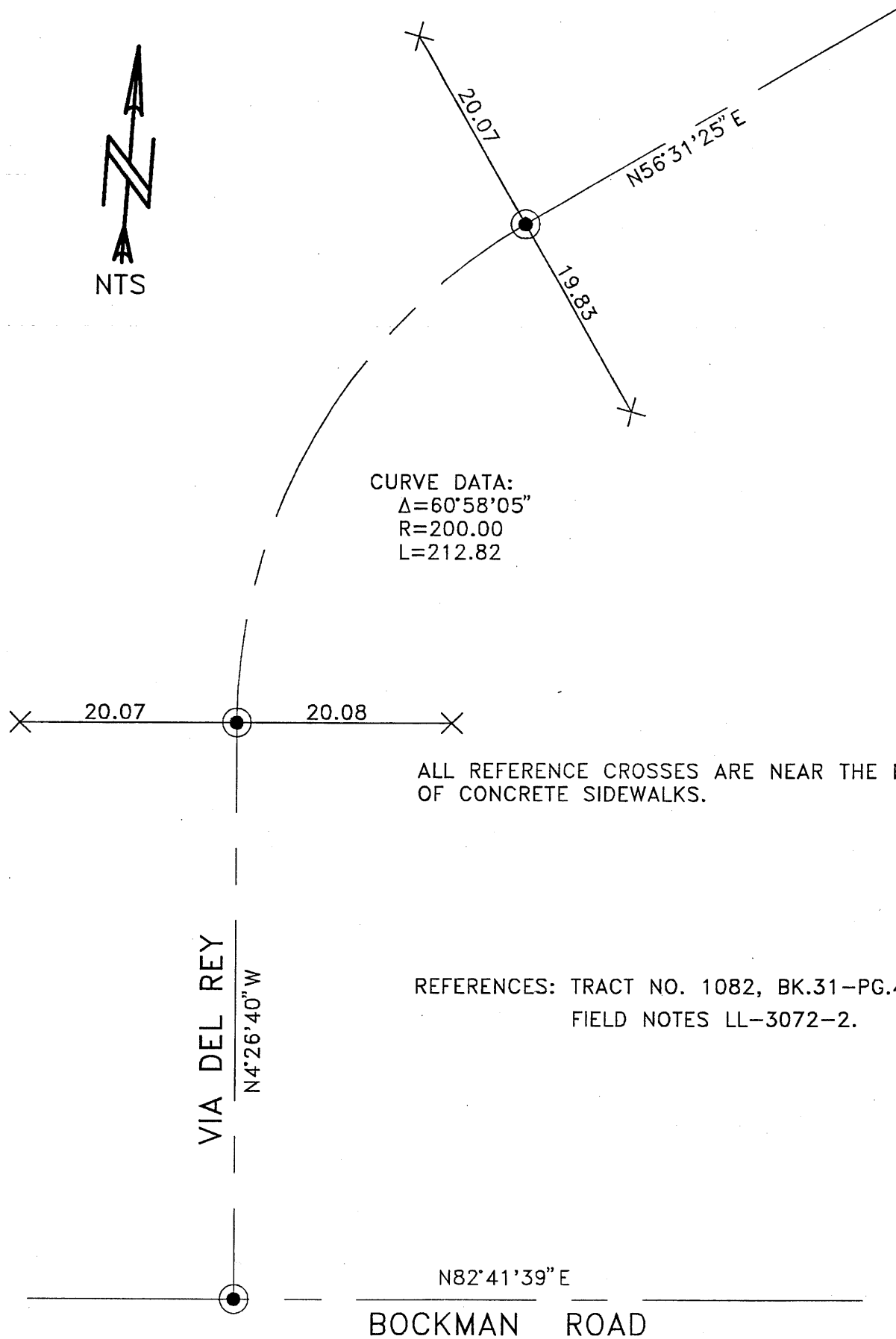
This Corner Record was received 12.21. 19 95 and examined
 and filed 3.8. 1996

Signed Russell R. Penland Title Deputy County Surveyor



Expiration Date: _____

County Surveyor's Comment _____



CURVE DATA:
 $\Delta=60^{\circ}58'05''$
 $R=200.00$
 $L=212.82$

ALL REFERENCE CROSSES ARE NEAR THE BACK
OF CONCRETE SIDEWALKS.

REFERENCES: TRACT NO. 1082, BK.31-PG.46.
FIELD NOTES LL-3072-2.

$N82^{\circ}41'39''E$

BOCKMAN ROAD