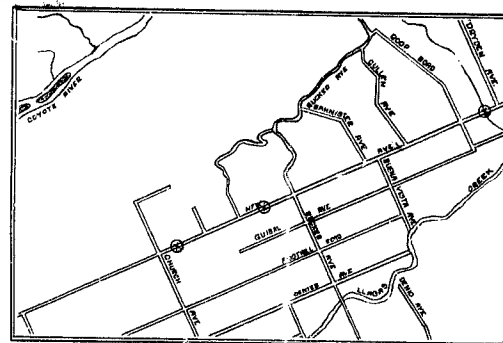


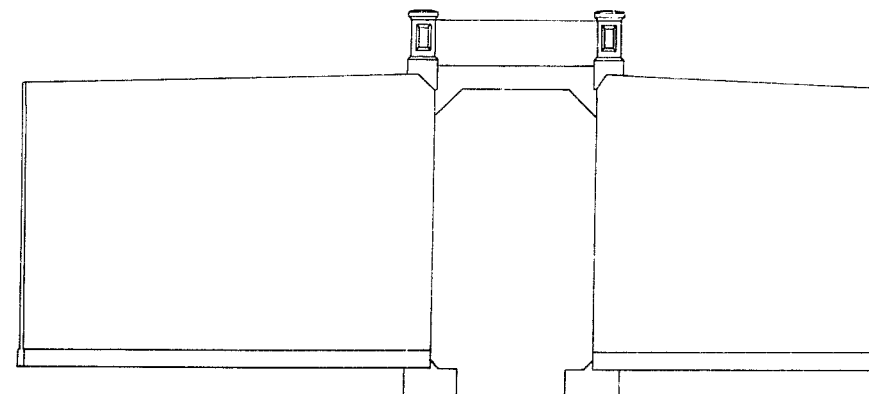
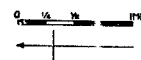
PLANS
FOR THREE
REINFORCED CONCRETE CULVERTS
ON
NEW AVENUE
IN
SUPERVISOR DISTRICT No 1

JUNE 1927

ROBERT B. CHANDLER
COUNTY SURVEYOR

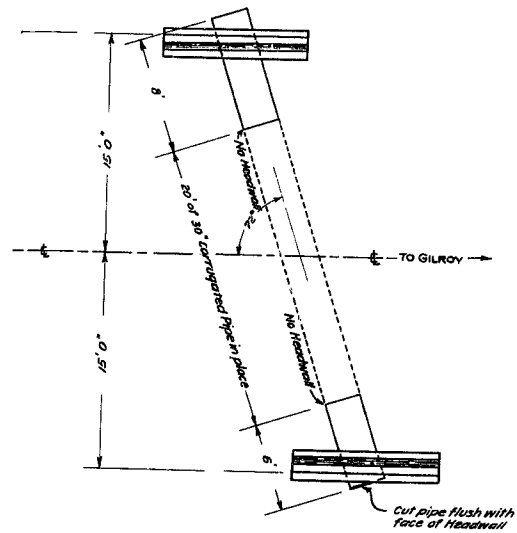


INDEX MAP

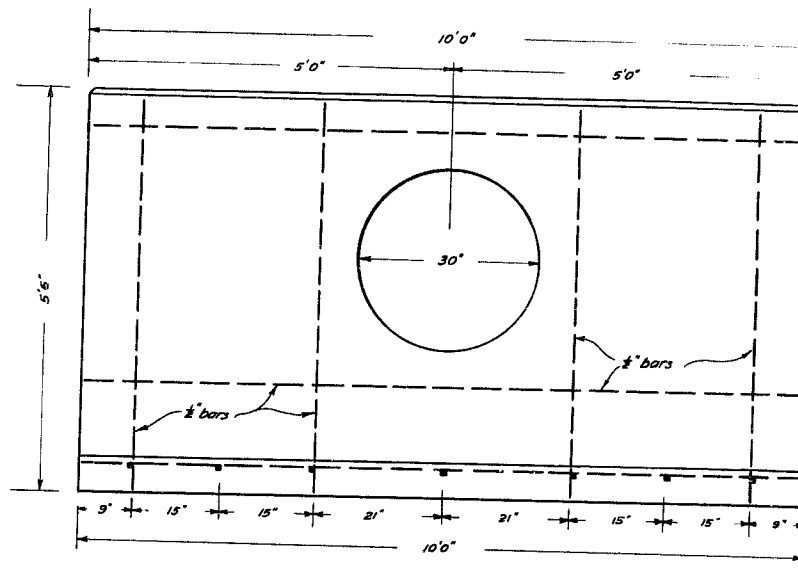


2636

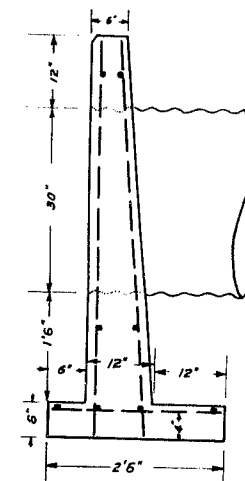
MICROFILM



LOCATION PLAN
SCALE: 1"=5'

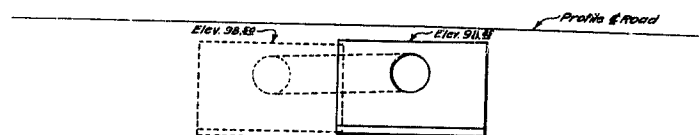


SIDE ELEV. OF HEADWALL
SCALE: 1"=1'



END ELEVATION

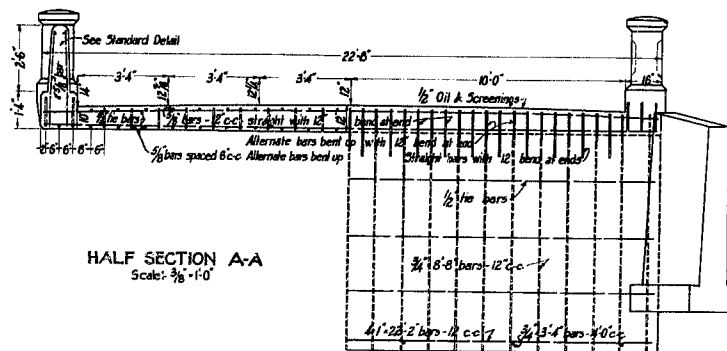
- Required:
- 2- Standard Headwalls.
 - 1 pc. 30" cor. Culvert Pipe 8 ft. Long.
 - 1 pc. 30" " " " 6 " "
 - 2- 30" " " Coupling Bands.
 - 15 pcs. 1/2" x 5' 4" Square Corrugated Bars.
 - 16 " 1/2" x 9' 9" " " "
 - 14 " 1/2" x 2' 3" " " "



END VIEW
SCALE: 1"=5'

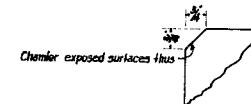
MICROFILM

FRAZIER LAKE ROAD - CULVERT NO. 5
SHEET NO. 9 OF 10 SHEETS.

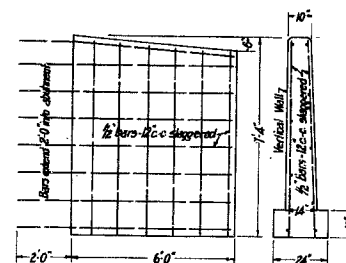


HALF SECTION A-A
Scale: 3/8" = 1'-0"

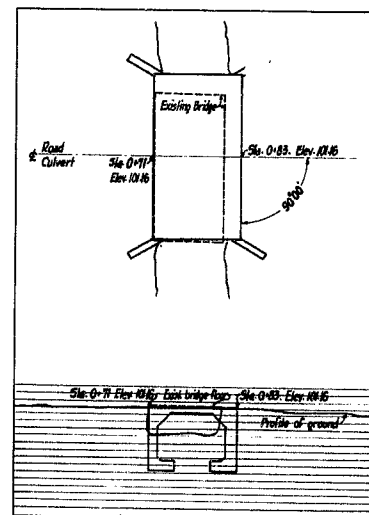
HALF END VIEW
Scale: 3/8" = 1'-0"



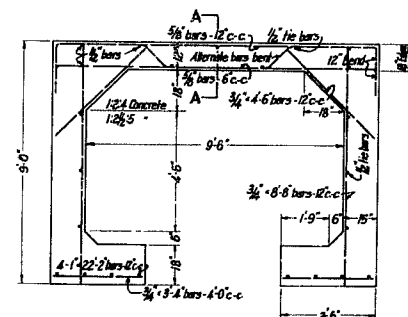
Note: All reinforcing bars are square corrugated.



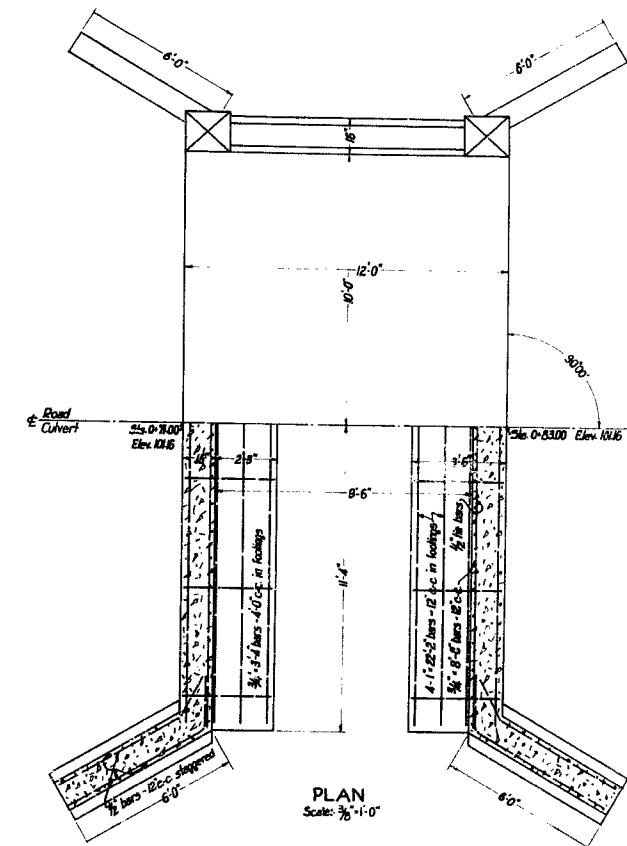
WING DETAIL
Scale: 3/8" = 1'-0"



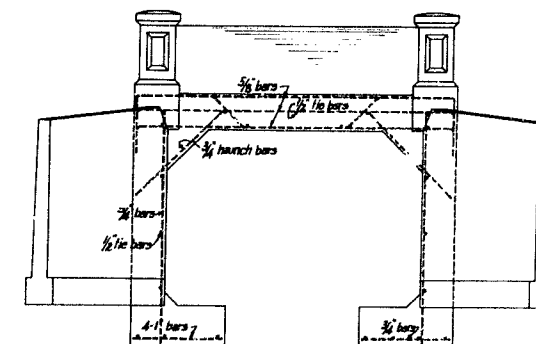
LOCATION PLAN
Scale: 1" = 10'



SECTION ON C.L.
Scale: 3/8" = 1'-0"

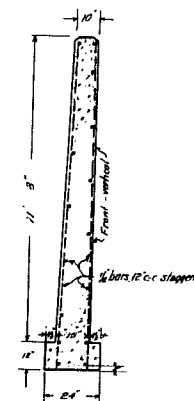
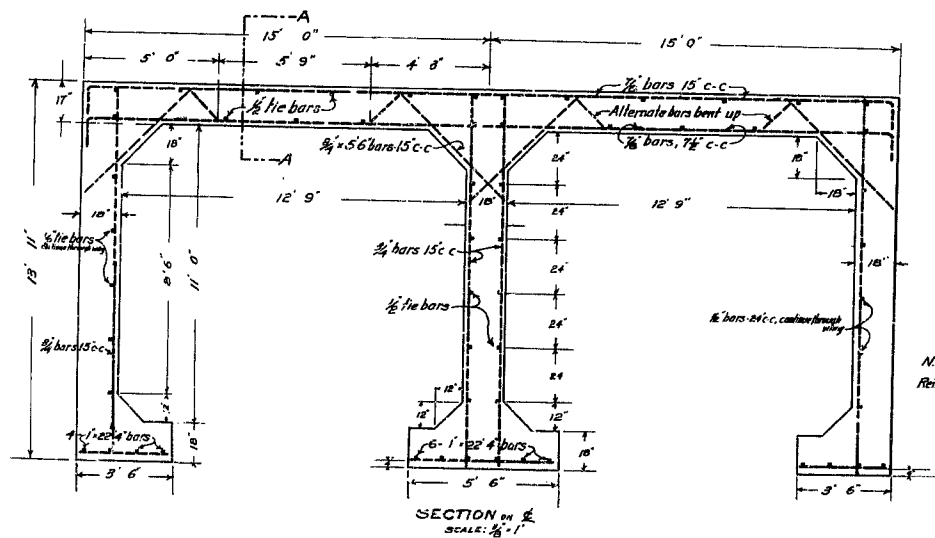
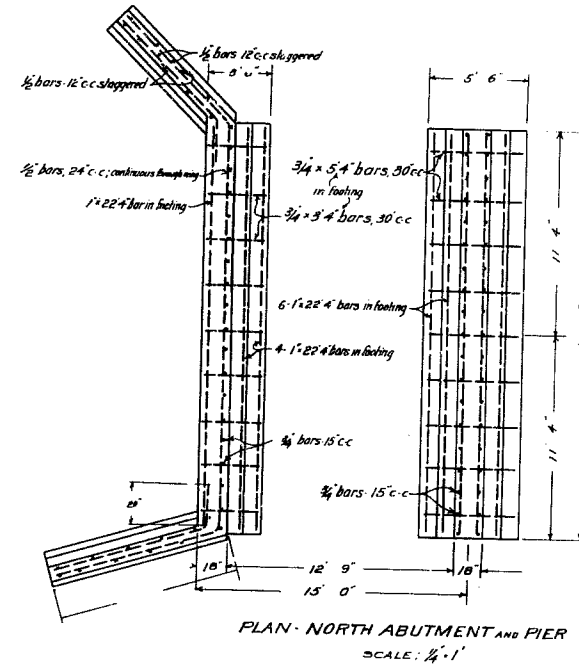
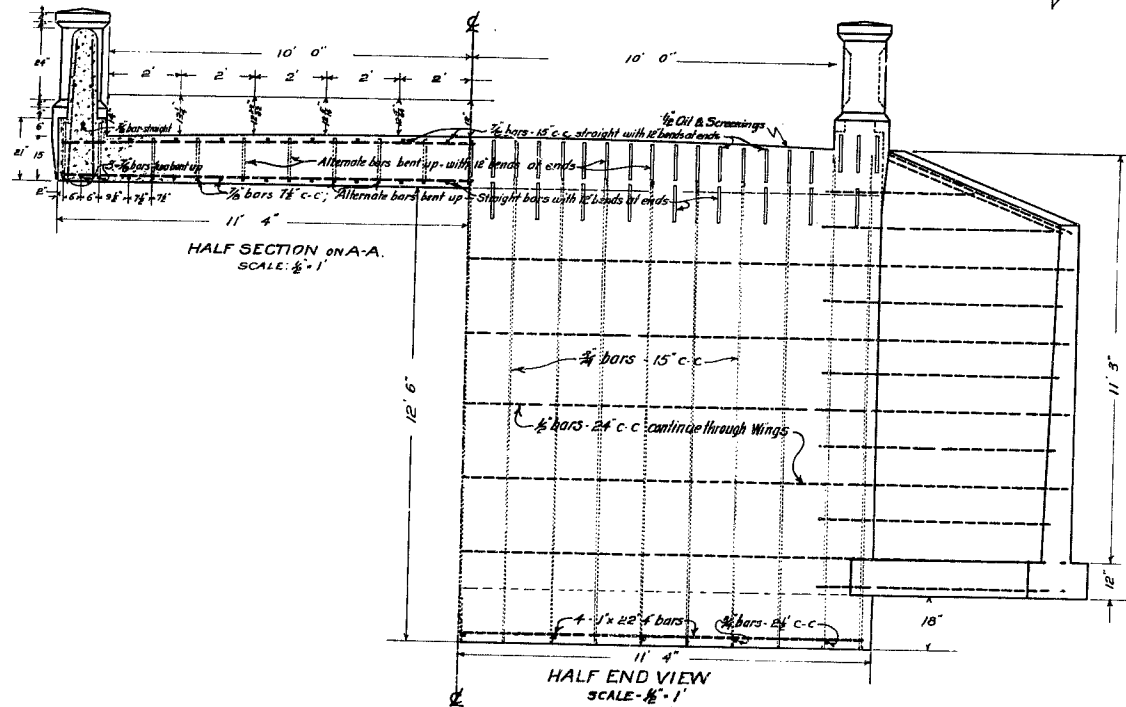


PLAN
Scale: 3/8" = 1'-0"



SIDE VIEW
Scale: 3/8" = 1'-0"

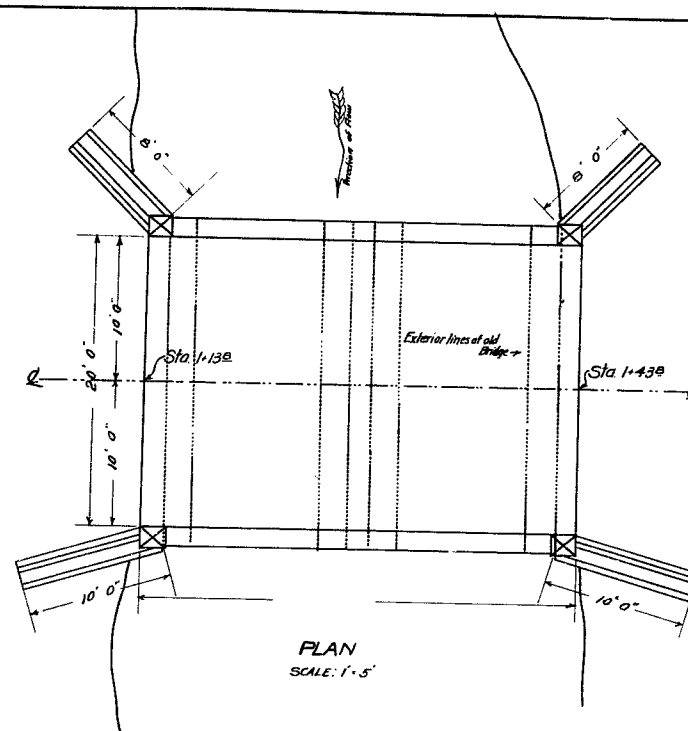
FRAZIER LAKE ROAD CULVERT No. 4
Sheet No. 8 of 10 Sheets



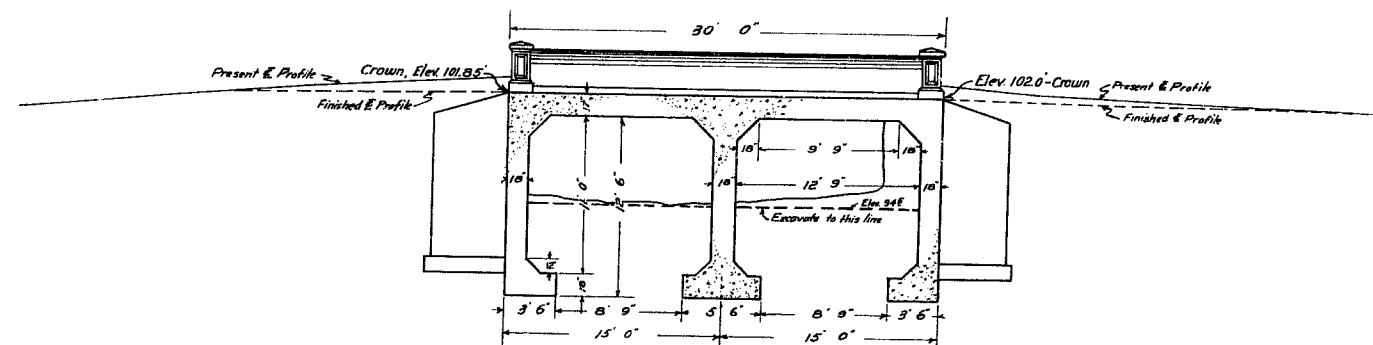
N.B. —
Reinforcing Steel — square corrugated.
Splices to lap 40 diameters.
Place one inch clear from surface
of concrete unless shown differently.

NOT TO SCALE

Frazier Lake Road
Culvert No. 3
Sheet No. 7 of 10 Sheets.

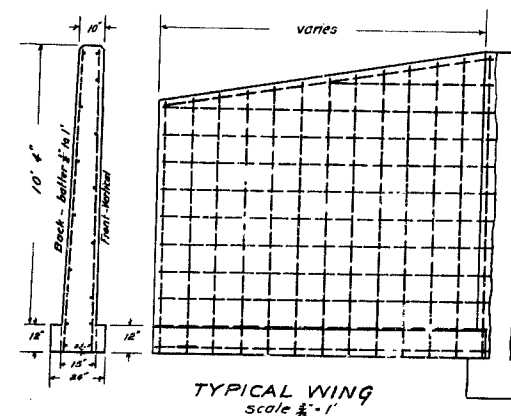
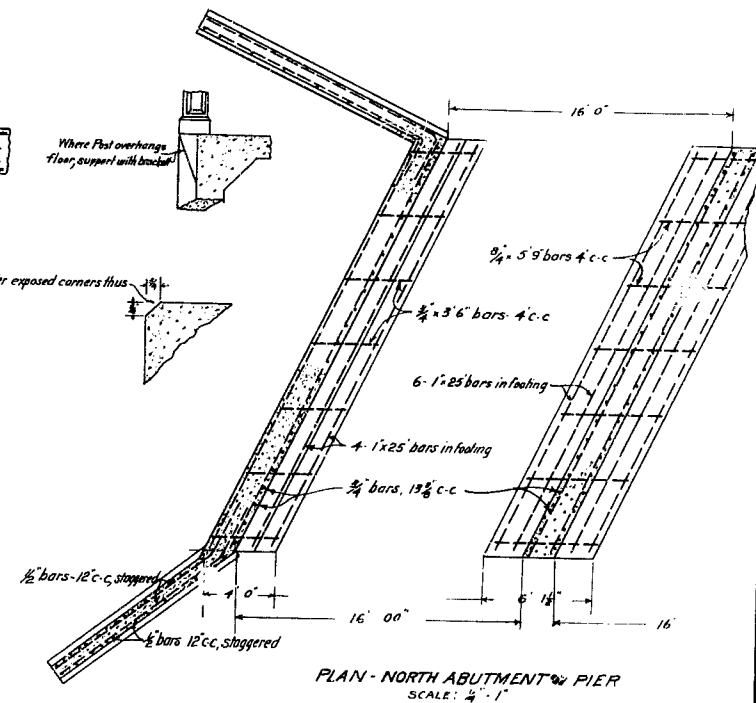
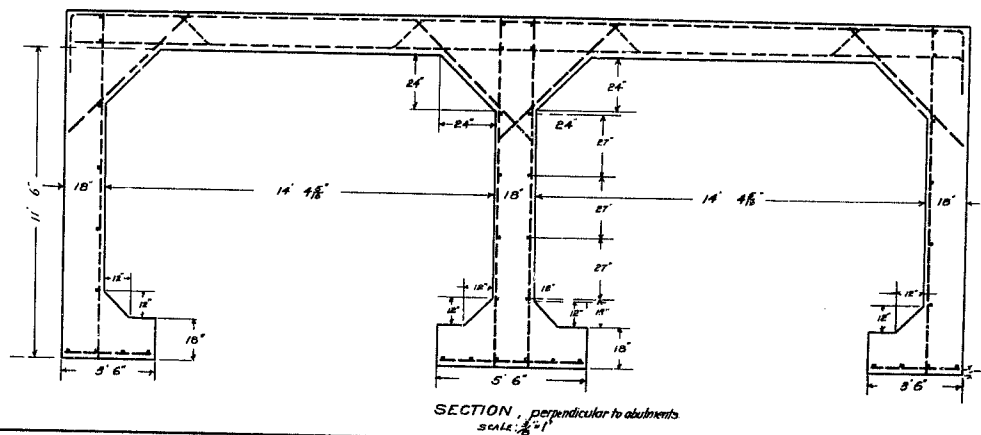
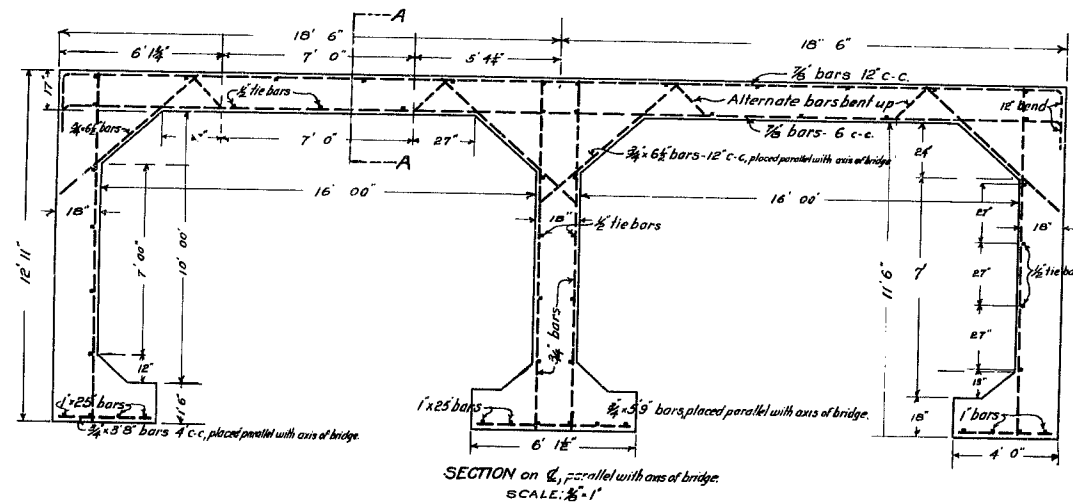
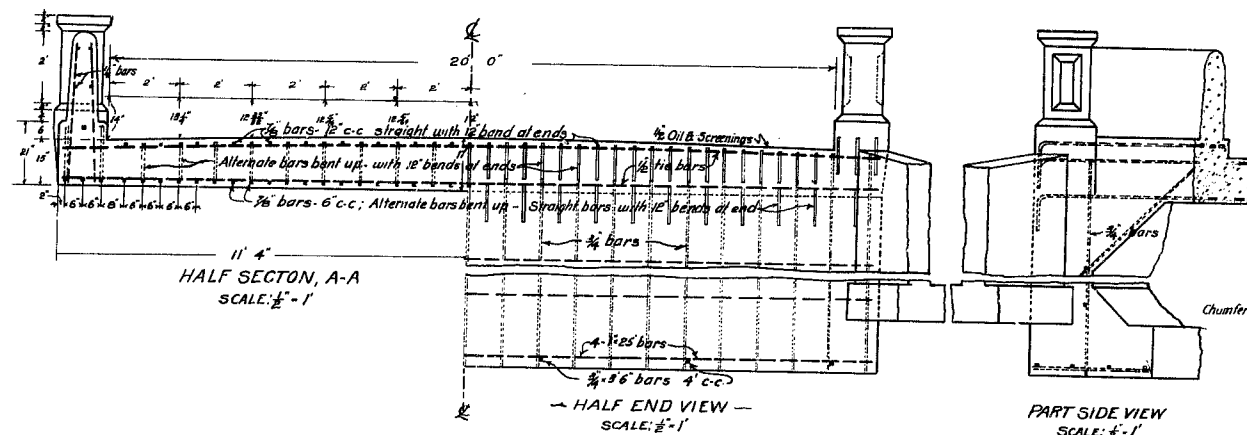


PLAN
SCALE: 1" = 5'



VERTICAL SECTION
ALONG CENTER LINE
SCALE: 1" = 5'

Frazier Lake Road.
Culvert N13
Sheet N16 of 10 Sheets



N.B. All reinforcing steel to be square corrugated bars.
All splices to lap 40 diameters.
Place steel 1" clear from surface of concrete,
unless otherwise indicated.

MICROFILM

Frazier Lake Road
Culvert No. 2
Sheet No. 5 of 10 Sheets.