

50~43to45

TRACT 2551
Book 49, Pages 52-55 OR.

TRACT 2553

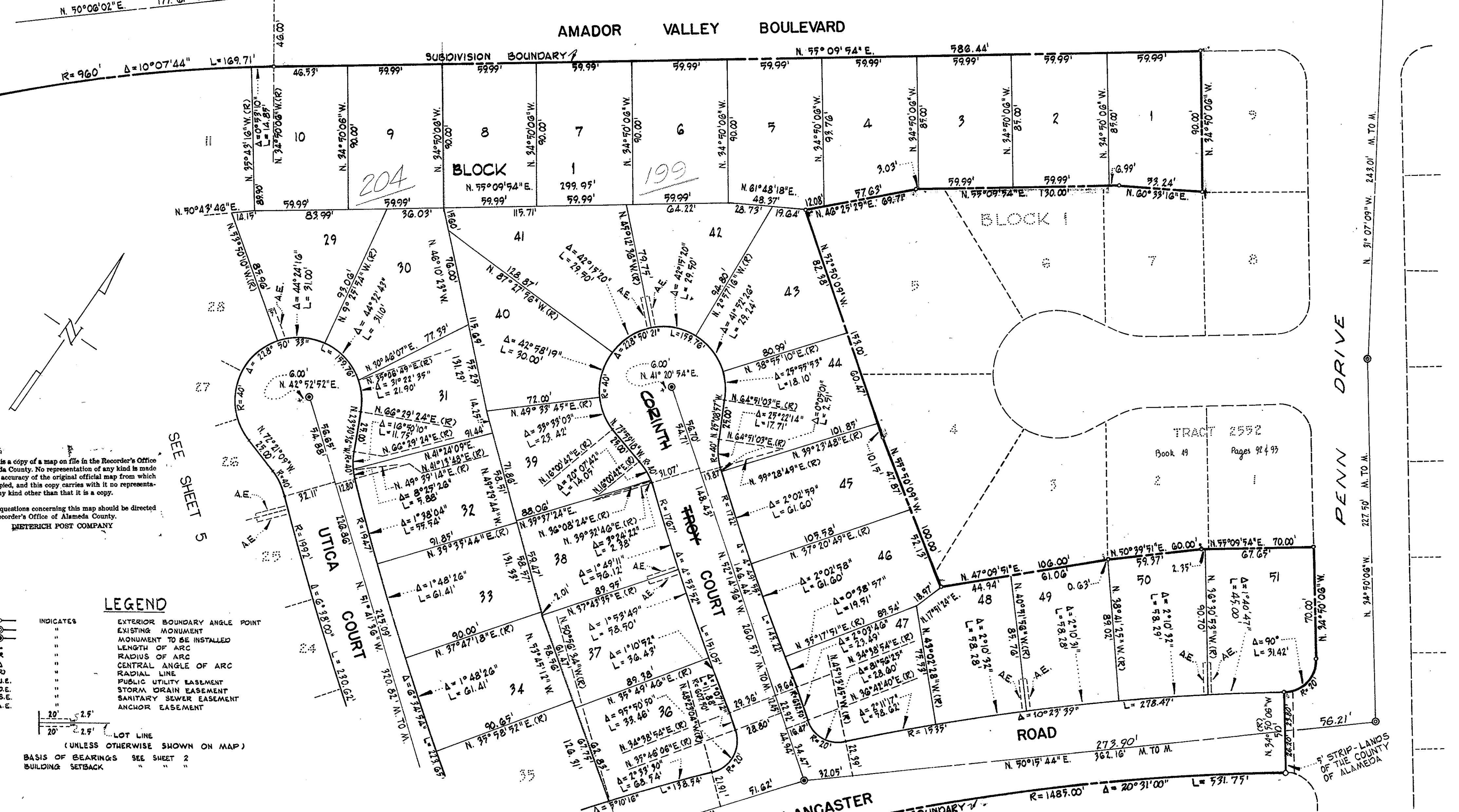
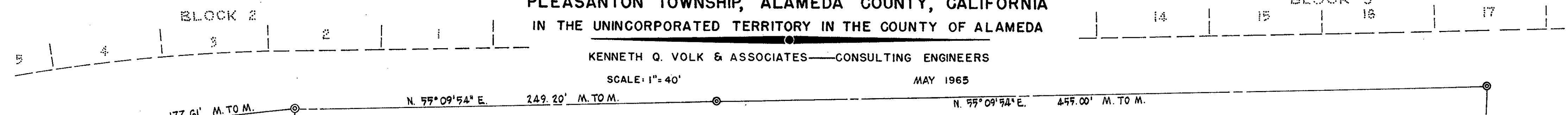
PLEASANTON TOWNSHIP, ALAMEDA COUNTY, CALIFORNIA
IN THE UNINCORPORATED TERRITORY IN THE COUNTY OF ALAMEDA

TRACT 2486
Book 48, Pages 82-84 O.R.
BLOCK 3

KENNETH Q. VOLK & ASSOCIATES—CONSULTING ENGINEERS

SCALE: 1"=40'

MAY 1965



This is a copy of a map on file in the Recorder's Office of Alameda County. No representation of any kind is made as to the accuracy of the original official map from which this is copied, and this copy carries with it no representation of any kind other than that it is a copy.

Any questions concerning this map should be directed to the Recorder's Office of Alameda County.
DIETERICH POST COMPANY

LEGEND

- INDICATES
- EXTERIOR BOUNDARY ANGLE POINT
- EXISTING MONUMENT
- MONUMENT TO BE INSTALLED
- LENGTH OF ARC
- RADIUS OF ARC
- CENTRAL ANGLE OF ARC
- RADIAL LINE
- PUBLIC UTILITY EASEMENT
- STORM DRAIN EASEMENT
- SANITARY SEWER EASEMENT
- ANCHOR EASEMENT
- LOT LINE (UNLESS OTHERWISE SHOWN ON MAP)
- BASIS OF BEARINGS SEE SHEET 2
- BUILDING SETBACK

LANCASTER

LANDS OF VOLK-MAHLIN COMMUNITIES, INC.