[illegible]

BRAND DESIGNER:

PA/PM:

JOB NO.: 22204

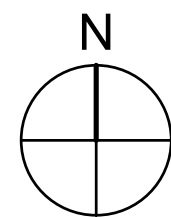
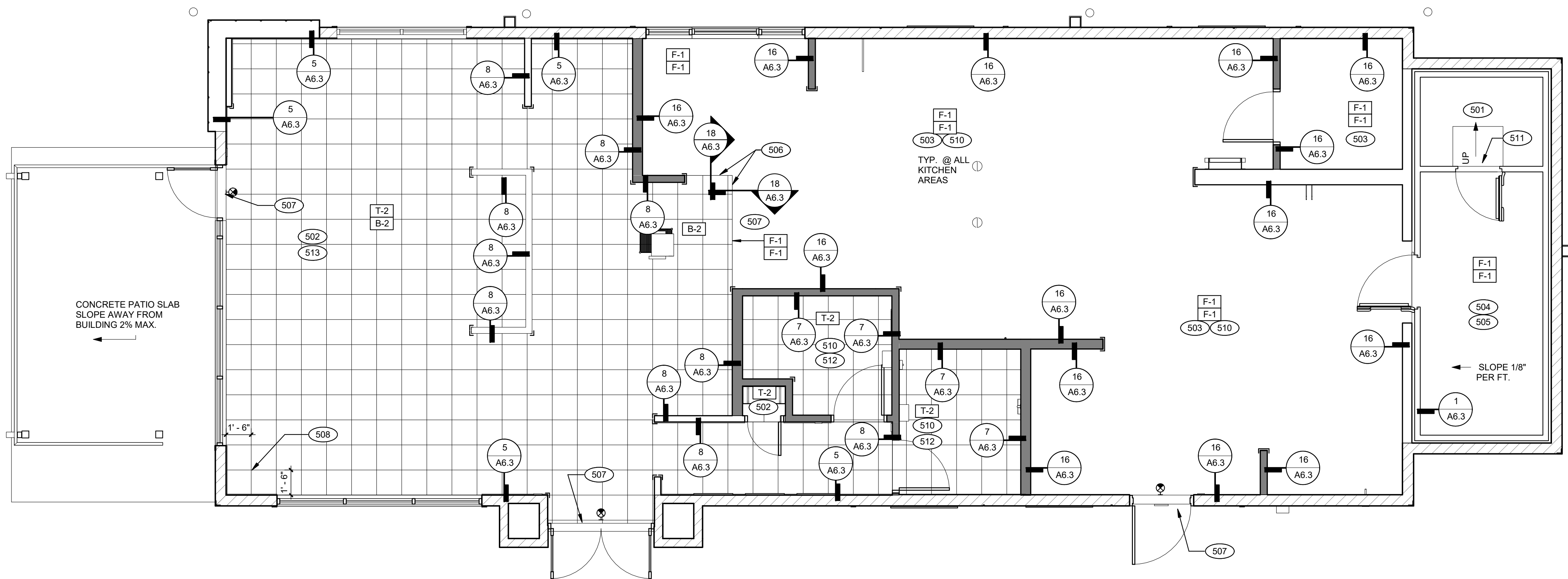
SPEARS CREEK CHURCH RD
(BY LIBERTY RIDGE DRIVE)
SOUTH CAROLINA 29229



ENDEAVOR 2.0
**FLOOR FINISH
PLAN**

A7.0

PLOT DATE: 5/18/2022 2:22:35 PM



FLOOR FINISH PLAN 1/4" = 1'-0" **1**

B. TILE JOINT (U.O.N.):

1. QUARRY FLOOR TILE: 1/4"
2. PORCELAIN FLOOR TILE: 3/16"
3. GLAZED WALL TILE: 1/8"
4. BASE, TRIM AND ACCESSORIES

C. TILE INSTALLATIONS REQUIRE MANUFACTURERS STANDARD MOLDED CORNERS AT BOTH INSIDE AND OUTSIDE CORNERS.

D. ALL BASE TILE SHALL BE SANITARY COVE STYLE WITH 3/8" MIN RADIUS UNLESS NOTED OTHERWISE.

E. SEE SCOPE OF WORK SHEETS FOR RESPONSIBILITIES.

F. PROVIDE CLEAR SILICONE CAULK WHERE FRP STOPS AT TOP OF COVE BASE.

G. TILE CHIPPING AROUND CORE DRILL HOLES FOR SEATING FIXTURE WILL NOT BE ACCEPTED

501 FACTORY FLOOR FINISH (GALV STL) W/INTEGRAL COVE BASE.
502 6" COVE TILE BASE. SEE DETAIL.
503 6" SANITARY COVE TILE BASE. SEE DETAILS.
504 PROVIDE FLOOR TILE INSIDE WALK-IN COOLER (NO TILE OR BASE IN
FREEZER). FLOOR TILE IN COOLERS TO DRAIN TO KITCHEN.
COORDINATE WITH COOLER WALL CONFIGURATION
505 NO BASE TILE BEHIND W-059 FOR WALK-IN COOLER/FREEZER.
506 ALIGN FLOOR TILE TRANSITION WITH FACE OF WALL.
507 FLOOR FLOOR TILE FOR FLUSH TRANSITION.
508 START POINT FOR FLOOR TILE.
509 METAL BASE IN COOLER; SEE SCOPE OF WORK. SEE DETAIL.
510 REFER TO STRUCTURAL DRAWINGS FOR CONCRETE FLOOR SLOPES
AROUND FLOOR DRAINS.
511 RAMP UP AT FREEZER TRESHOLD.
512 SANITARY TILE BASE IN RESTROOM.
513 FLOOR DRAIN, CLEAN OUT OR FLOOR SINK - REFER TO PLUMBING FOR
DETAILS.

NOT USED

FLOOR FINISH NOTES

KEY NOTES

B