

Silver Lake Tract

No. of Lots 29 Mapped July, 1925 & September, 1936

Water System Installed By * Permitees

Road Built By Permitees

Electrical Service Available Telephone Available

Access Paved road (Highway 158) plowed by State then short distance on gravel road which is maintained by permittees.

Lots Front On Silver Lake

Terrain In Subdivision Mostly sidehill at lake front.

Comments Sewer system installed by Permitees in 1975± at a cost of \$12,200 per lot. Most sewer bonds were financed over 15 year period at 8%.

* Water system built years ago by Permitees on Alger Creek. The system opens in mid-April and closes the 3rd week of October. Outside of those dates water is pumped from the lake.

The original cost of sewers would have to be adjusted upward for time. Construction began in mid 1975 and assumed to be completed by November 1, 1975. Inflationary costs for 2 years would average 8.5% per year less depreciation averaging 3% per year or a net increase over original costs of 11%. \$12,200 times 1.11 equals \$13,542 rounded to \$13,550.

U.S. DEPARTMENT OF AGRICULTURE
FOREST SERVICE
INYO NATIONAL FOREST
RUSH CREEK RECREATION AREA
SILVER LAKE TRACT

Section 17, T. 2 S. R. 26 E. M. D. M.

SHEET 2
CALIFORNIA

L-Uses

Transit Survey lots 5-10

By W.E. Green Oct 1925

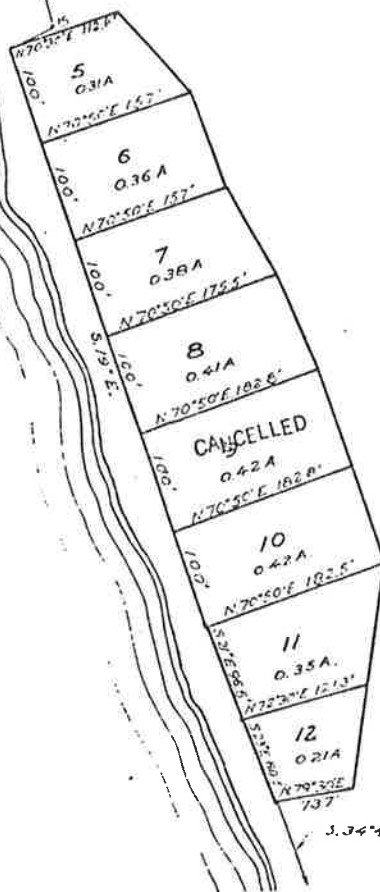
Compass Survey lots 11-12 and replat

By George Miller May 1928

Mag Decl. 17°15'E
Scale 1"=100'

NE 1/4 NE 1/4 Sec. 17

Silver Lake



3.34°45'E, 506' To NW 1/4 13

100 0 100 200 300 400 500 FEET
1 0 1 2 3 4 5 CHAINS

Tracing by: PL 10-27-28
Checked by: H.R.S. 11/2/78

CALIFORNIA
SHEET 3

Mag. Decl. $17^{\circ}SE$
Scale $1'' = 100'$



U. S. DEPARTMENT OF AGRICULTURE
FOREST SERVICE
INYO NATIONAL FOREST
RUSH CREEK RECREATION AREA
SILVER LAKE TRACT
Sec. 16-17, T. 2 S. R. 26 E. M.D.M.

CALIFORNIA
SHEET 4

L-Use-Mono
Transit Survey by Wallace E. Green
Lots 21-22 July 1925. Lots 24-25 Oct. 1925. Lots 44-45 Sept. 1936.

Mag. Decl. 17°23'E
Scale 1" = 160'

