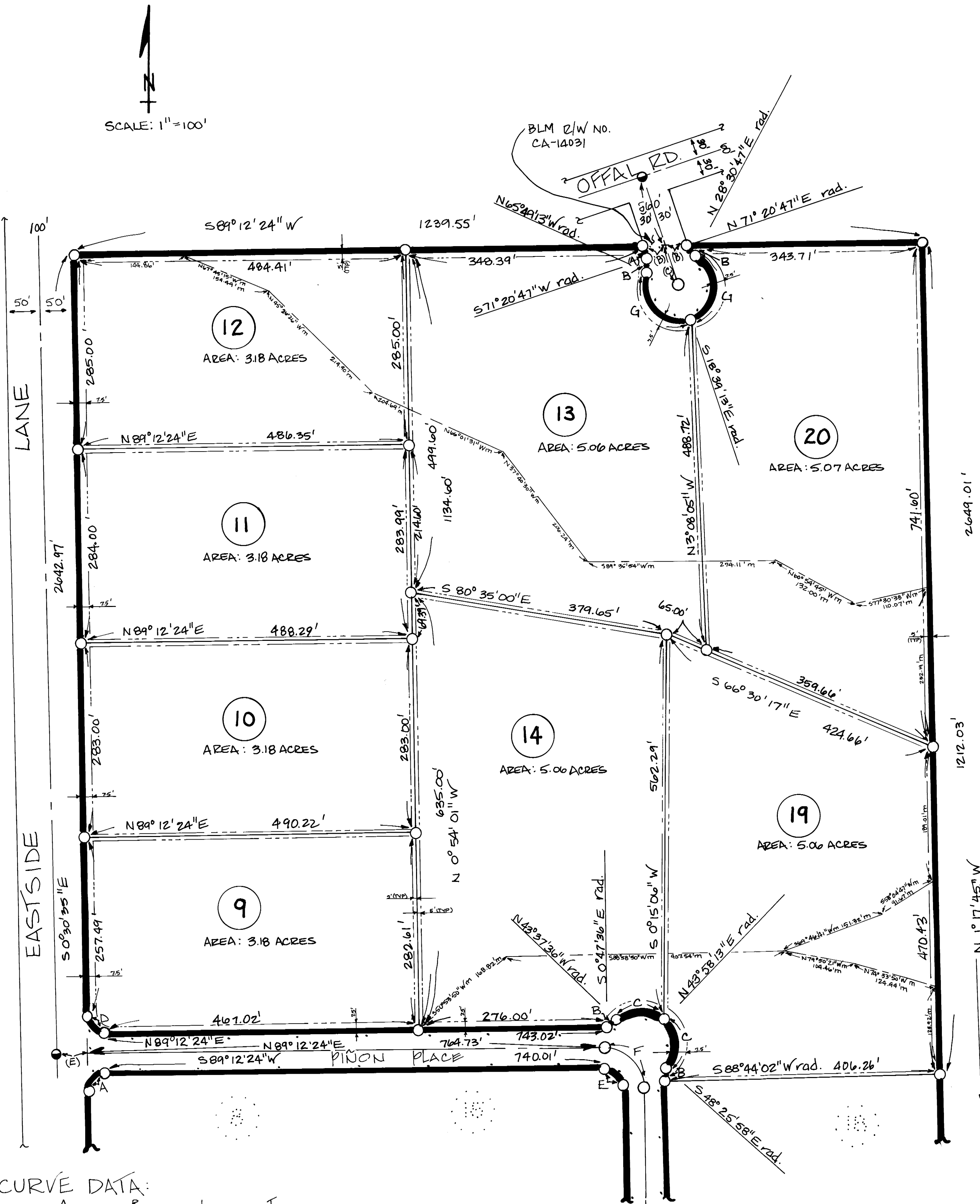


FINAL MAP NO. 31-04
A SUBDIVISION OF A PORTION OF THE
EAST 1/2 OF THE SW 1/4 OF SEC 9, T8N,
R23E, MDB&M, MONO COUNTY, CALIFORNIA.



CURVE DATA:

	A	R	L	T
A	89° 42' 59"	25.00'	39.15'	24.88'
B	42° 50' 00"	25.00'	18.69'	9.81'
C	87° 35' 49"	50.00'	76.44'	47.95'
D	90° 17' 01"	25.00'	39.39'	25.12'
E	89° 31' 38"	25.00'	39.06'	24.79'
F	89° 31' 38"	55.00'	85.94'	54.55'
G	132° 50' 00"	50.00'	115.92'	114.54'
H	42° 50' 00"	50.00'	37.38'	19.61'
I	90° 00' 00"	50.00'	78.54'	50.00'

TANGENT DATA:

(A)	N 18° 39' 13" W	19.33'
(B)	S 89° 12' 24" W	31.52'
(C)	N 18° 39' 13" W	60.66'
(D)	N 18° 39' 13" W	106.42'
(E)	N 89° 12' 24" E	50.00'

LEGEND:

- SET 1" I.D.I.P. & TAG LS 5149
- SET LEAD & TAG LS 5149 IN BOULDER
- FOUND NAIL & SHINING PAVEMENT
- RIGHT OF WAY FOR ROADWAY PURPOSES
- PUBLIC UTILITY EASEMENT. EASEMENT WIDTH IS 5' FROM LOT LINE UNLESS OTHERWISE NOTED.
- 20' WIDE DRAINAGE EASEMENT BASED ON RECORD INFORMATION. BASED ON FIELD MEASUREMENTS. US GLO BRASS CAP, UNLESS OTHERWISE NOTED AS NOTED
- SET 1 1/2" DIAMETER COPPER WELD STAMPED LS 5149.