

PARCEL MAP No. 697

5075-A

EUGENE FLYNN - REEL 1280 IMAGE 881 AW 127628
PORTION OF SEC. 24 T. 2S, R. 3E, M. D. B. & M. BEING PARCEL "A" OF RECORD OF SURVEY NO. 282
MURRAY TOWNSHIP, ALAMEDA COUNTY, CALIFORNIA

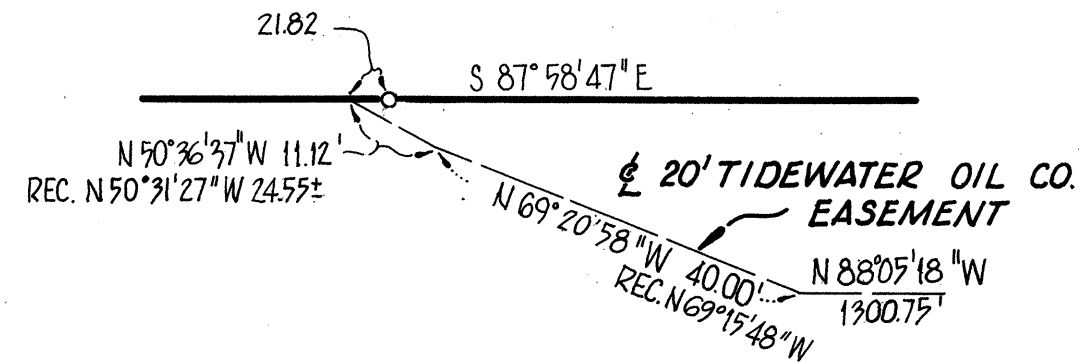


SURVEYORS - ENGINEERS
LAFAYETTE, CALIFORNIA

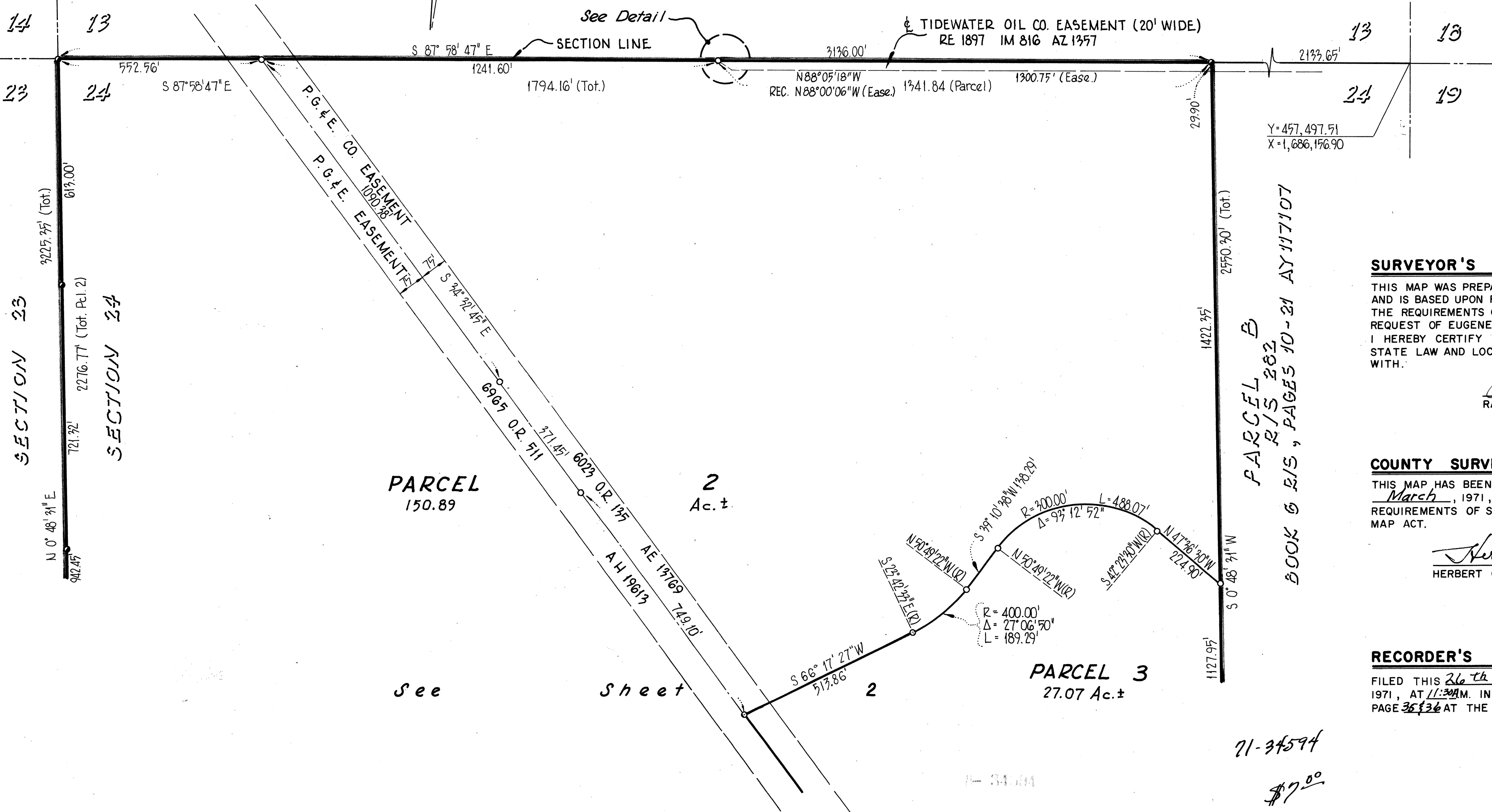
SCALE: 1" = 200' SHEET 1 OF 2 SHEETS FEBRUARY, 1971

LEGEND

- - FOUND SURV-KAP L.S. 3045
 - - SET SURV-KAP ON 5/8" RE-BAR
- COORDINATES, BEARINGS AND DISTANCES ARE BASED ON THE CALIFORNIA COORDINATE SYSTEM, ZONE III. MULTIPLY DISTANCES BY 1.0001019 TO OBTAIN GROUND LEVEL DISTANCES.
- COORDINATE CONTROL SYSTEM AS SHOWN ON R/S No. 282 IN BOOK 6 R/S PAGES 10-21 AY117107
- - FOUND C.H.C. R/W MONUMENT



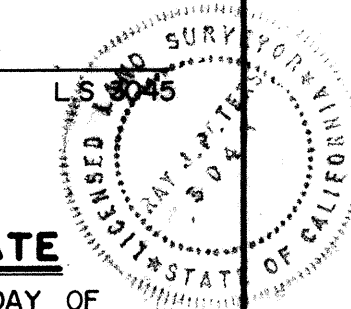
DETAIL No Scale



SURVEYOR'S CERTIFICATE

THIS MAP WAS PREPARED BY ME OR UNDER MY DIRECTION AND IS BASED UPON FIELD SURVEY IN CONFORMANCE WITH THE REQUIREMENTS OF THE SUBDIVISION MAP ACT AT THE REQUEST OF EUGENE FLYNN ON FEBRUARY, 1971. I HEREBY CERTIFY ALL PROVISIONS OF APPLICABLE STATE LAW AND LOCAL ORDINANCES HAVE BEEN COMPLIED WITH.

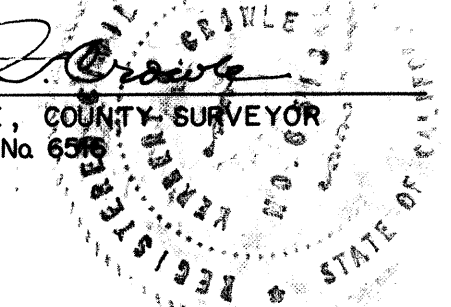
Ray J. Peters
RAY J. PETERS



COUNTY SURVEYOR'S CERTIFICATE

THIS MAP HAS BEEN EXAMINED THIS 23rd DAY OF March, 1971, FOR CONFORMANCE WITH THE REQUIREMENTS OF SECTION 11575 OF THE SUBDIVISION MAP ACT.

Herbert G. Crowle
HERBERT G. CROWLE, COUNTY SURVEYOR
R.C.E. No. 6375



RECORDER'S CERTIFICATE

FILED THIS 26th DAY OF March, 1971, AT 11:34 AM IN BOOK 69 OF PARCEL MAPS AT PAGE 35+36 AT THE REQUEST OF HERBERT G. CROWLE.

JACK G. BLUE
COUNTY RECORDER

By [Signature]
DEPUTY COUNTY RECORDER