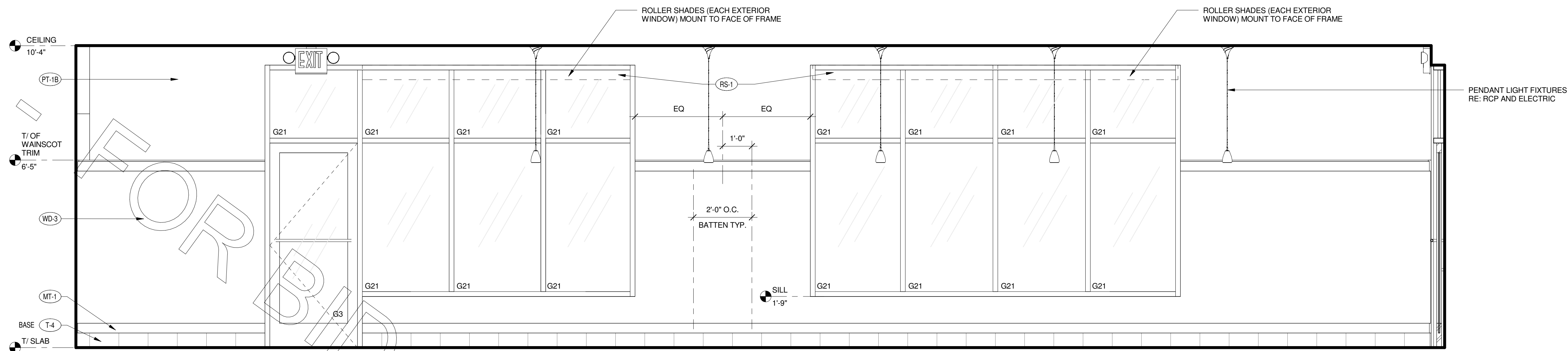
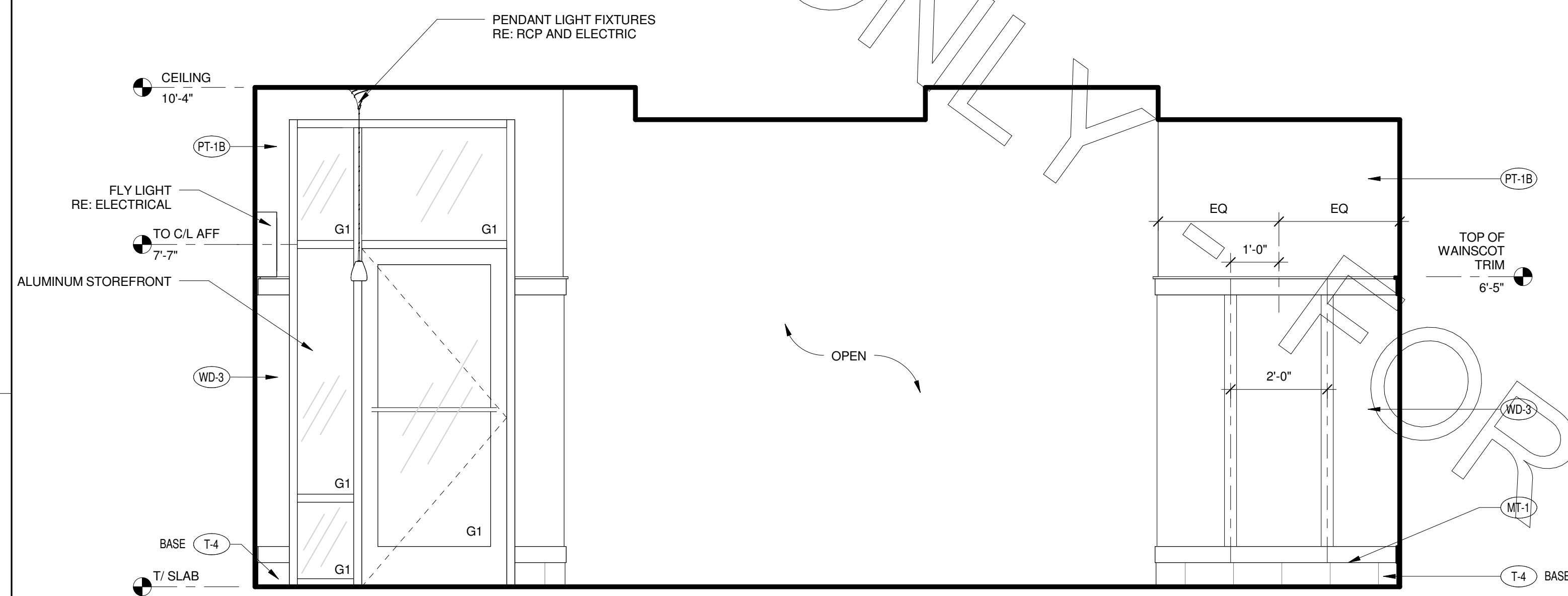


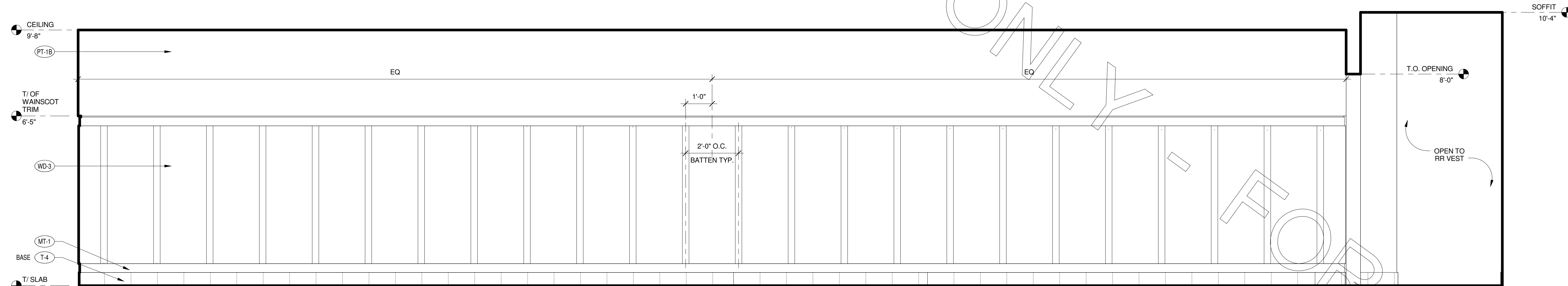
3/12/2018 10:38:52 AM



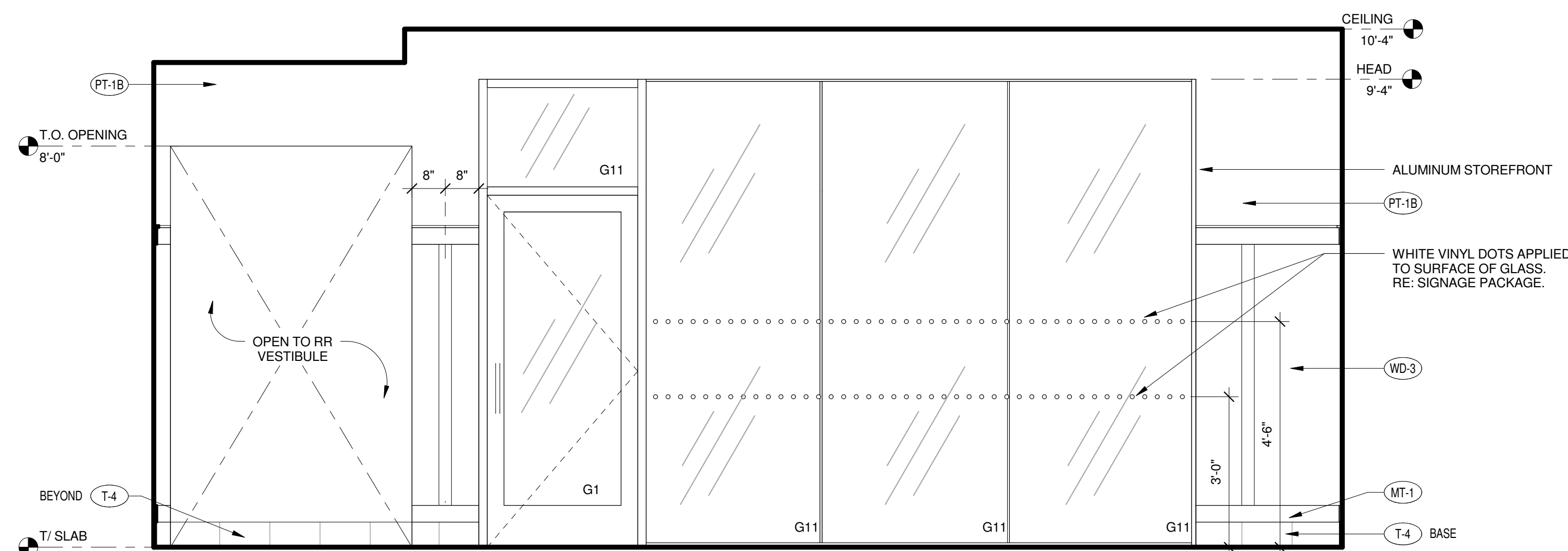
D4 INTERIOR ELEVATION - DINING  
1/2" = 1'-0"



C4 INTERIOR ELEVATION - DINING  
1/2" = 1'-0"



B4 INTERIOR ELEVATION - DINING  
1/2" = 1'-0"



A4 INTERIOR ELEVATION - DINING  
1/2" = 1'-0"

- NOTE:**
1. PROVIDE 5" HIGH CEMENTITIOUS BOARD SUBSTRATE AT BASE OF ALL WALLS IN DINING ROOM AND VESTIBULE.
  2. PROVIDE 12" HIGH CEMENTITIOUS BOARD SUBSTRATE AT BASE OF ALL WALLS IN KITCHEN.
  3. PROVIDE CEMENTITIOUS BOARD SUBSTRATE FOR THE FULL HEIGHT OF TILE AT ALL WALLS WITH WALL TILE.
  4. AT WAINSCOT LOCATIONS, PROVIDE 5" HIGH CEMENTITIOUS BOARD BEHIND TILE BASE, THEN PLYWOOD SUBSTRATE TO TOP OF WAINSCOT, THEN GYPSUM BOARD TO CEILING.

**INTERIOR ELEVATION GENERAL NOTES**

A1 REFER TO SHEET A-602 FOR WAINSCOT DETAILS.  
A2 GO TO PROVIDE BLOCKING FOR ALL WALL SHELVING. REFER TO K SHEETS FOR LOCATIONS



**Chick-fil-A**

Chick-fil-A  
5200 Buffington Road  
Atlanta, Georgia 30349-2998

**INTERPLAN**

ARCHITECTURE  
ENGINEERING  
INTERIOR DESIGN  
PROJECT MANAGEMENT

604 COURTLAND STREET  
SUITE 100  
ORLANDO, FLORIDA 32804  
PH 407.645.5008  
FX 407.629.9124

SEAL:  
THIS DOCUMENT IS NOT FOR CONSTRUCTION  
UNLESS THE ARCHITECT OR ENGINEER'S  
SIGNATURE AND SEAL APPEAR BELOW

**CHICK-FIL-A**  
Cherokee Place FSR  
115 Cherokee Place, Cartersville, GA 30121

**FSR# 00534**

**REVISION SCHEDULE**

NO.	DATE	DESCRIPTION
-----	------	-------------

CONSULTANT PROJECT # 2017.0149  
PRINTED FOR Bid  
DATE November 20, 2017  
DRAWN BY AD

Information contained on this drawing and in all digital files produced for above named project may not be reproduced in any manner without express written or verbal consent from authorized project representatives.

SHEET INTERIOR ELEVATIONS

SHEET NUMBER  
**A-602L**