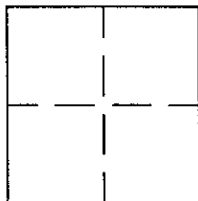


CORNER RECORD

Bk 34 Pg 37

APN No. 426 - 120 - - - - - (Optional) Document Number CR-2855
 Unincorporated Castro Valley County of ALAMEDA, California
 Brief Legal Description A Railroad Spike on Centerline of East Avenue at the intersection of the prolongation of the Westerly Tract Line of Tract 7043



CORNER TYPE

COORDINATES (Optional)

Government Corner ☐ Control ☐
 Meander ☐ Property ☐
 Rancho ☐ Other ☒
 Date of Survey OCTOBER 23rd, 2006

N. _____
 E. _____
 Zone _____ Datum _____
 Elev. _____

Corner - Left as found ☒ Found and tagged ☐ Established ☐ Reestablished ☐ Rebuilt ☒

In compliance with Section 8771 of the Professional Land Surveyors' Act, this corner record is being filed to ESTABLISH X / REESTABLISH _____ the position of an existing monument PRIOR X / SUBSEQUENT _____ to street or highway reconstruction. (Use this portion only when applicable.)

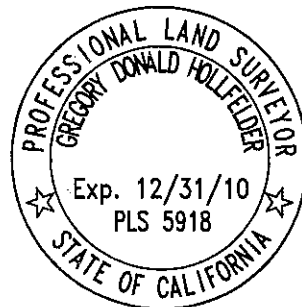
Identification and type of corner found: Evidence used to identify or procedure used to establish or reestablish the corner:
THE INTERSECTION OF THE 2 LINES DEFINED BY THE 3 MAG NAILS AND 1 CHISELED "X"
SET TO REFERENCE THE FOUND RAILROAD SPIKE.

A description of the physical condition of the monument as found and as set or reset: A Railroad Spike
was found and referenced as shown on drawing on back.

SURVEYOR'S STATEMENT

This Corner Record was prepared by me or under my direction in conformance with the Land Surveyors' Act on OCTOBER 23rd, 20 06.

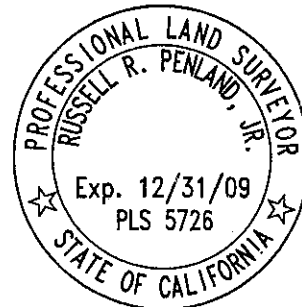
Signed Gregory Donald Hollfelder L.S. or R.C.E. Number 5918



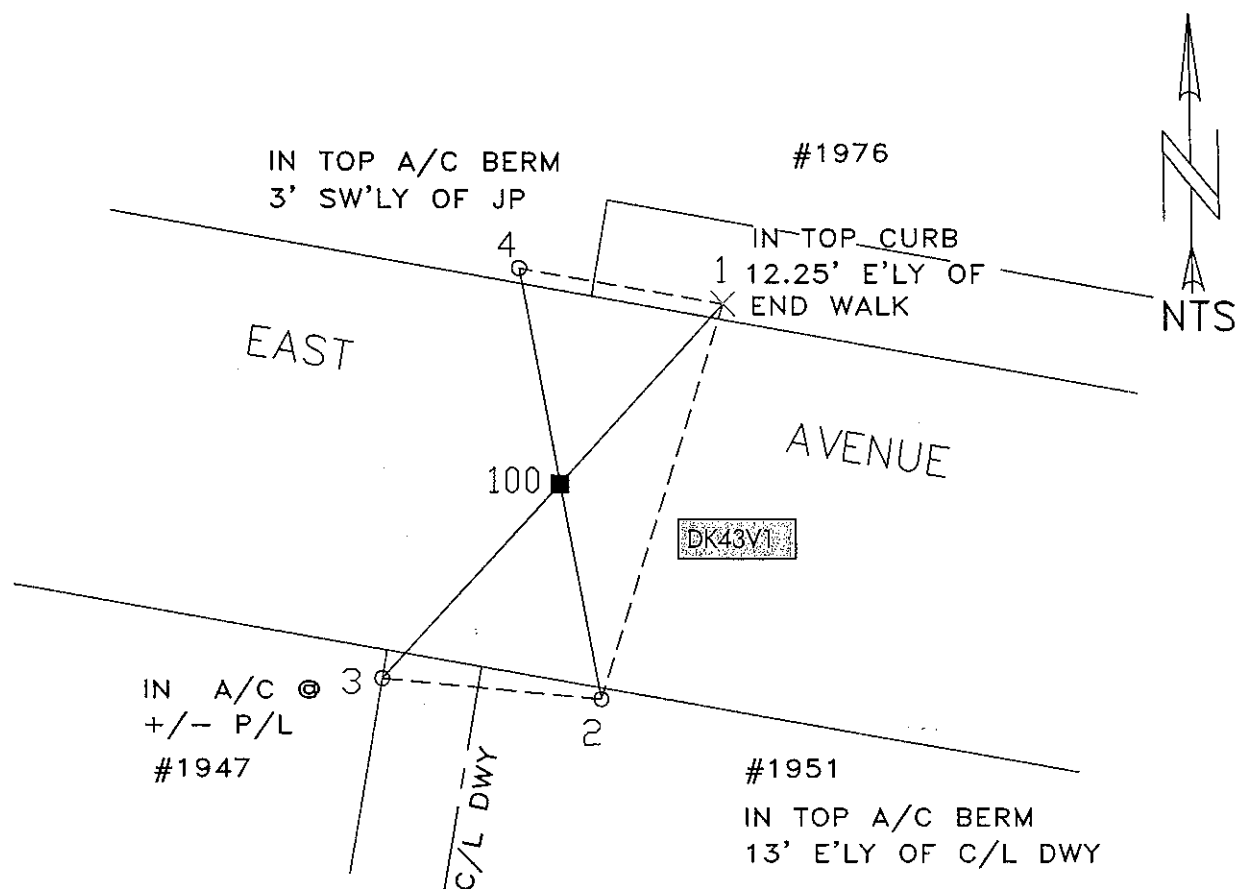
COUNTY SURVEYOR'S STATEMENT

This Corner Record was received 10-25 20 06 and examined and filed 8-30 20 09.

Signed Richard H. Penland, Jr. Title County Surveyor



County Surveyor's Comment _____



At	From	To	Angle
2	4	1	28-21-27
2	1	3	257-42-36
1	3	2	334-45-08
1	2	4	82-01-23
100	2	4	180-00-00
100	1	3	180-00-00

From	To	Distance
1	100	25.26
1	3	52.74
2	100	22.68
2	4	45.22
2	1	42.80
2	3	23.02
1	4	21.69

LEGEND

- SET MAG NAIL
- FOUND RR SPIKE
- ✕ SET CHISELED "X"

AA#A# ALAMEDA CO.
MONUMENT ID
SYSTEM (PTA...)
TYPICAL.

REFERENCE(S)

TR 7043 BK 248 PG 45-47