

OUTSIDE CORNER DETAIL

Scale= 3" = 1'-0"

SERVICE COUNTER ISOMETRIC

Scale= 3/4" = 1'-0"

TILE SCHEDULE

INSTALLED AND FURNISHED BY G.C. UNLESS NOTED OTHERWISE

01-11-19

NO.	MANUFACTURER	DESCRIPTION	COLOR	FINISH	JOINT	GROUT	REMARK
T-108	CMC AGGREGATE DOUG SALATINO 518-713-5371	12" X 24" X 3/8"	-	-	1/8"	G-111	RESTROOM WALL
T-109	DALTILE	6" X 36" X 3/8" 9" X 36" X 3/8"	FOREST PARK TIMBERLAND FP97	-	1/8"	G-113	RR VESTIBULE & DINING ROOM WALLS CONTACT: NATIONAL ACCOUNT SUPPORT DESK 877.556.5728 (national.accounts@daltile.com)
T-200	CMC DOUG SALATINO 518-713-5371	24" X 24"	BRAVADA GREIGE	MATTE	1/8"	G-96	DINING & RESTROOM FLOOR
T-300	EMSER - ECHO	3" HEXAGON	CALACATTA	MATTE	1/8"	G-114	BEVERAGE COUNTER BACKSPLASH AND SERVICE COUNTER
S1	SILIKAL	QUARTZ BLEND #4	-	PLAIN	-	-	KITCHEN, SERVICE FLOOR CONTACT: MARK FELDMAN 770-830-1404 (mfeldman@silikalamerica.com) JOHN COTHMAN 688-830-1404 (jcothman@silikalamerica.com)
S2	SILIKAL	QUARTZ BLEND #4	-	ABRASIVE	-	-	(2) 2' X 6' PIECES FOR A 4' X 6' OVERALL MAT SIZE IN VESTIBULE @ VESTIBULE STORES
M100	MATSINC 800.628.7462	NUWAY - 7/16" ALUM FOOT GRILLE	CHARCOAL	-	-	-	
GROUT	MANUFACTURER	DESCRIPTION	MFG.	COLOR	FINISH	REMARK	
G-96	MAPEI 800.42.MAPEI WWW.MAPEI.COM	LATEX MODIFIED GROUT	11	SAHARA BEIGE	POLY BLEND 1/8" NON-SANDED	DINING & RESTROOM FLOOR APPLY GROUT SEALER	
G-111	MAPEI 800.42.MAPEI WWW.MAPEI.COM	LATEX MODIFIED GROUT	19	PEARL GREY	POLY BLEND 1/8" NON-SANDED	RESTROOM, DINING APPLY GROUT SEALER	
G-113	MAPEI 800.42.MAPEI WWW.MAPEI.COM	LATEX MODIFIED GROUT	07	CHOCOLATE	POLY BLEND 1/8" NON-SANDED	APPLY GROUT SEALER	
G-114	MAPEI 800.42.MAPEI WWW.MAPEI.COM	LATEX MODIFIED GROUT	19	PEARL GREY	POLY BLEND 1/8" NON-SANDED	BEVERAGE COUNTER BACKSPLASH APPLY GROUT SEALER	

* REFER A-200 EXTERIOR FINISH SCHEDULE FOR EXTERIOR DECORATIVE TILE

* SCHLUTER SYSTEM ALUMINUM TRIM:

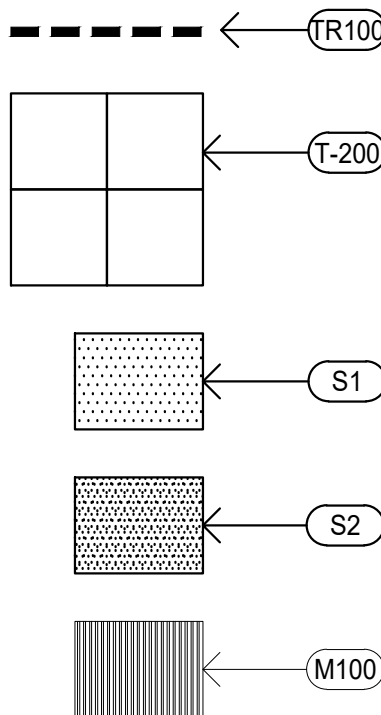
COVE TILE TRIM: INSTALLED AT RESTROOM, SERVICE COUNTER, AND DRINK STATION
SCHLUTER SYSTEMS DILEX-AHK 1S 125 ATGB (BRUSHED NICKEL ANODIZED ALUMINUM)
-OUTSIDE CORNER CONNECTOR PIECE: DILEX-AHK-E90/AHK 1S 125 ATGB (BRUSHED NICKEL ANODIZED ALUMINUM)
-INSIDE CORNER CONNECTOR PIECE: DILEX-AHK-I90/AHK 1S 125 ATGB (BRUSHED NICKEL ANODIZED ALUMINUM)
-END CAP PIECE: DILEX-AHK-E/AHK 1S 125 ATGB (BRUSHED NICKEL ANODIZED ALUMINUM)

EDGE TILE TRIM:

SCHLUTER SYSTEMS RONDEC-RO125 ATGB (BRUSHED NICKEL ANODIZED ALUMINUM)
-OUTSIDE CORNER CONNECTOR PIECE: RONDEC-EVRO125 ATGB (BRUSHED NICKEL ANODIZED ALUMINUM)
-INSIDE CORNER CONNECTOR PIECE: RONDEC-I2L/RO125 ATGB (BRUSHED NICKEL ANODIZED ALUMINUM)
SCHLUTER SYSTEMS RONDEC-RO80 ATGB (BRUSHED NICKEL ANODIZED ALUMINUM)
-OUTSIDE CORNER CONNECTOR PIECE: RONDEC-EVRO180 ATGB (BRUSHED NICKEL ANODIZED ALUMINUM)
-INSIDE CORNER CONNECTOR PIECE: RONDEC-I2L/RO80 ATGB (BRUSHED NICKEL ANODIZED ALUMINUM)
SCHLUTER SYSTEMS JOLLY-A 80 ATGB (BRUSHED NICKEL ANODIZED ALUMINUM)
-OUTSIDE EDGE PROTECTION PIECE

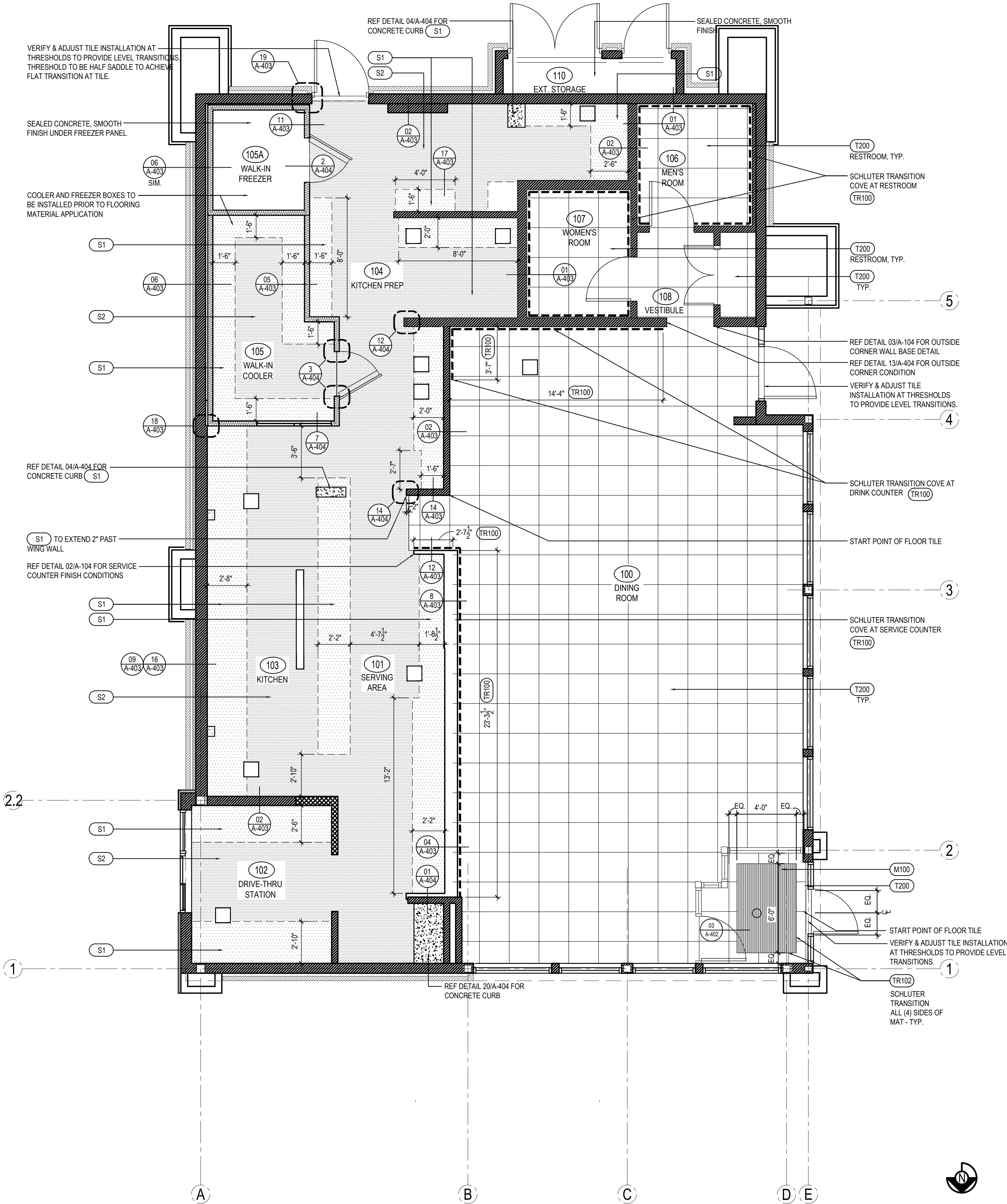
* EPOXY GROUT BY MAPEI, KERAPOXY IEG, 100% SOLIDS INDUSTRIAL GRADE: AREAS UNDER HOOD AND 36" IN FRONT OF COOKING LINE, 3 COMPARTMENT SINK AND MOP SINK AREA
SEE MANUFACTURER'S SPECIFICATION, DETAILS AND GUIDE FOR PREPARATION, MIXING, GROUTING AND CLEANING INSTRUCTION
NOTE: SEE INTERIOR SHEETS FOR WALL/ BASE TILE LOCATIONS AND SPECIFICATIONS

FLOOR TILE TRANSITION TRIM: INSTALLED IN VESTIBULE
SCHLUTER SYSTEMS SCHIENE-RAE125 (SATIN ANODIZED ALUMINUM)



FINISH SCHEDULE

Scale= NTS



FINISH PLAN

Scale= 1/4" = 1'-0"



PANDA EXPRESS, INC.
1683 Walnut Grove Ave.
Rosemead, California
91770
Telephone: 626.799.9898
Facsimile: 626.372.8288

All ideas, designs, arrangement and plans indicated or represented by this drawing are the property of Panda Express Inc. and were created for use on this specific project. None of these ideas, designs, arrangements or plans may be used by or disclosed to any person, firm, or corporation without the written permission of Panda Express Inc.

REVISIONS:

ISSUE DATE:

STATE PERMIT 06.07.21

DRAWN BY: CSW

PANDA PROJECT #: D8060

ARCH PROJECT #: JCDT20-0240



NORR
ARCHITECTS PLANNERS

PANDA EXPRESS

TRUE WARM & WELCOME
390 W Spring Mill Pointe Dr.
Westfield, IN 46074

A-104

FINISH PLAN AND SCHEDULE

TRUE WARM & WELCOME 2300 R5